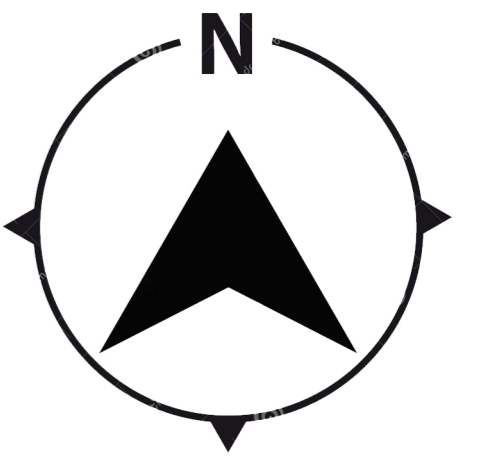
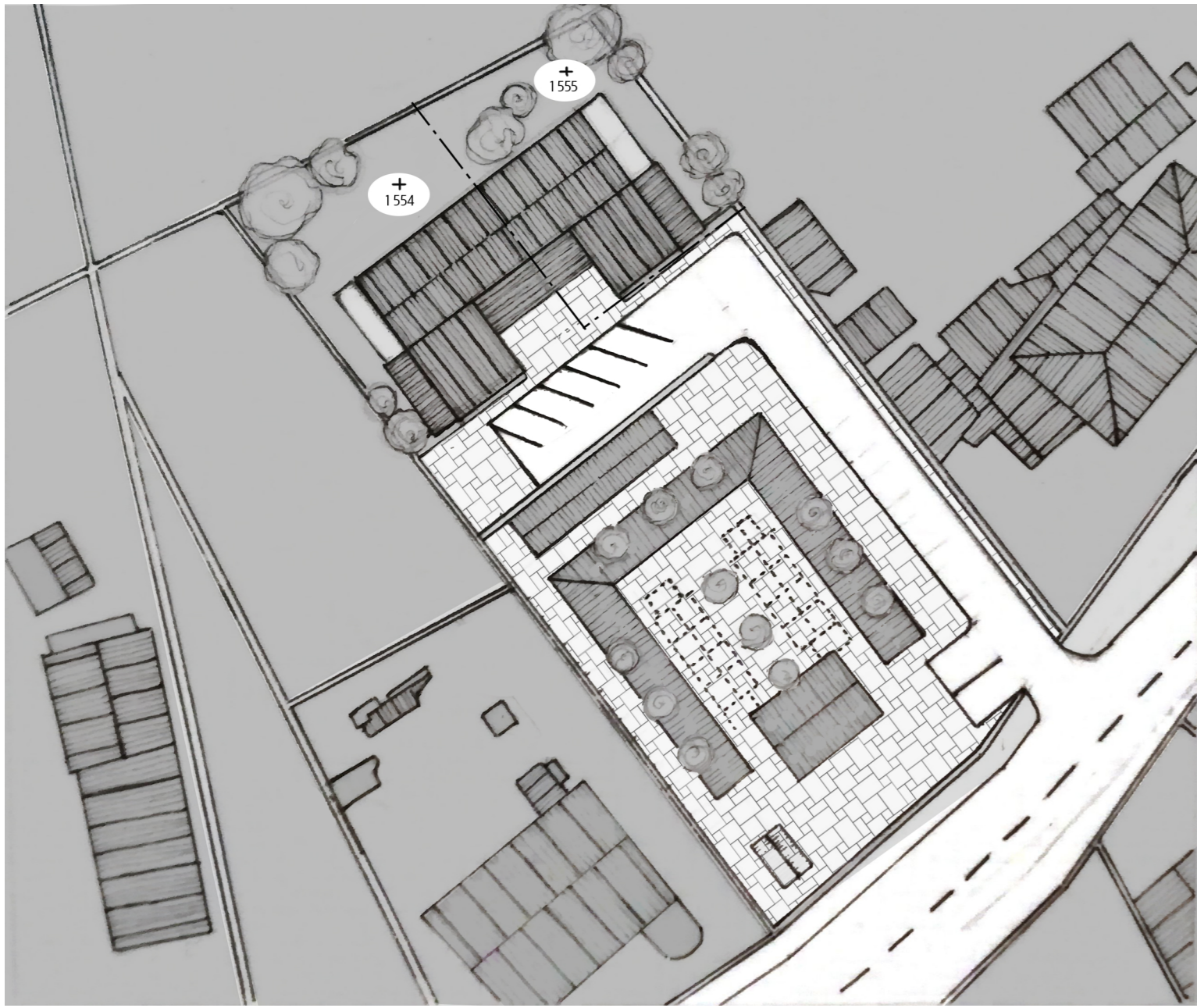


HABITER LE TERRITOIRE - Resenser le Centre-Bourg





LE PROGRAMME



PLAN DE MASSE 1.500

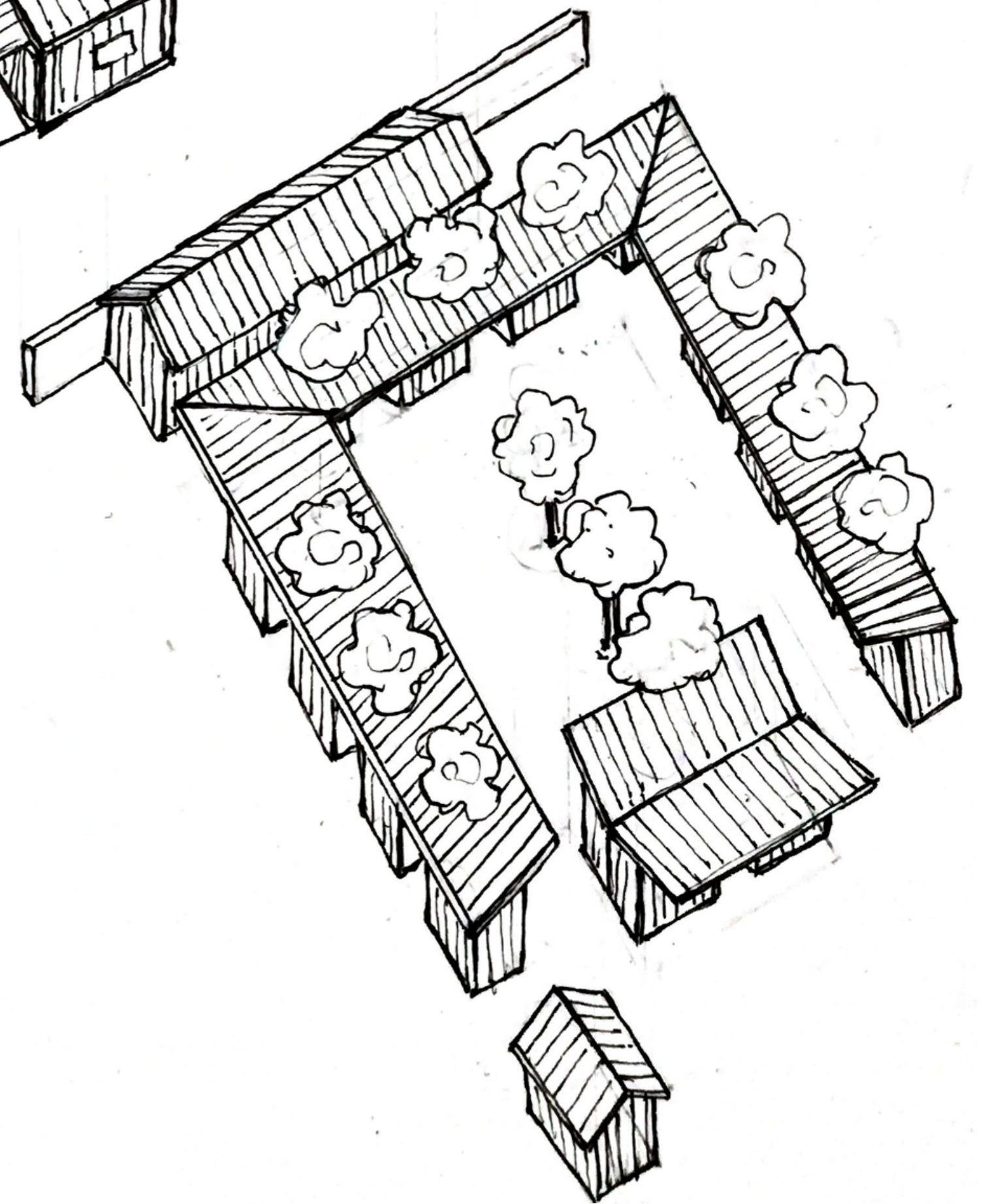
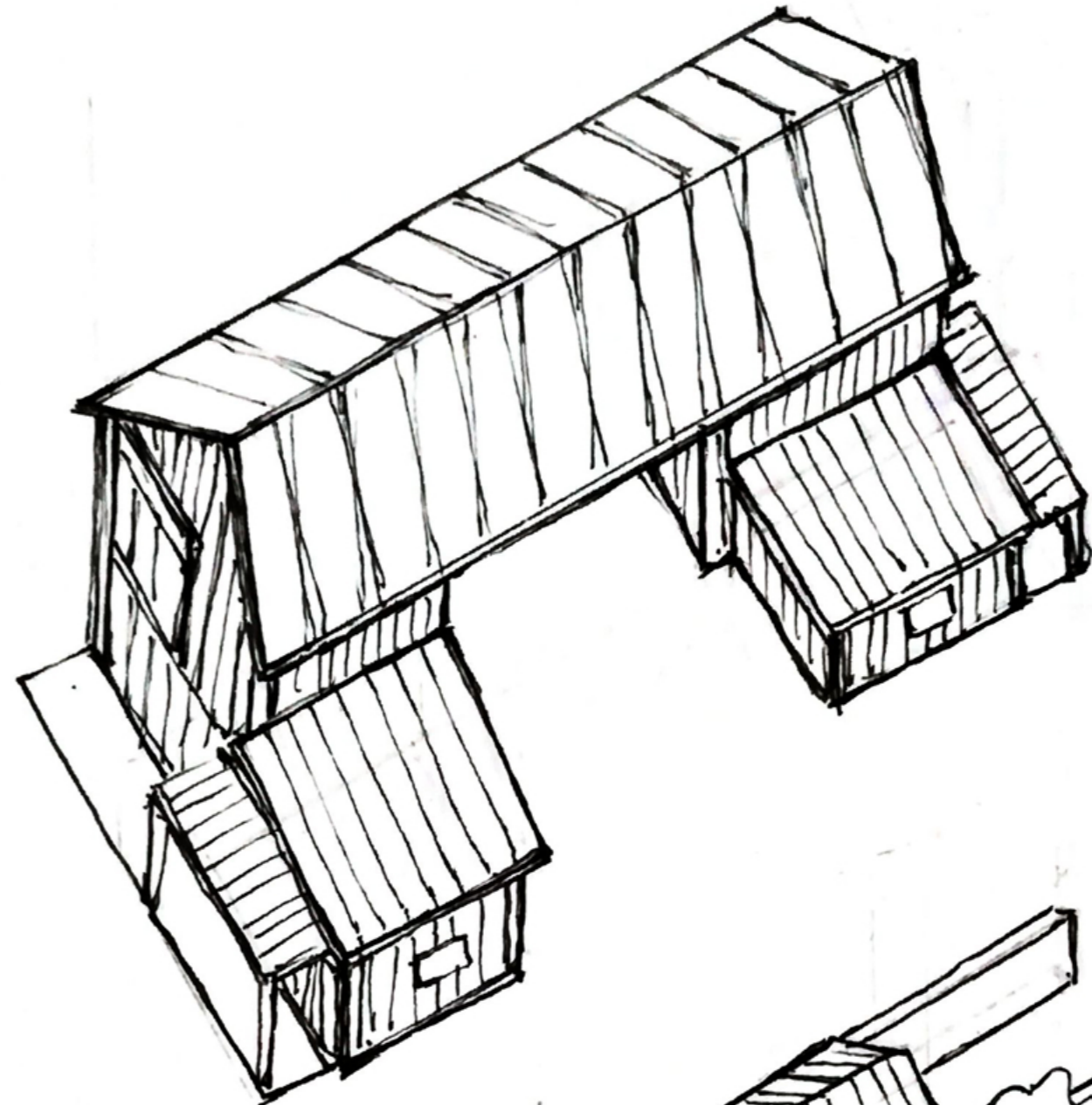


LEGENDE

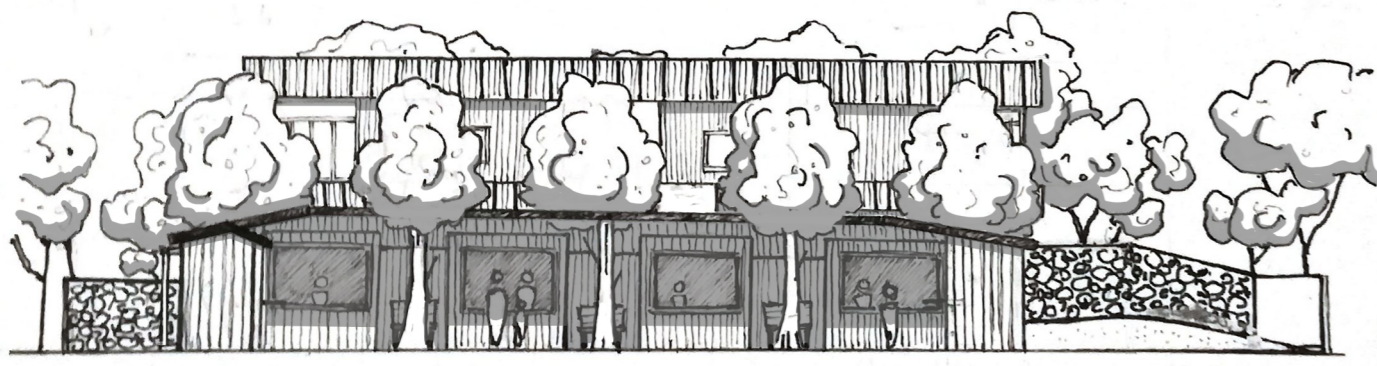
-  Béton et Routes
-  Végérations
-  Arbres
-  Toiture



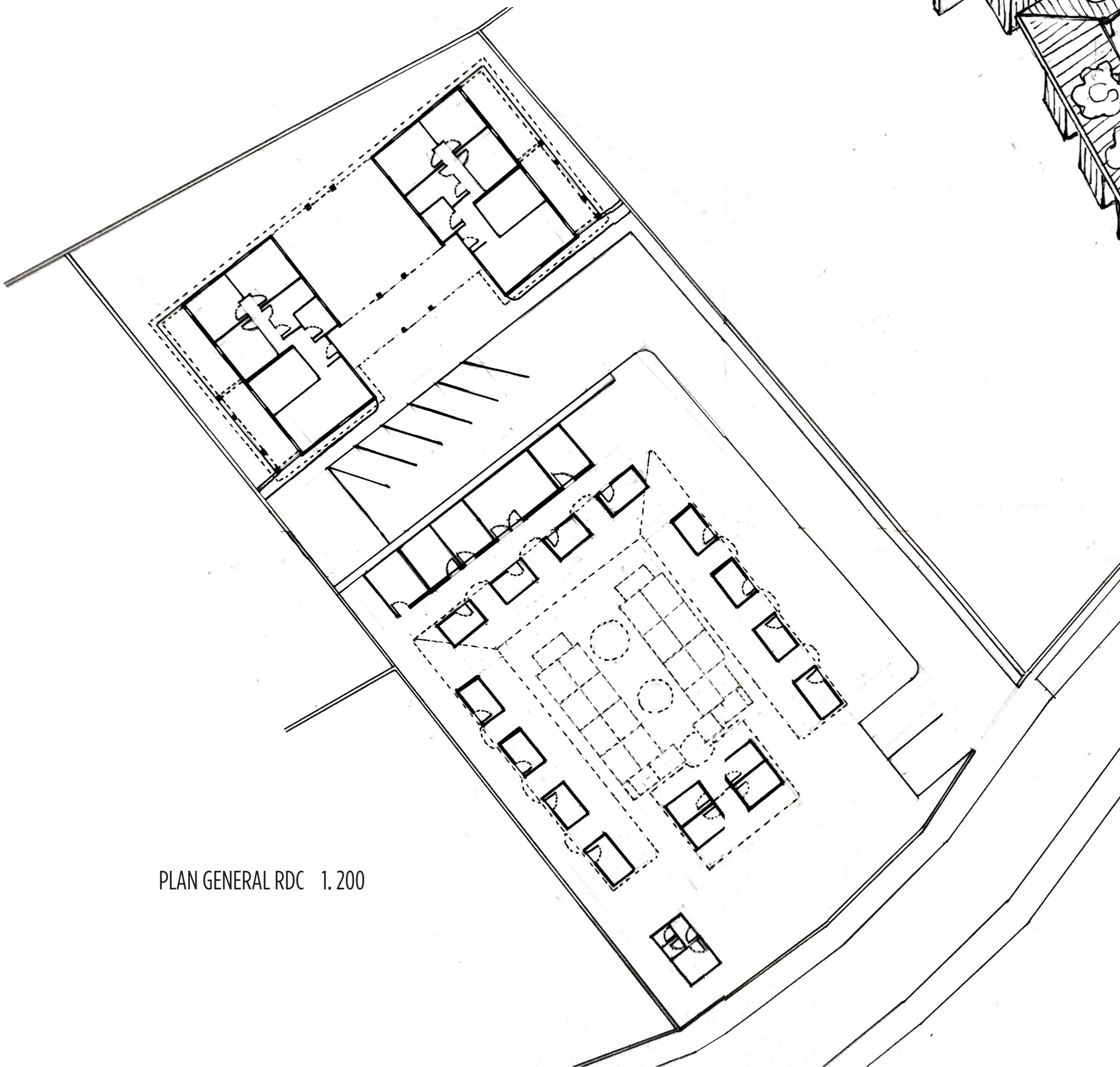
Plan de Situation



AXONOMETRIE COMPLETE 1.200



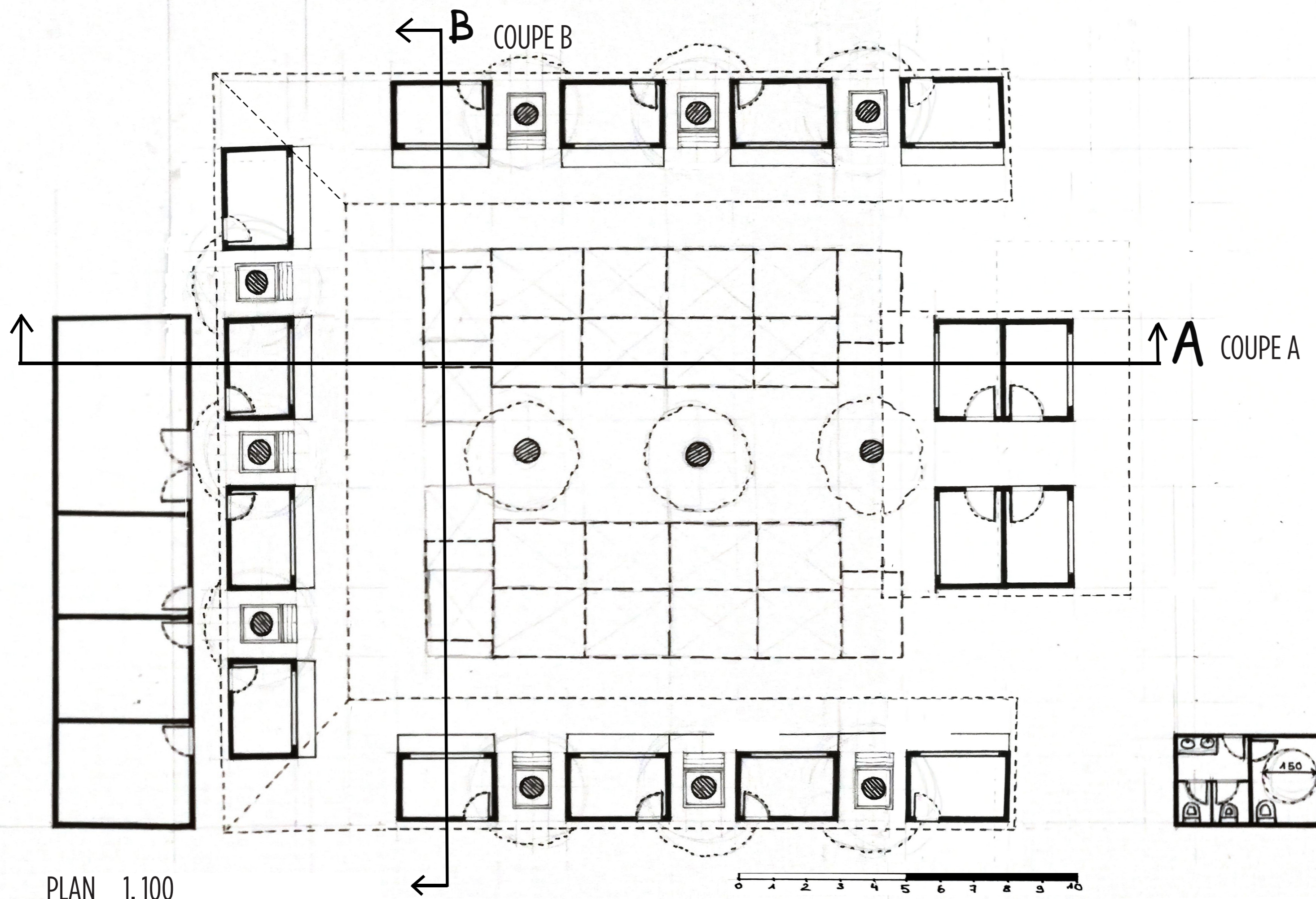
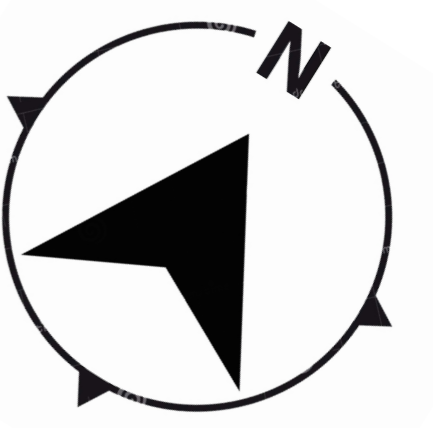
FACADE SUR RUE 1.200



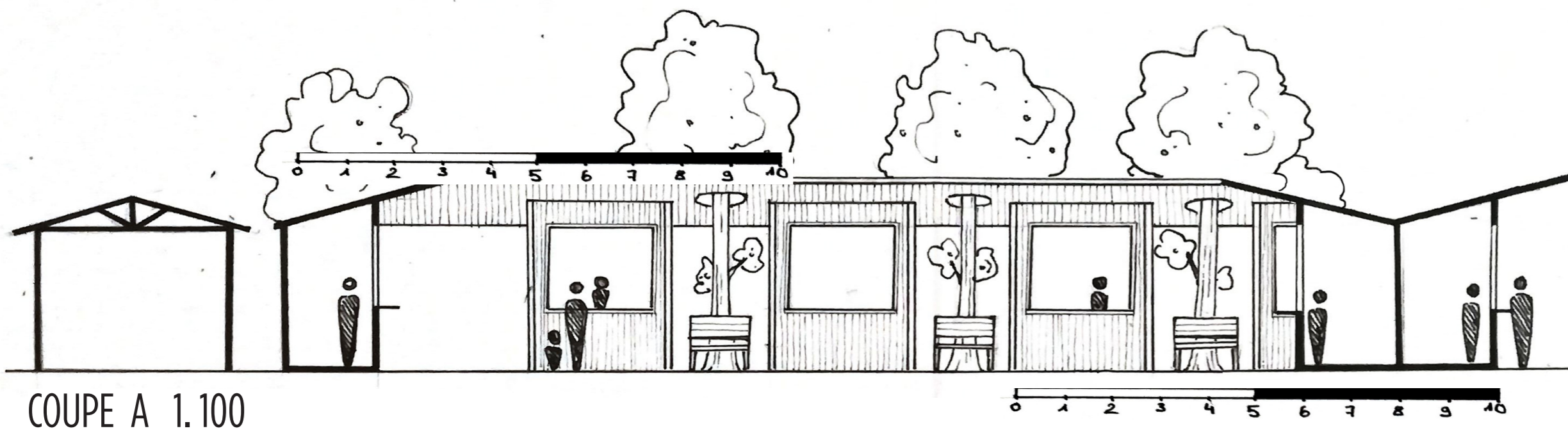
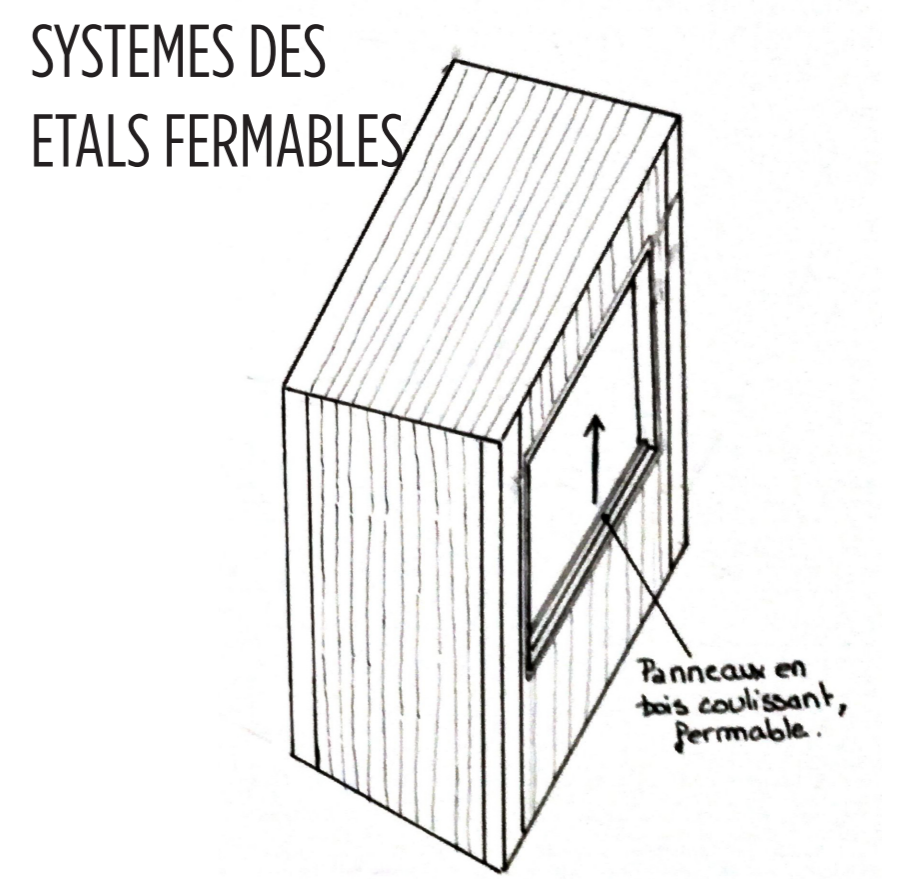
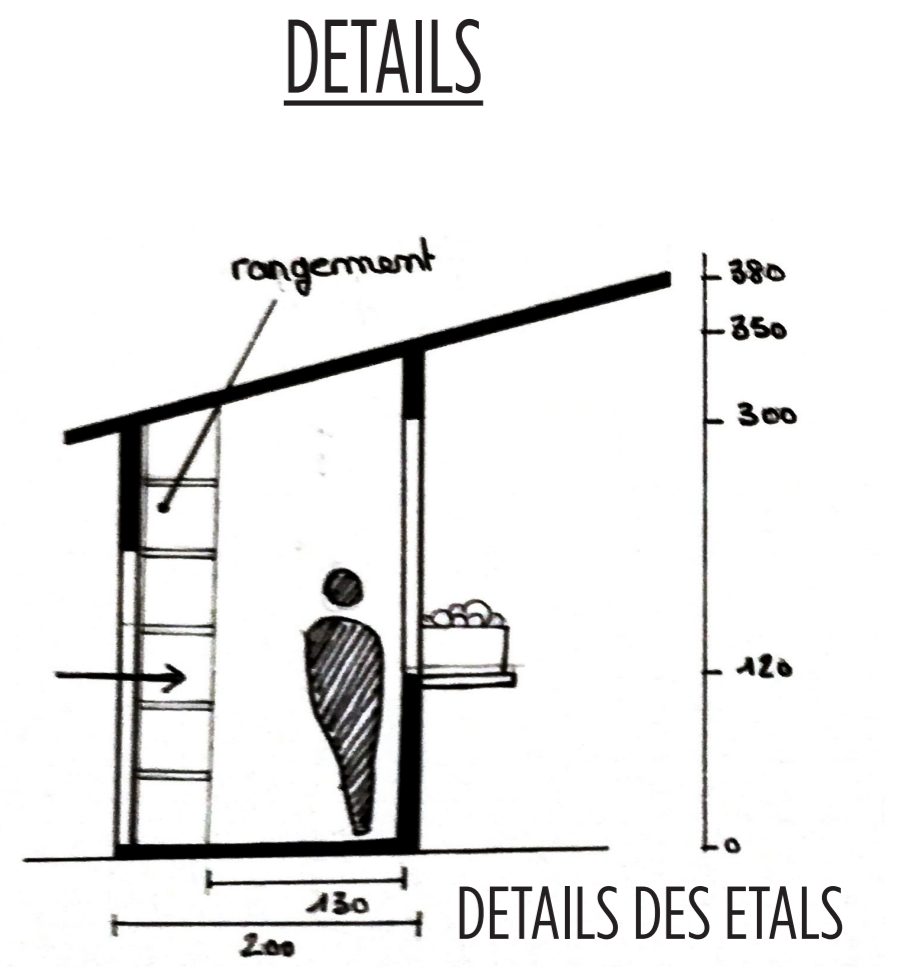
PLAN GENERAL RDC 1.200

HABITER LE TERRITOIRE - Repenser le Centre-Bourg

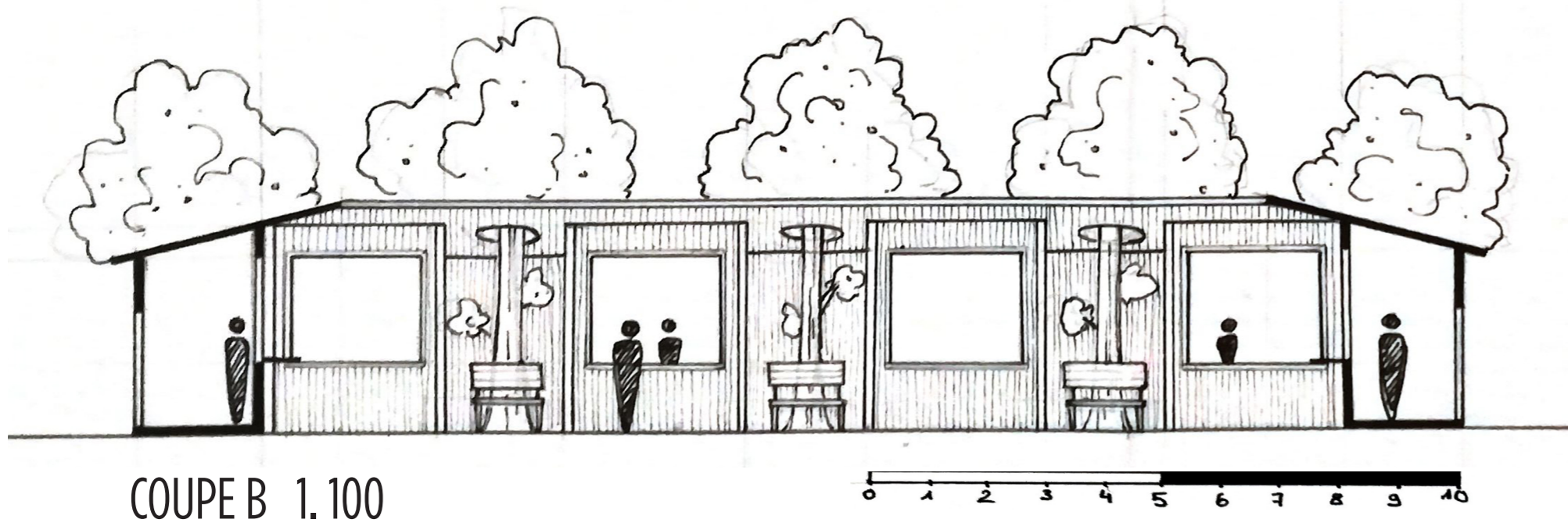
LE MARCHE



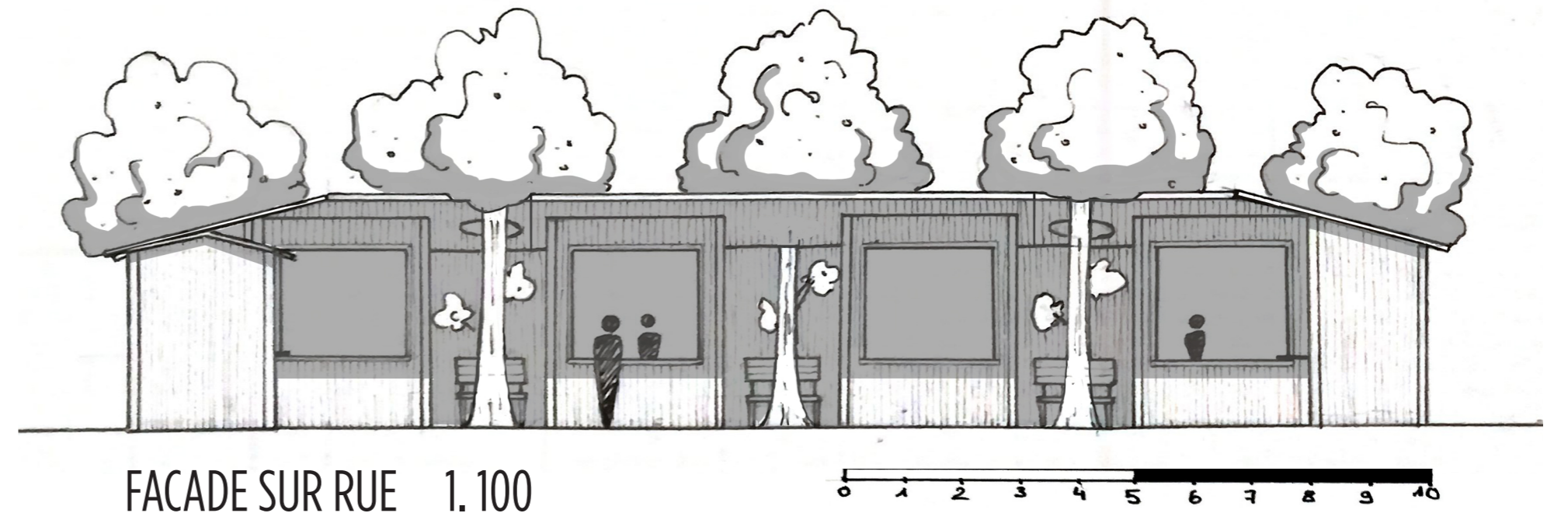
PLAN 1.100



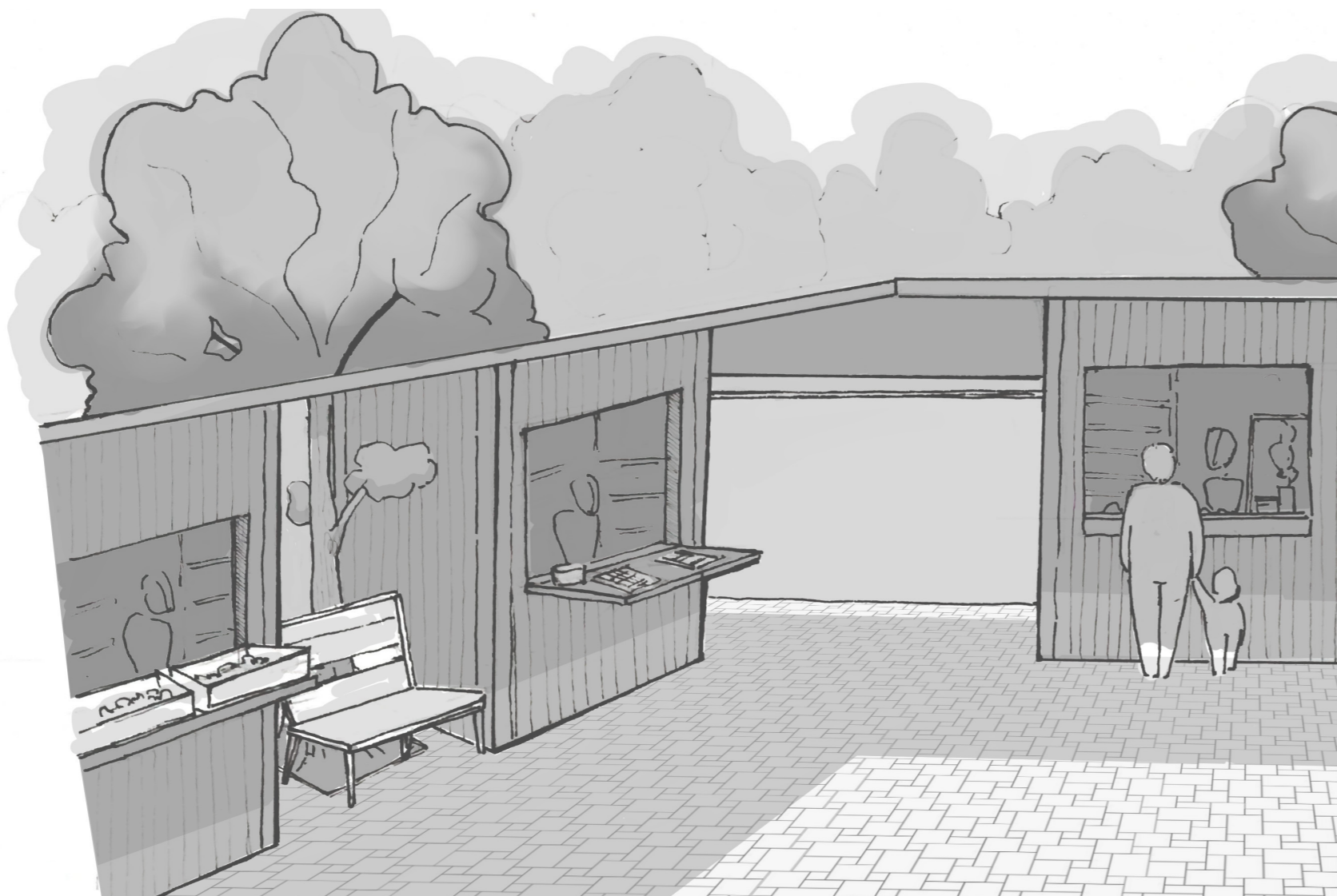
COUPE A 1.100



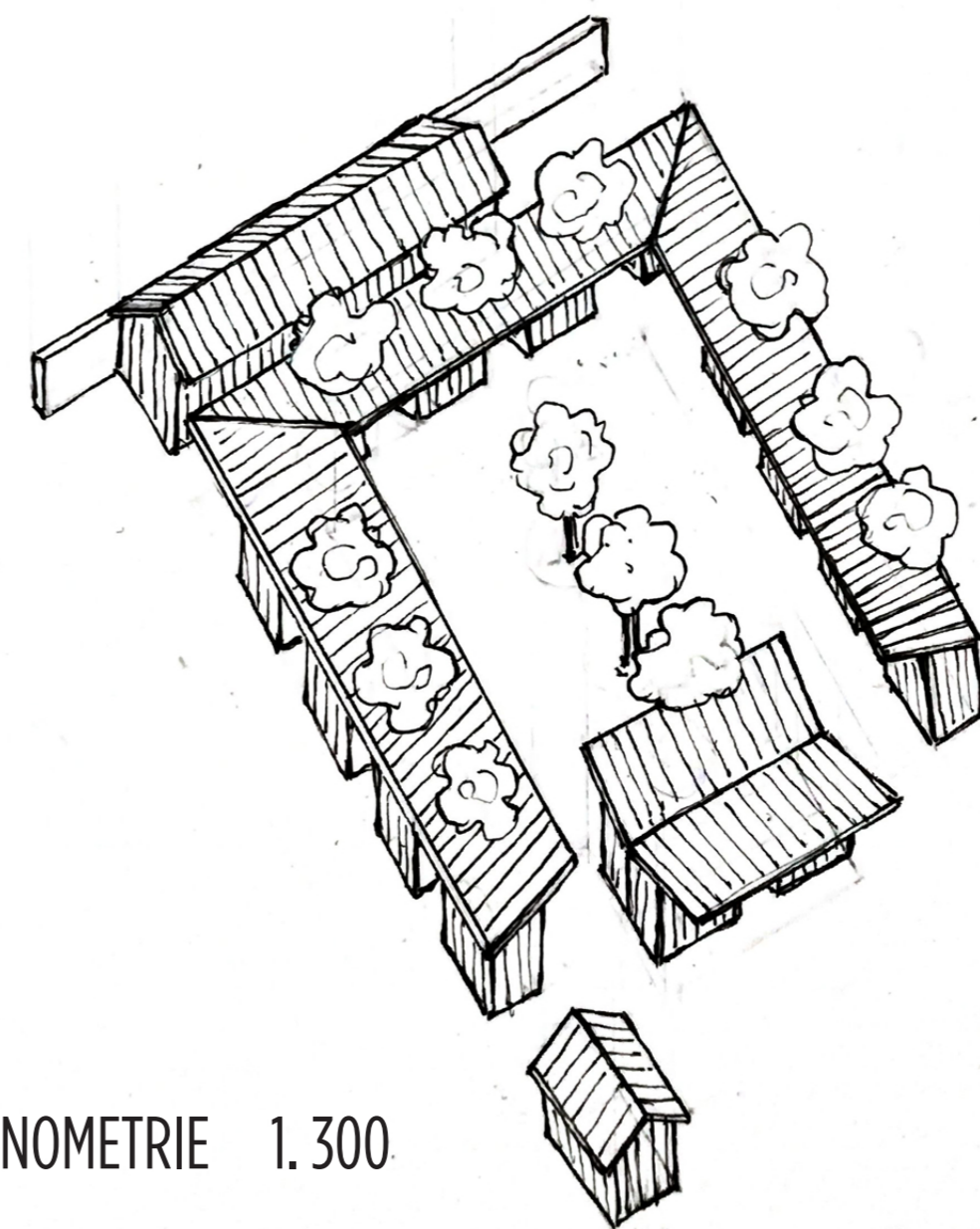
COUPE B 1.100



FACADE SUR RUE 1.100



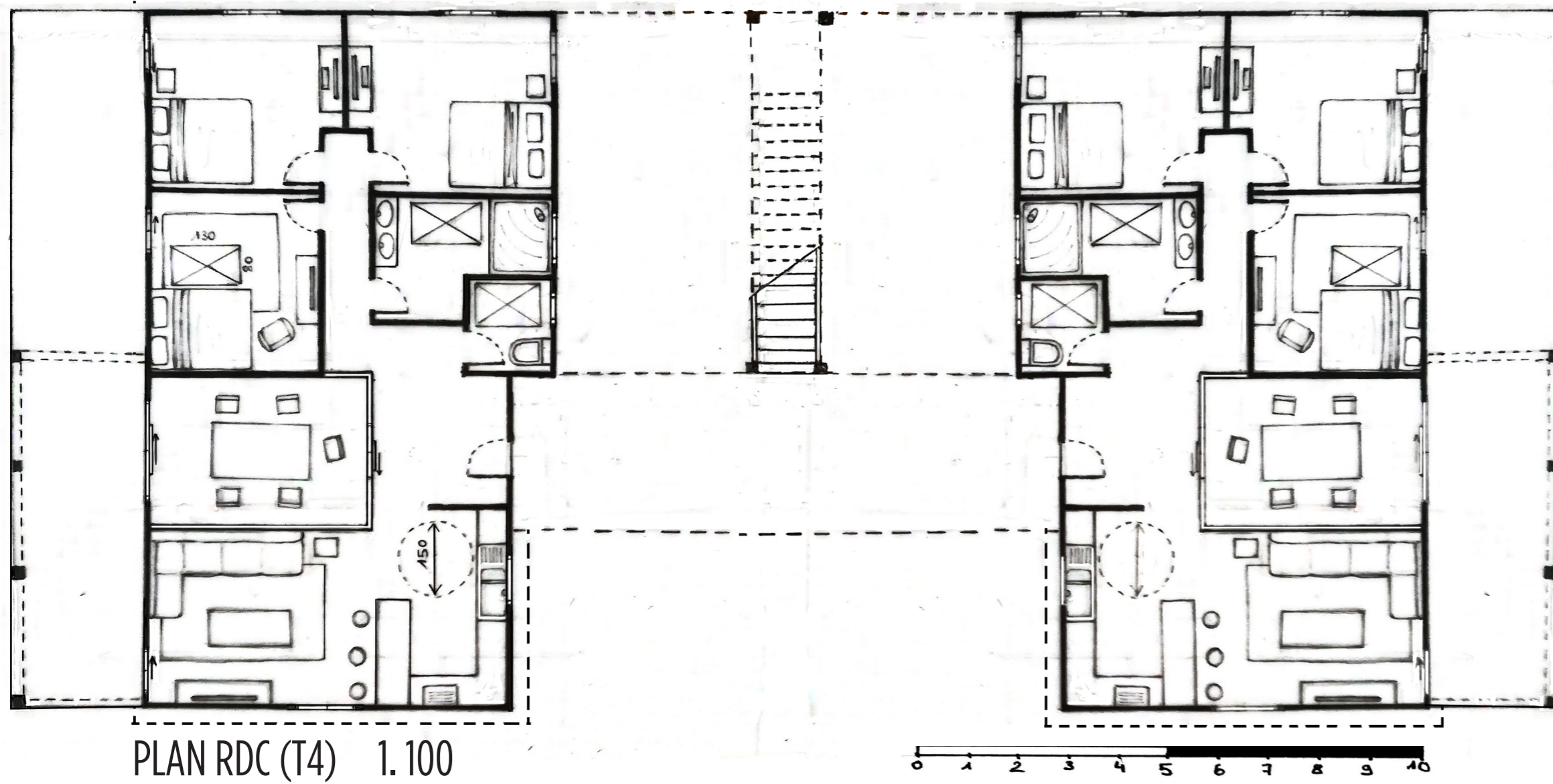
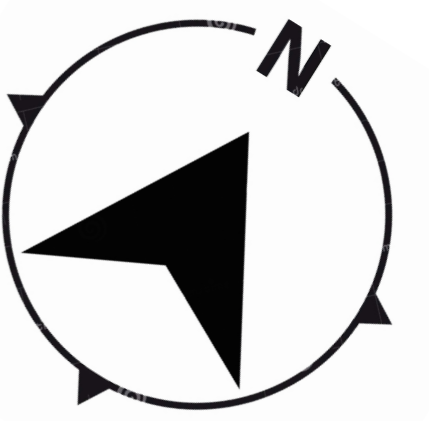
PERSPECTIVE D'AMBIANCE



AXONOMETRIE 1.300

HABITER LE TERRITOIRE - Resenser le Centre-Bourg

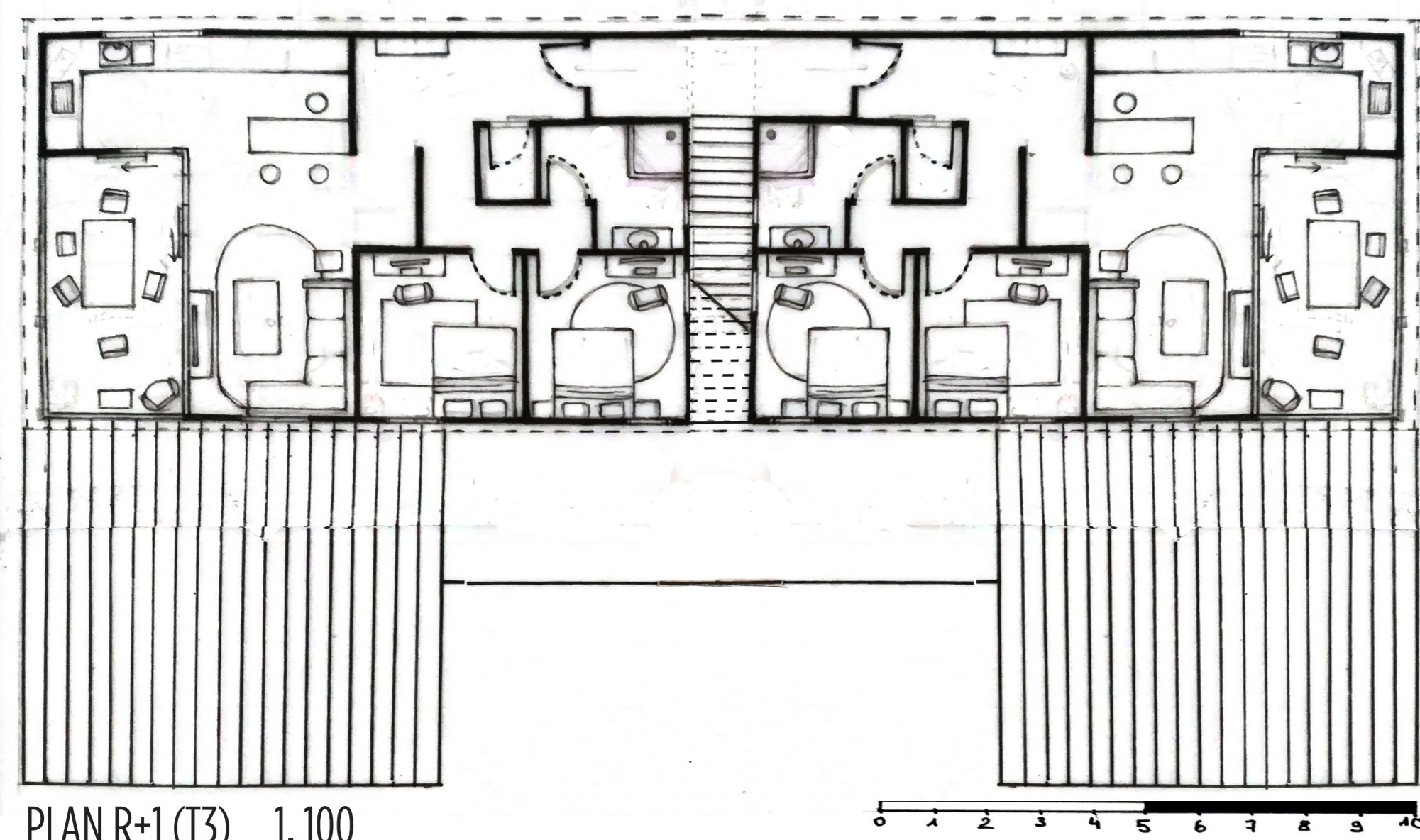
LES LOGEMENTS



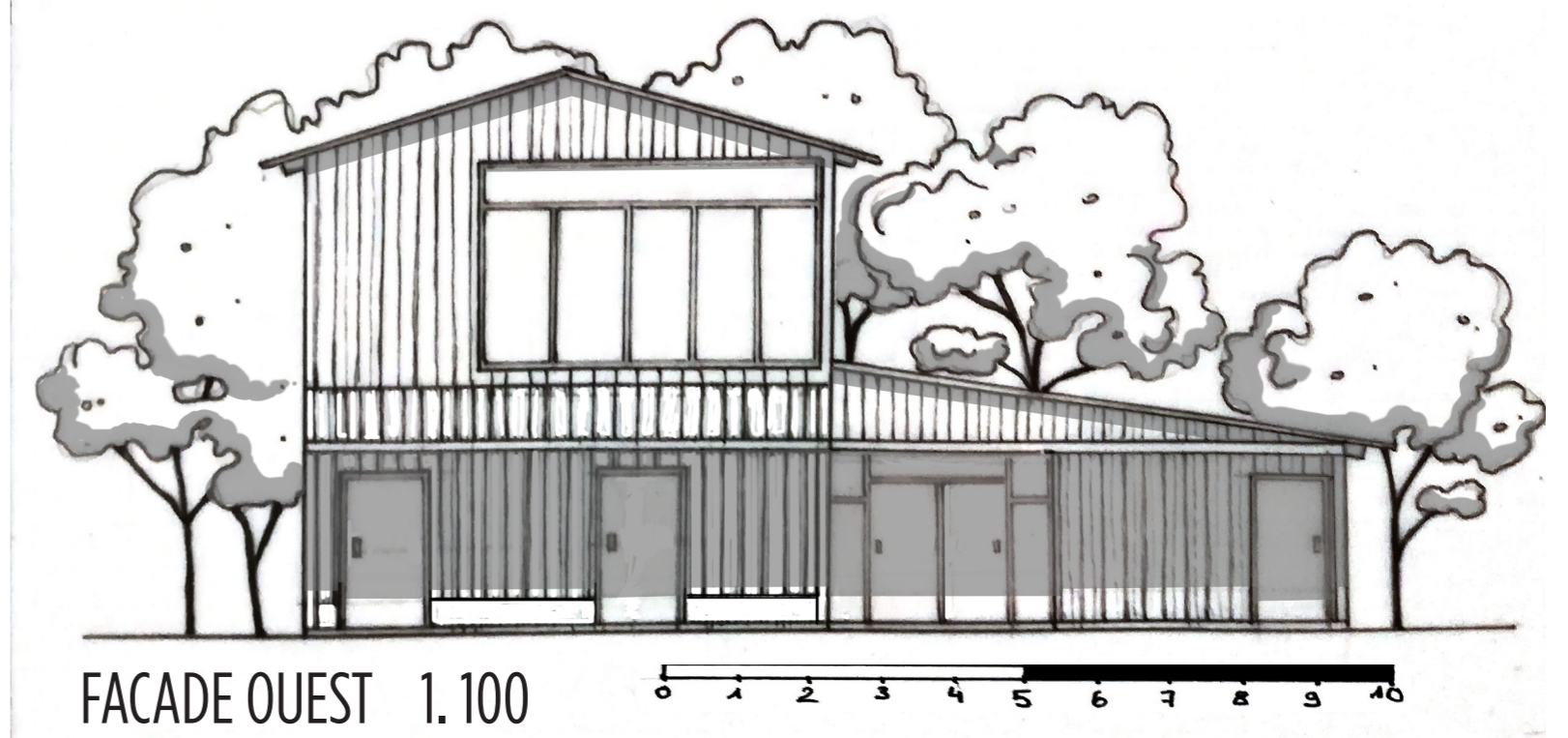
PLAN RDC (T4) 1.100

LEGENDE

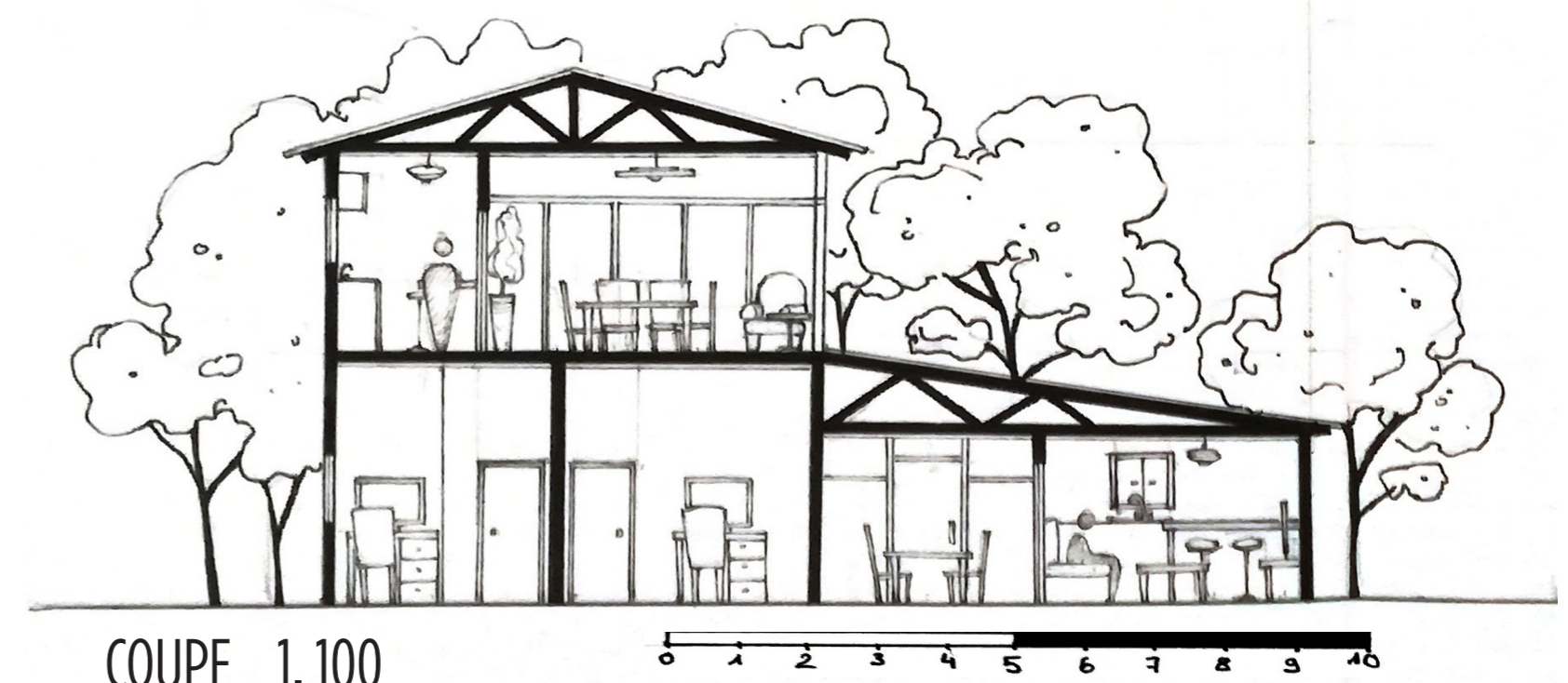
- Murs structure bois
- Vitrages
- Diamètre rotation PMR
- Rectangle d'usage PMR



PLAN R+1 (T3) 1.100



FACADE OUEST 1.100

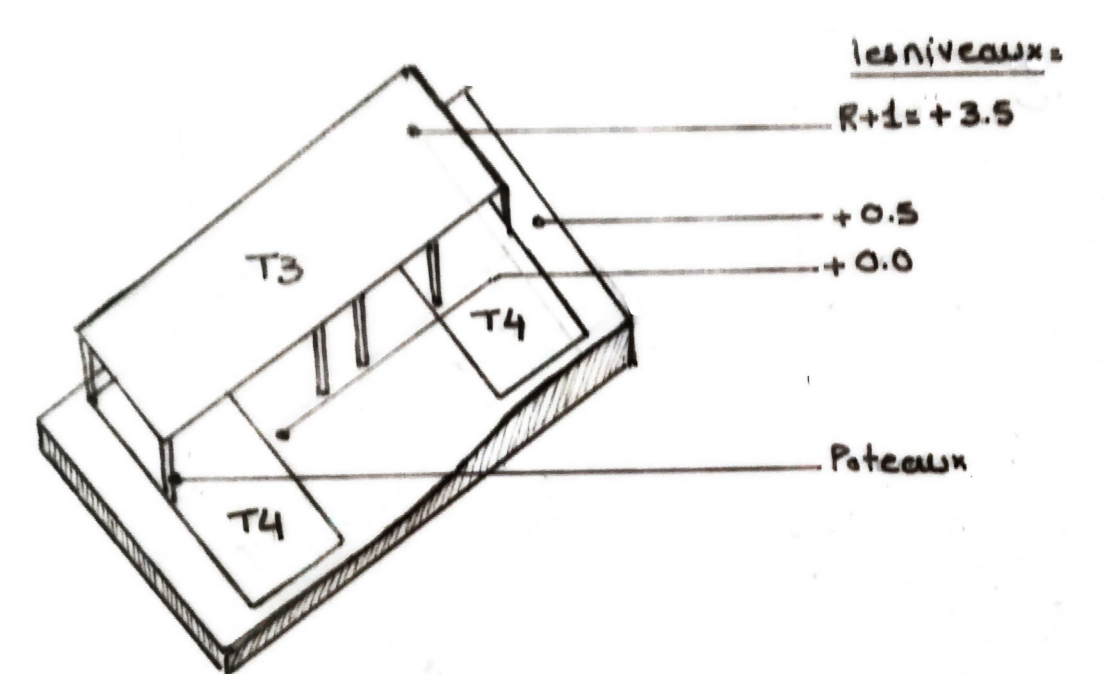


COUPE 1.100



FACADE SUD 1.100

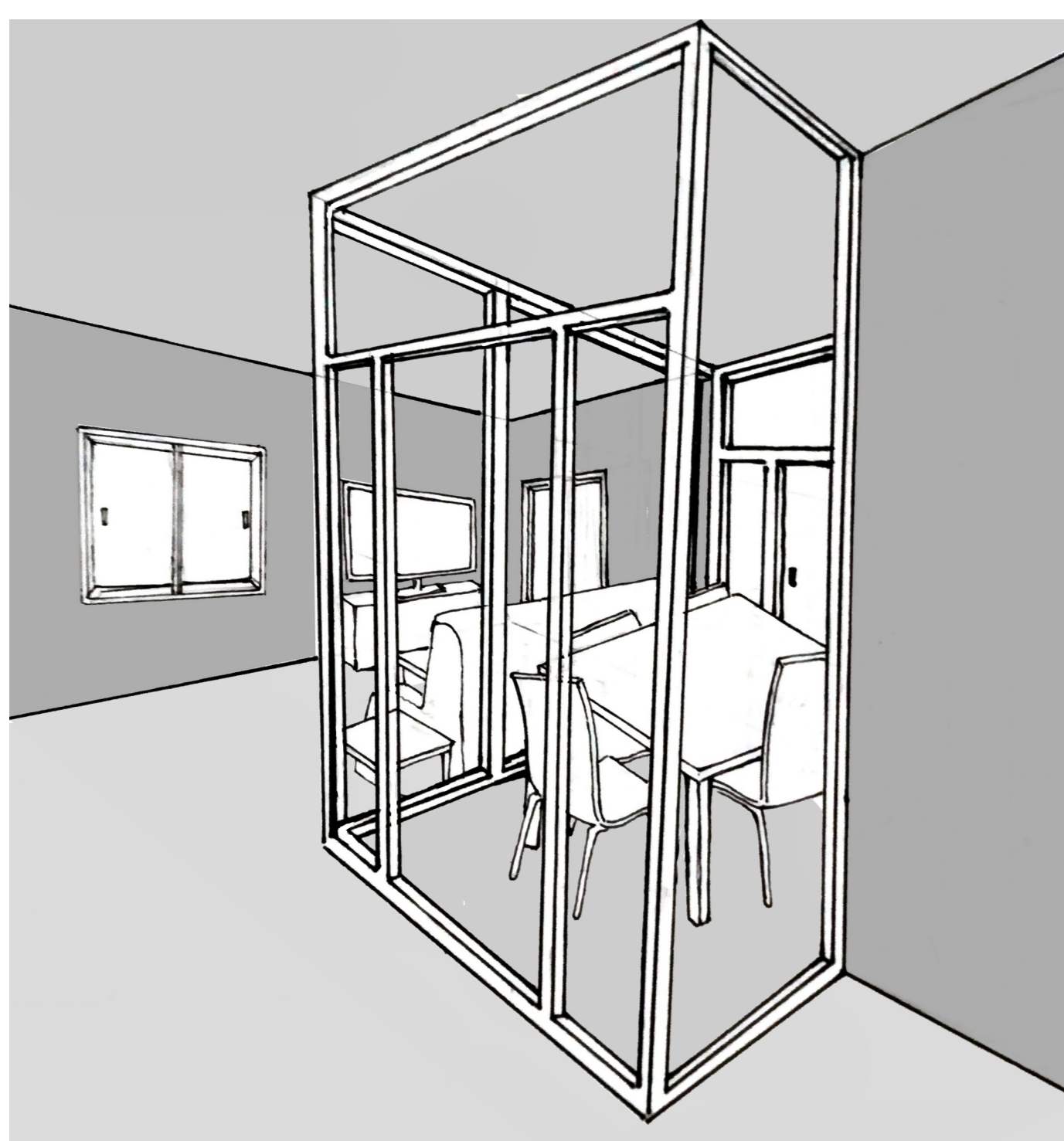
DETAILS



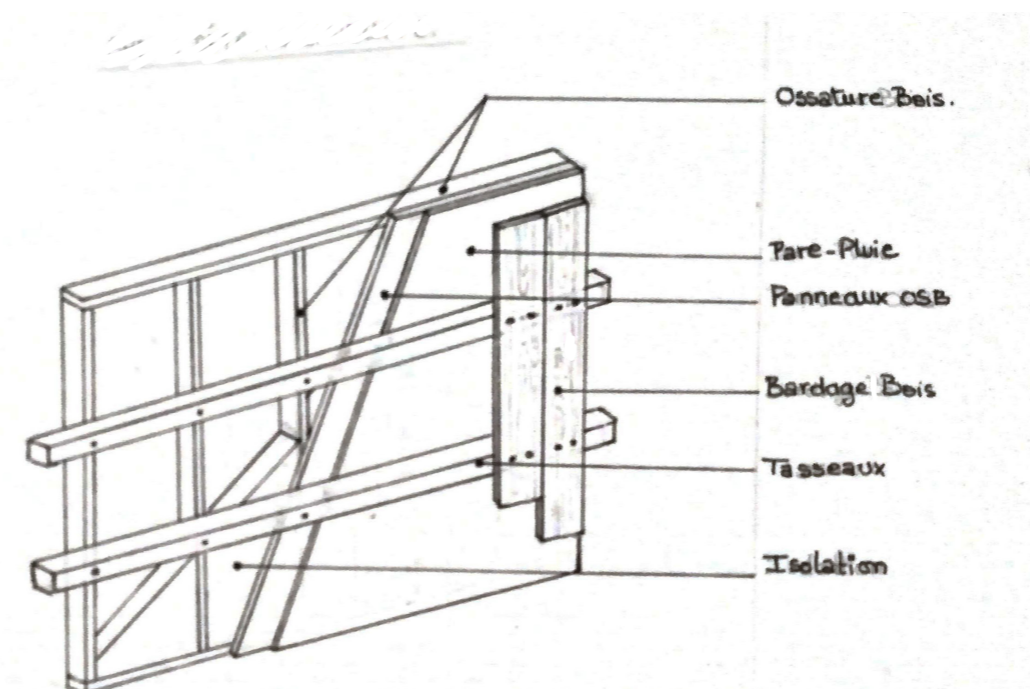
RAPPORT AU SOL



ESPACES SERVIS ET ESPACES SERVANTS



PERSPECTIVE D'AMBIANCE - Jardin d'Hiver



L' ENVELOPPE - Structure bois