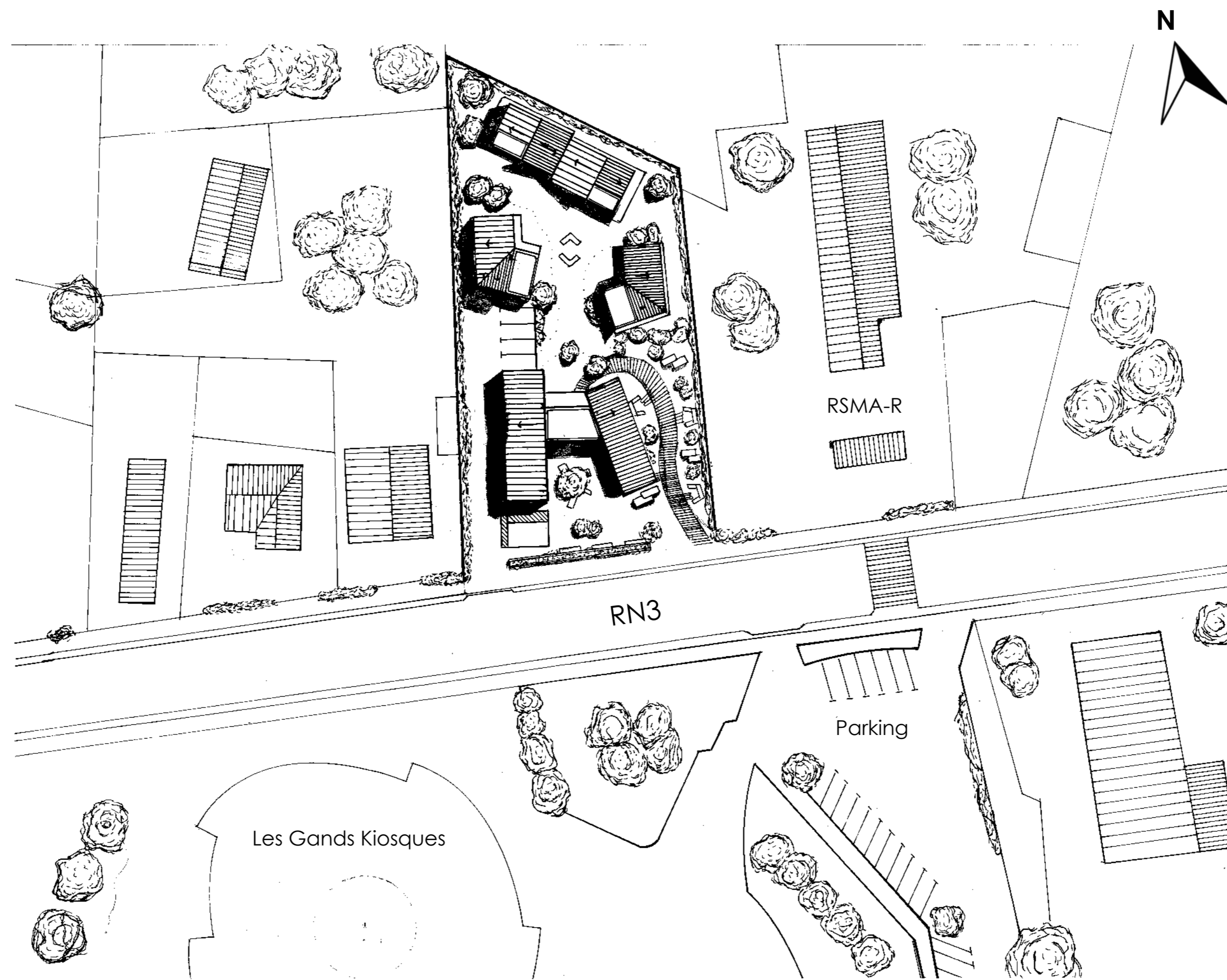


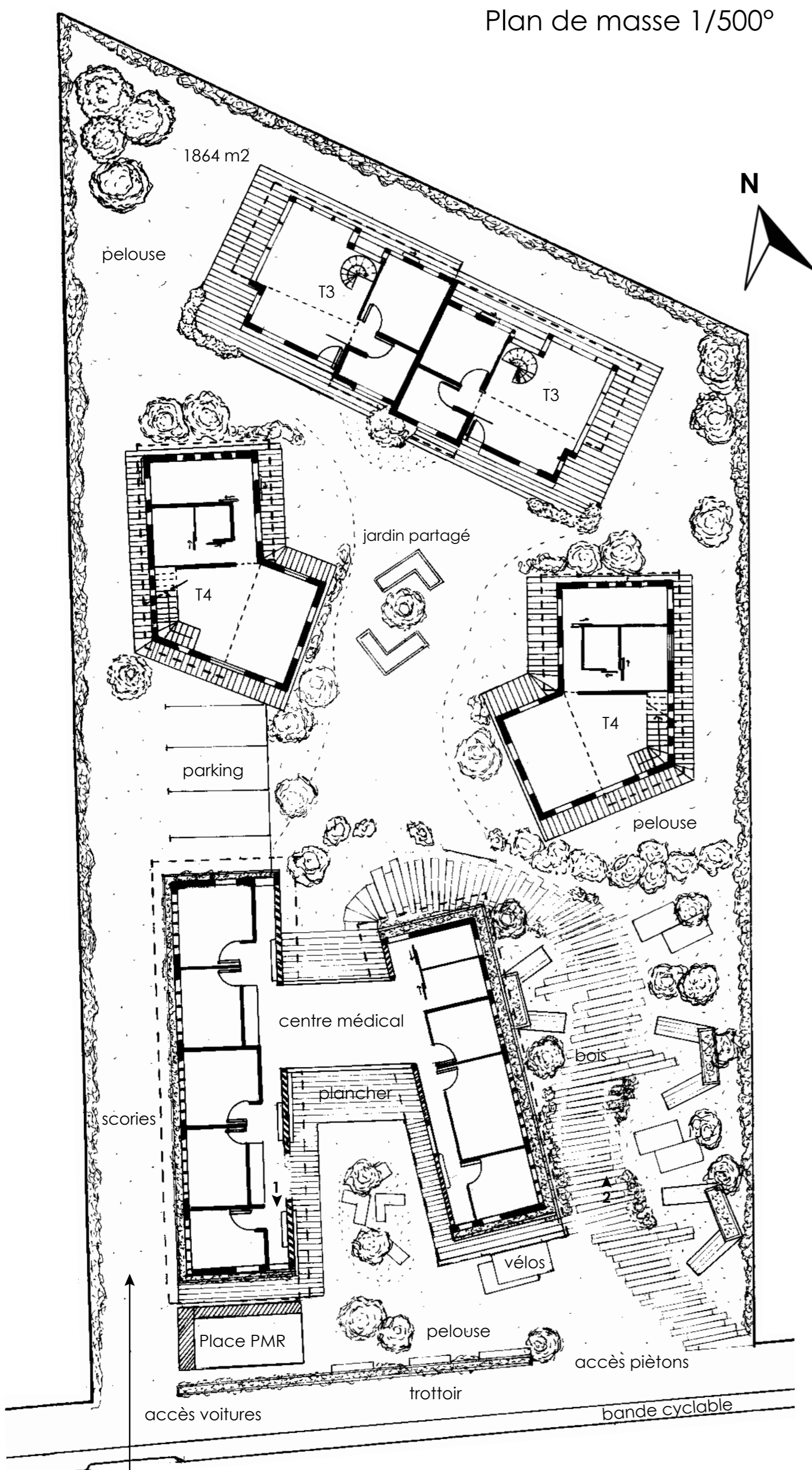
FRAGMENTS DE VIE

Site 5 : 4 Habitats groupés / Centre médical

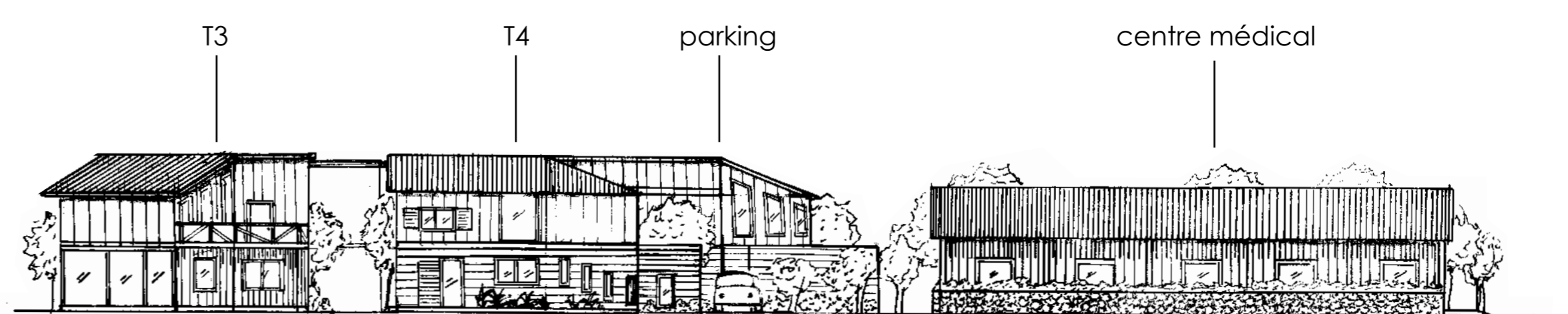
« Enjeu urbain : Renforcement de l'entrée de ville »



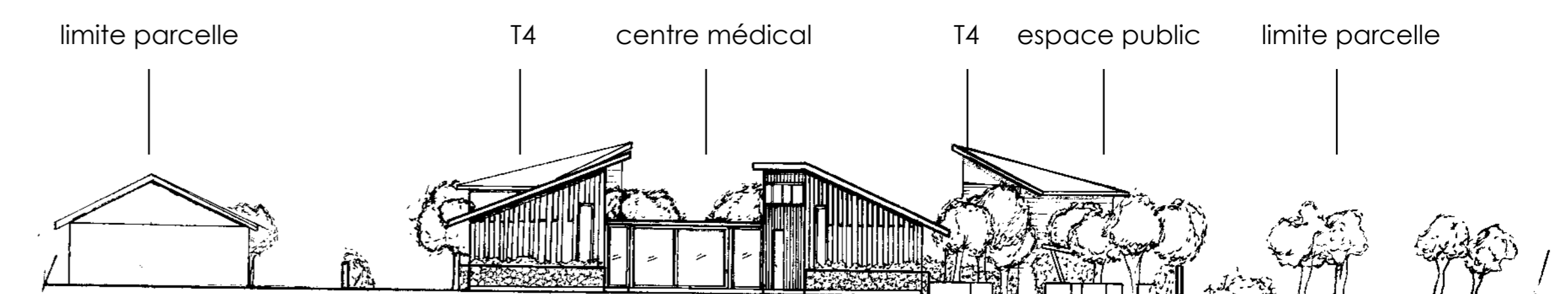
Plan de masse 1/500°



Plan Général Des Rez De Chaussées 1/200°



Façade EST 1/200°

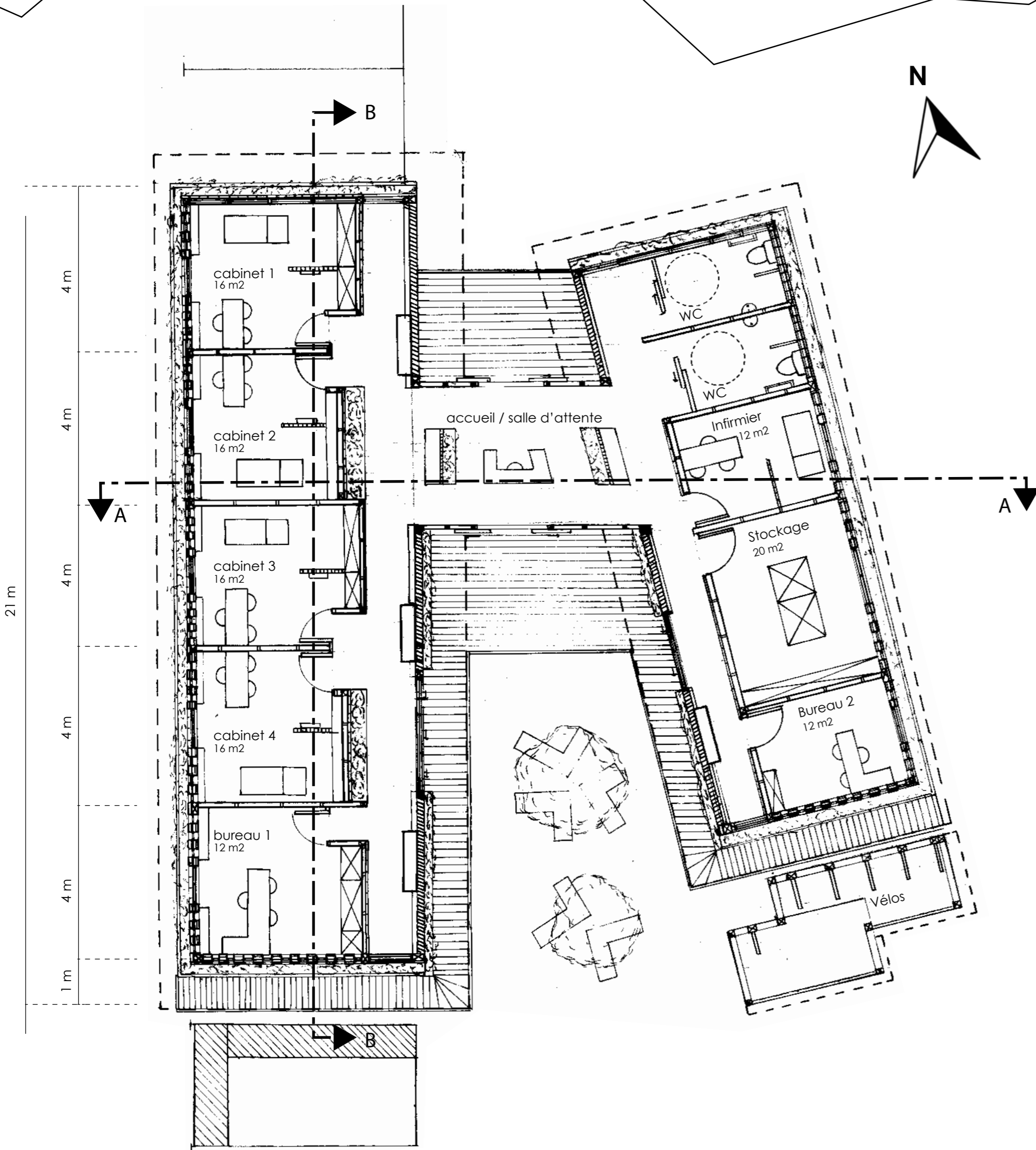


Façade sur rue 1/200°

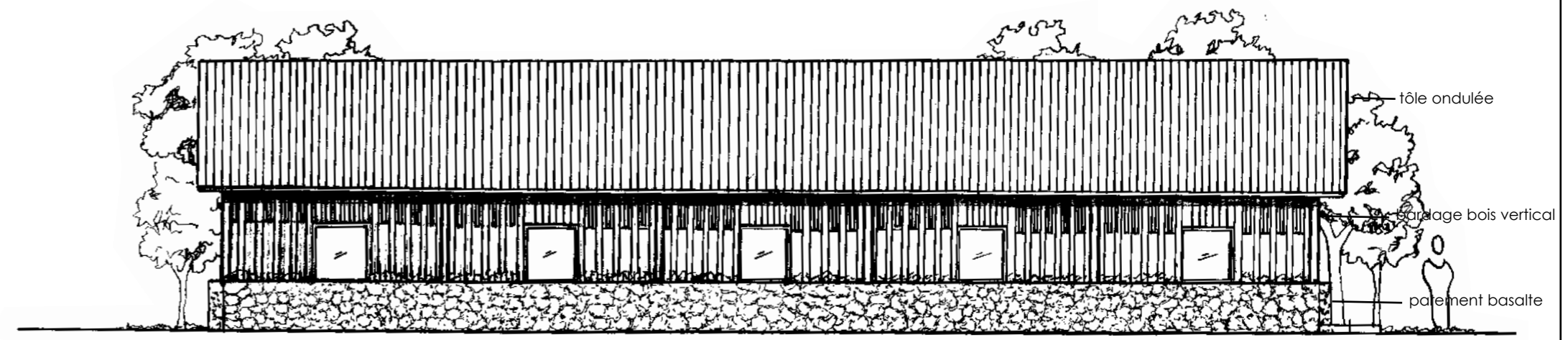
FRAGMENTS DE VIE

Site 5 : 4 Habitats groupés / Centre médical

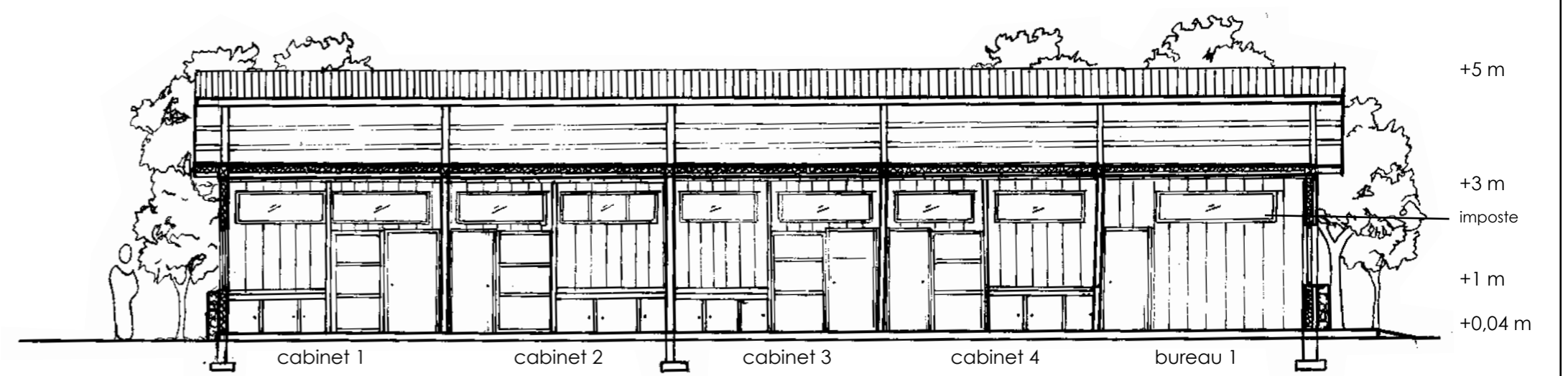
« Enjeu urbain : Renforcement de l'entrée de ville »



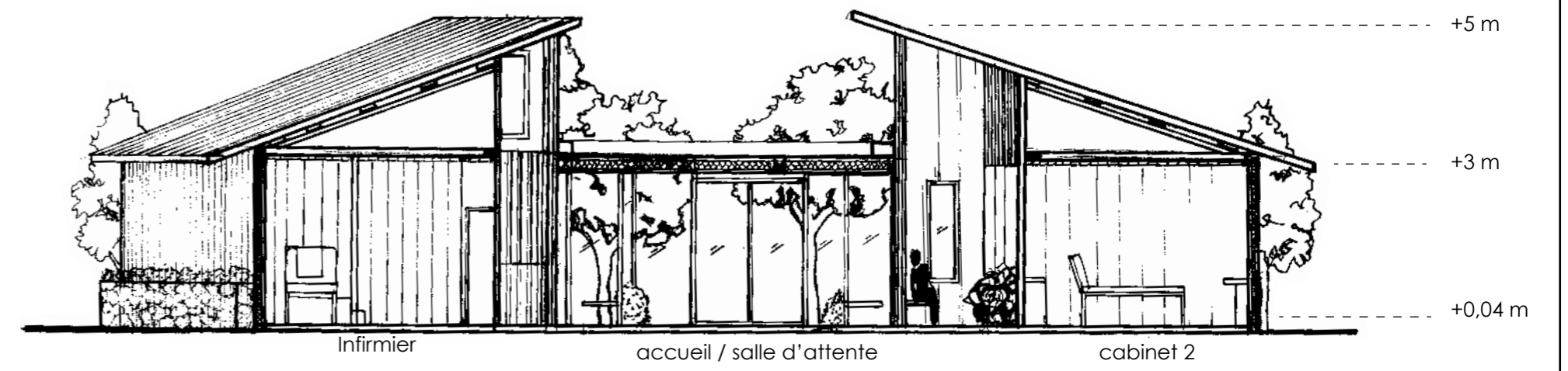
Plan Centre Médical 1/100°



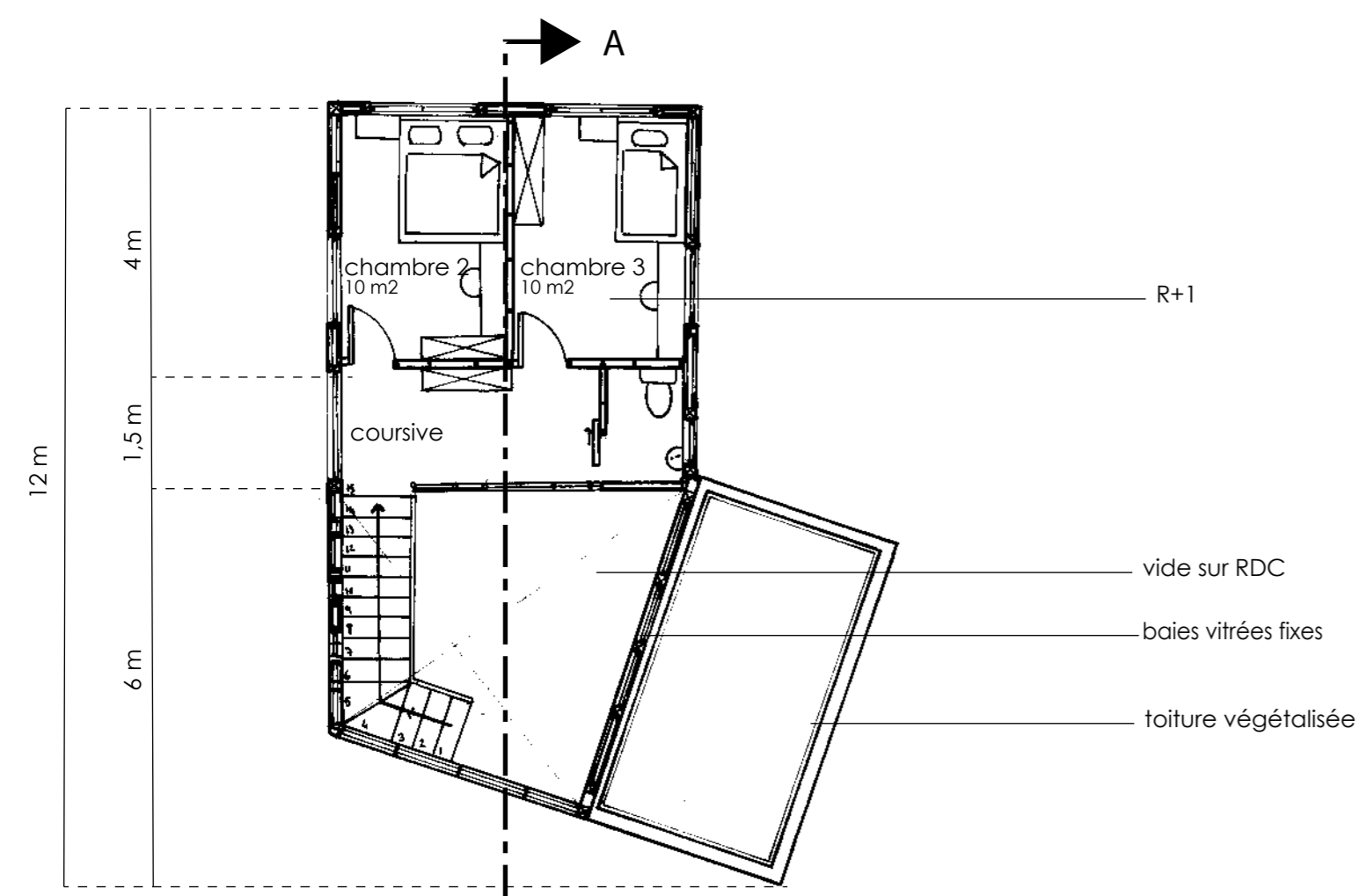
Façade EST Centre Médical 1/100°



Coupe BB Centre Médical 1/100°

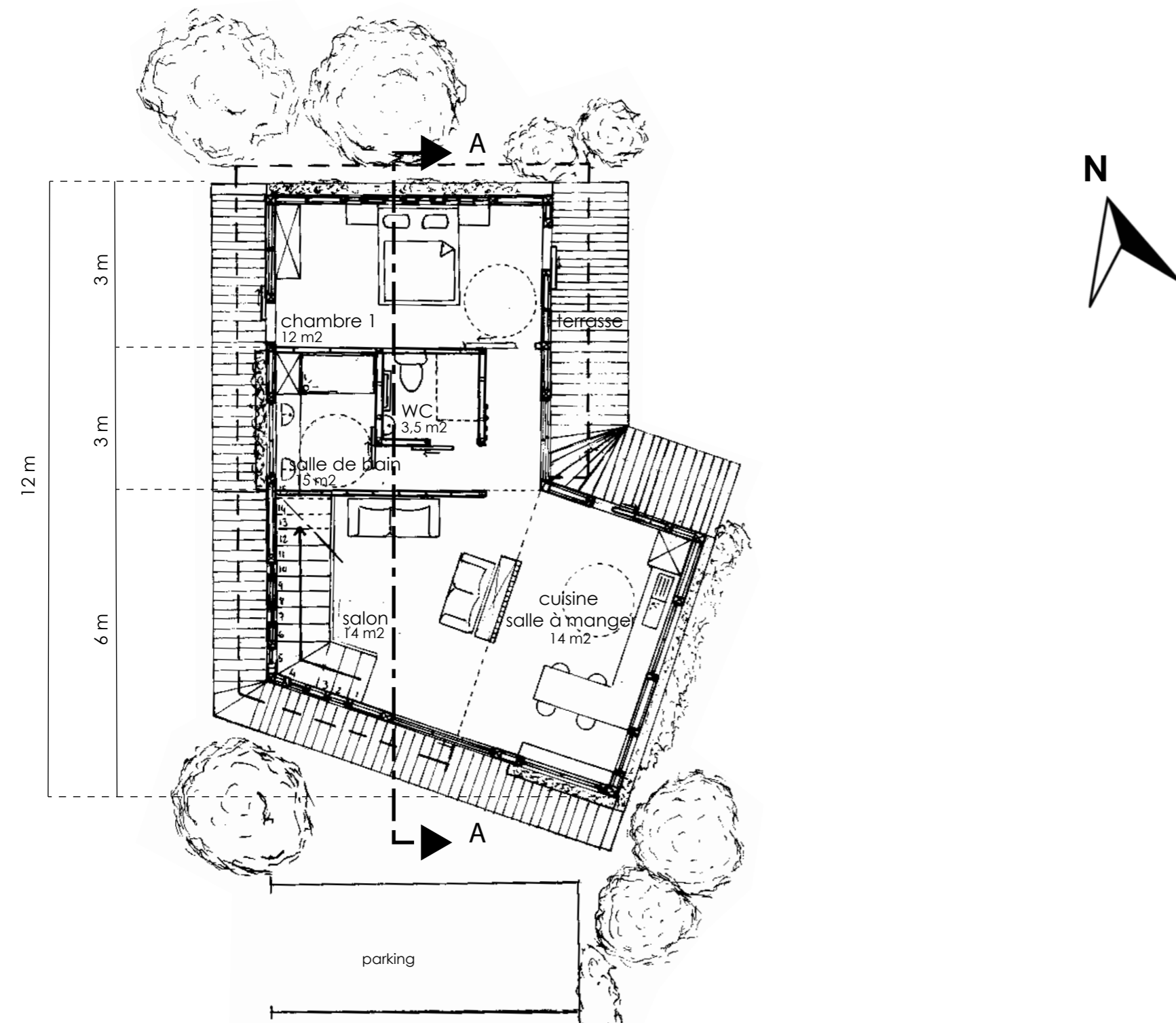
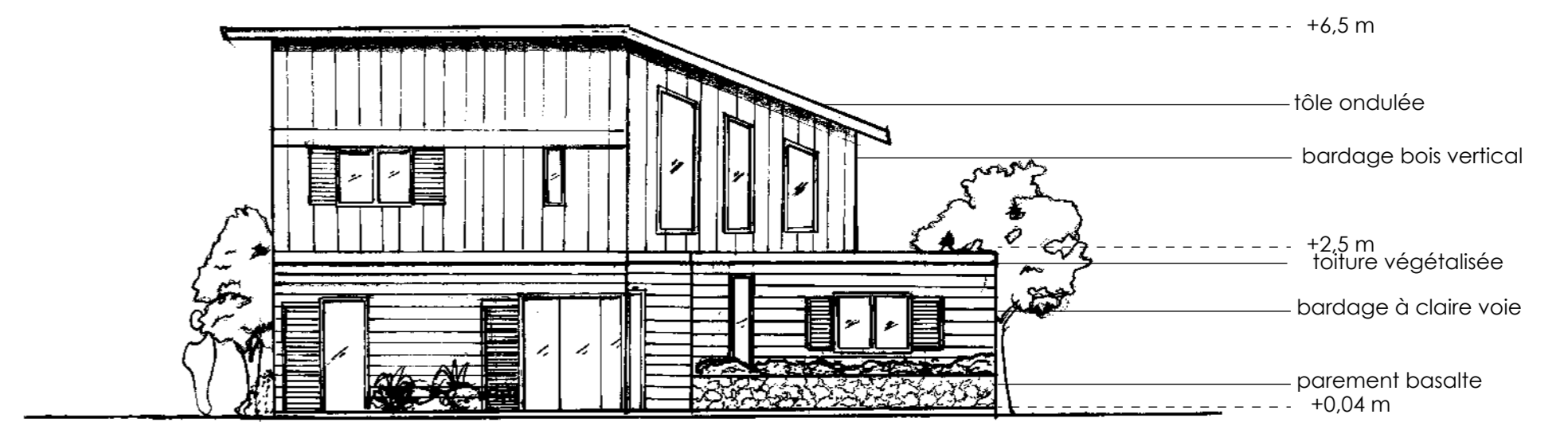


Coupe AA Centre Médical 1/100°

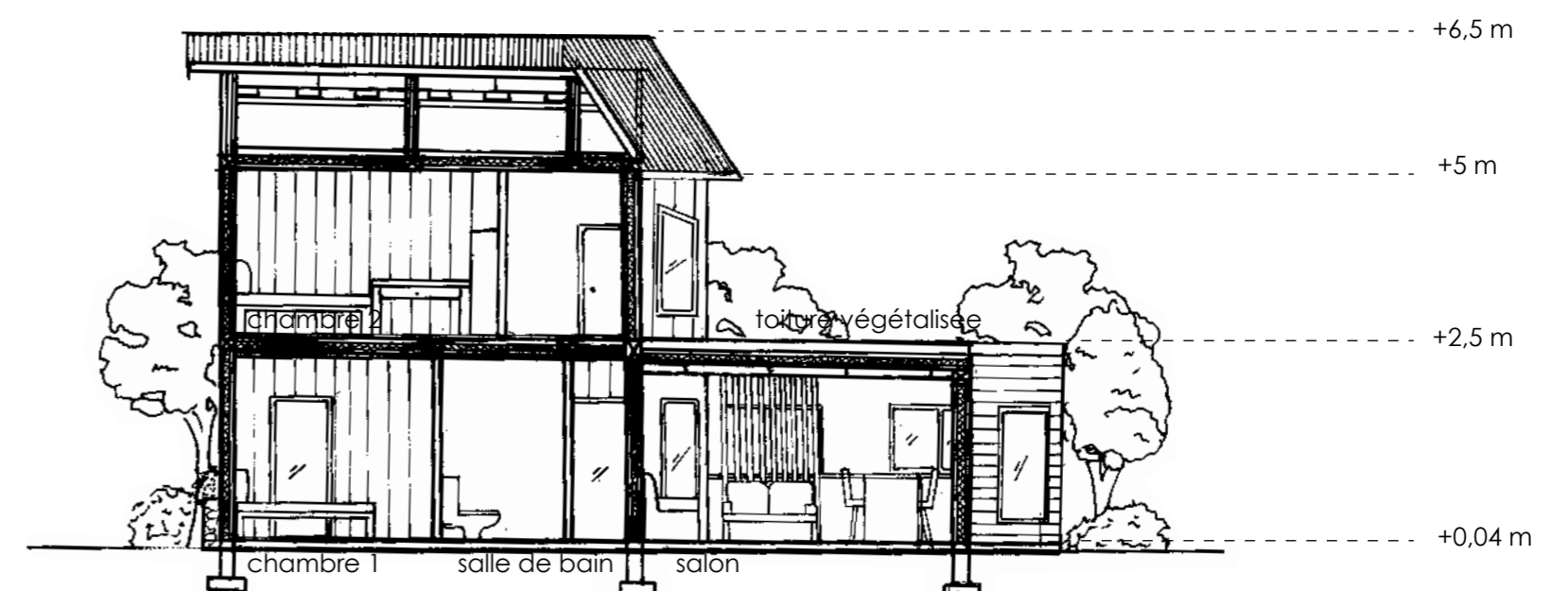


Plan R+1 Logement T4 1/100°

Façade OUEST 1/100°



Plan RDC Logement T4 1/100°

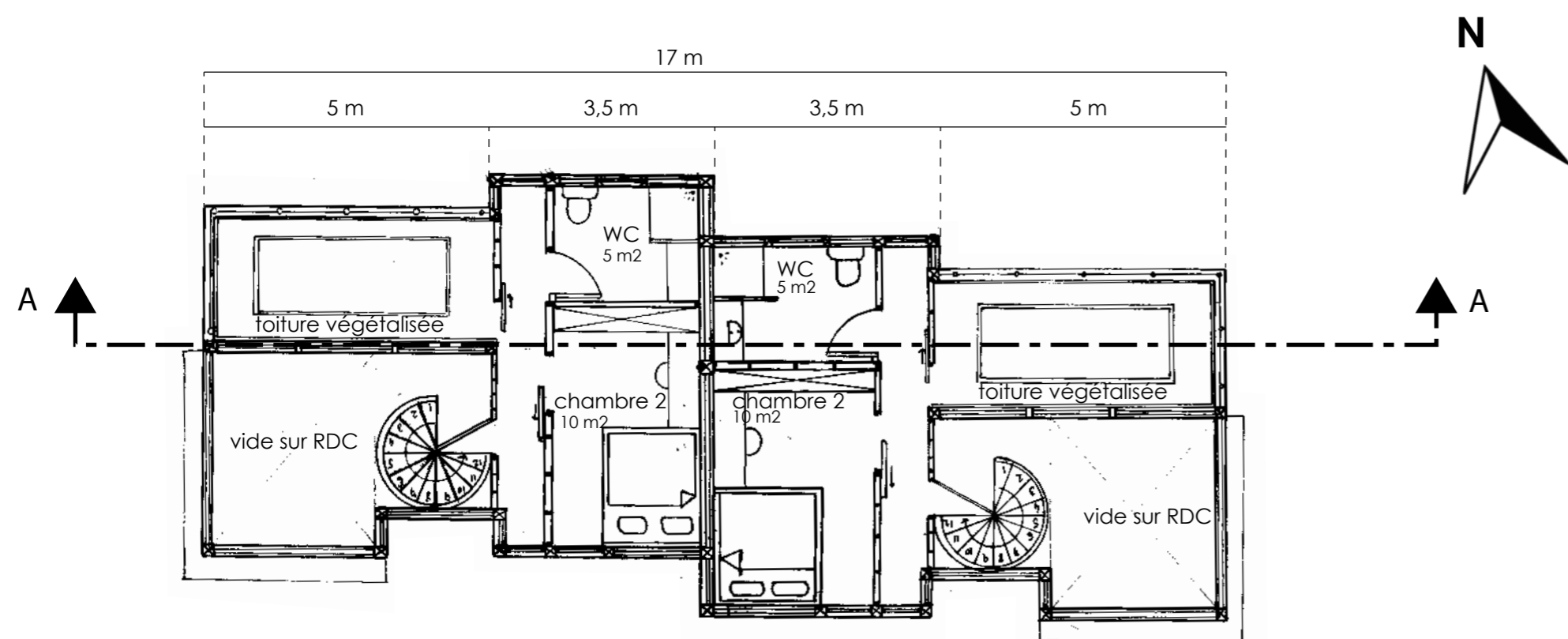


Coupe AA 1/100°

FRAGMENTS DE VIE

Site 5 : 4 Habitats groupés / Centre médical

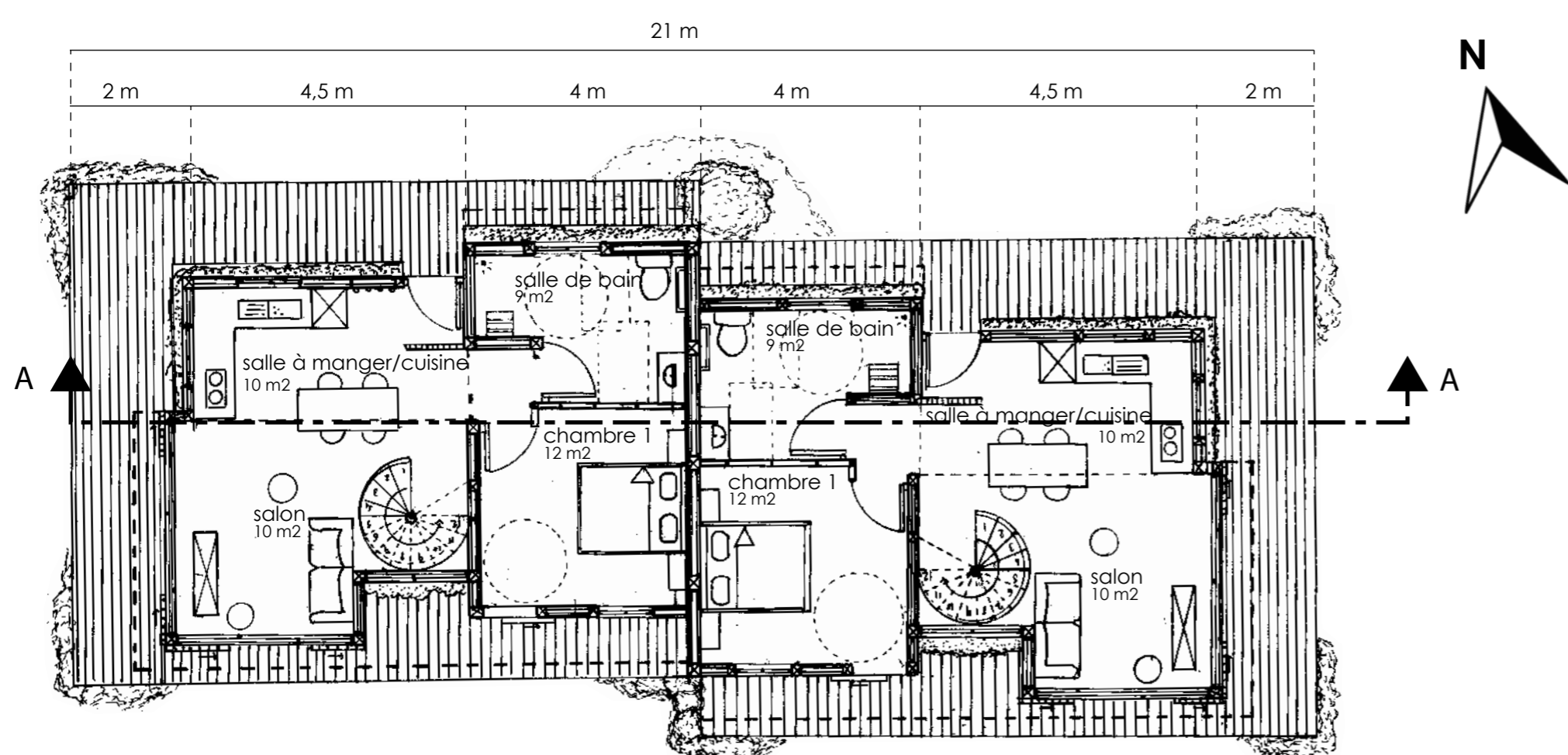
« Enjeu urbain : Renforcement de l'entrée de ville »



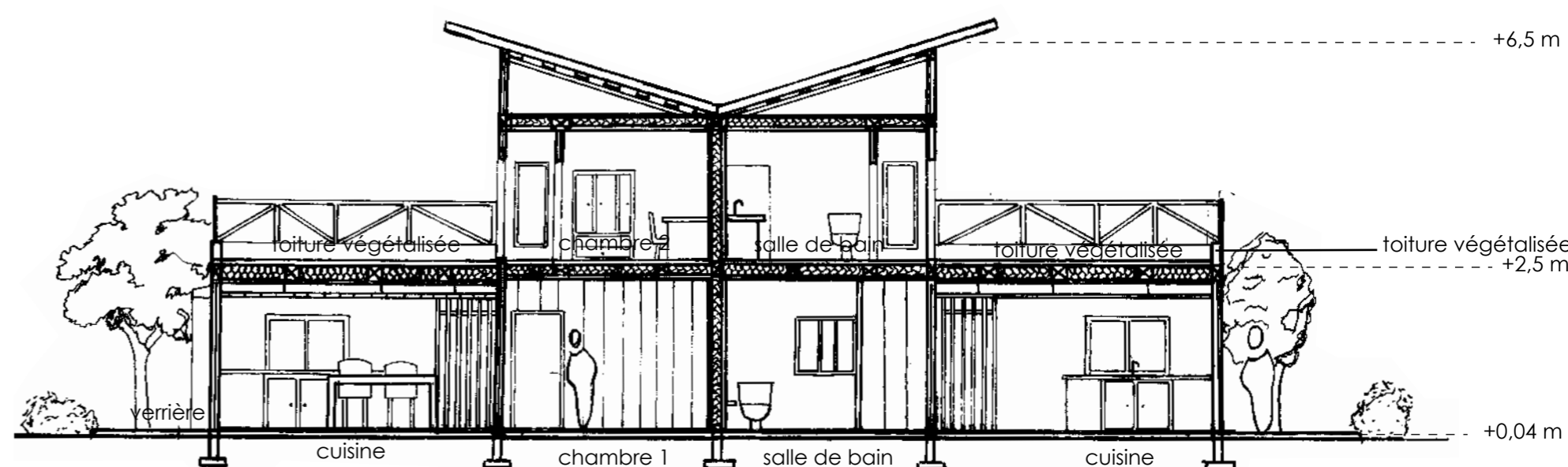
Plan R+1 Logements T3 1/100°



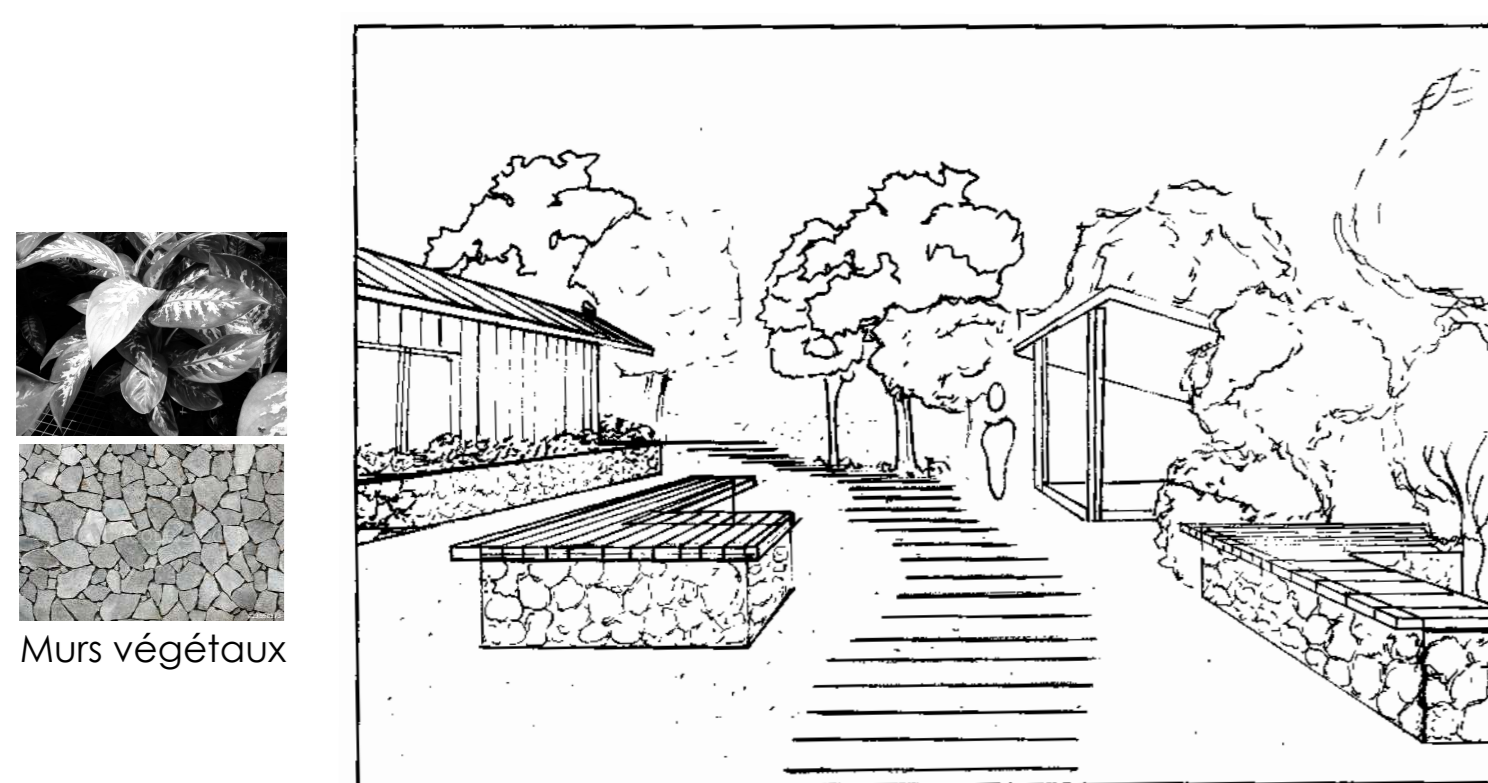
Façade SUD Logements T3 1/100°



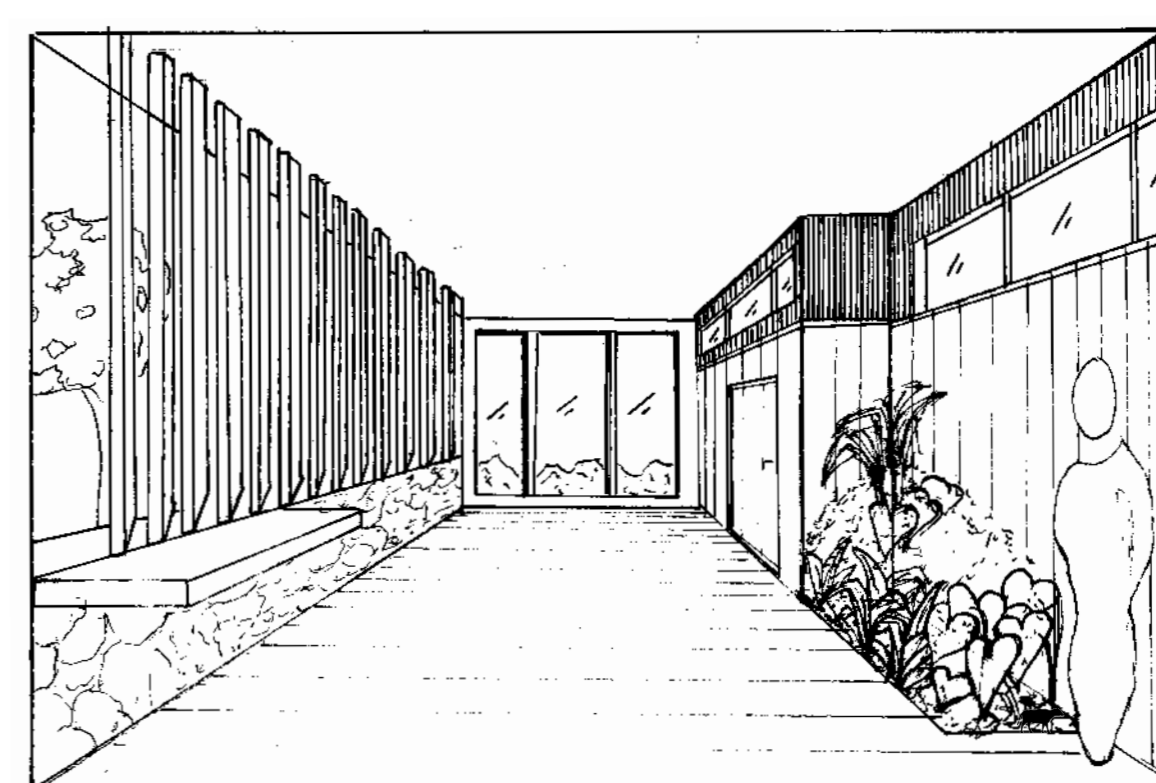
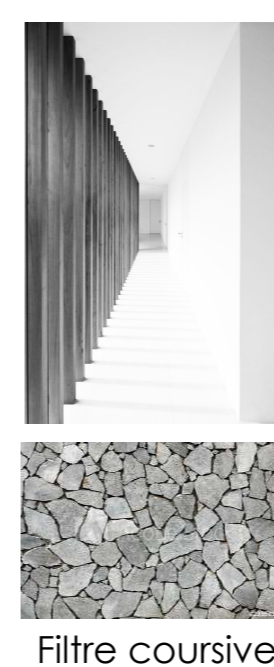
Plan RDC Logements T3 1/100°



Coupe AA Logements T3 1/100°

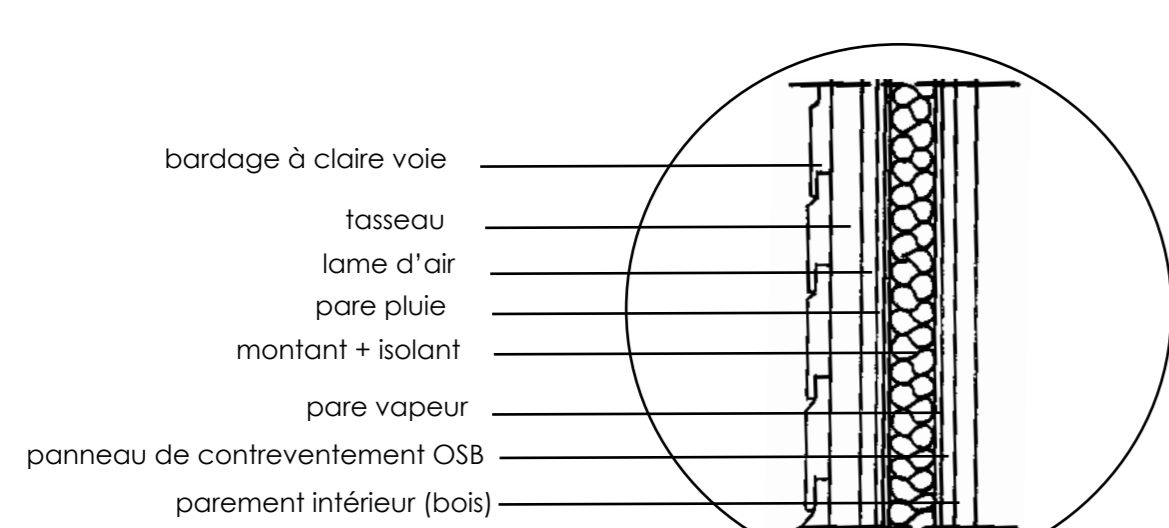


Vue 1 Espace Public

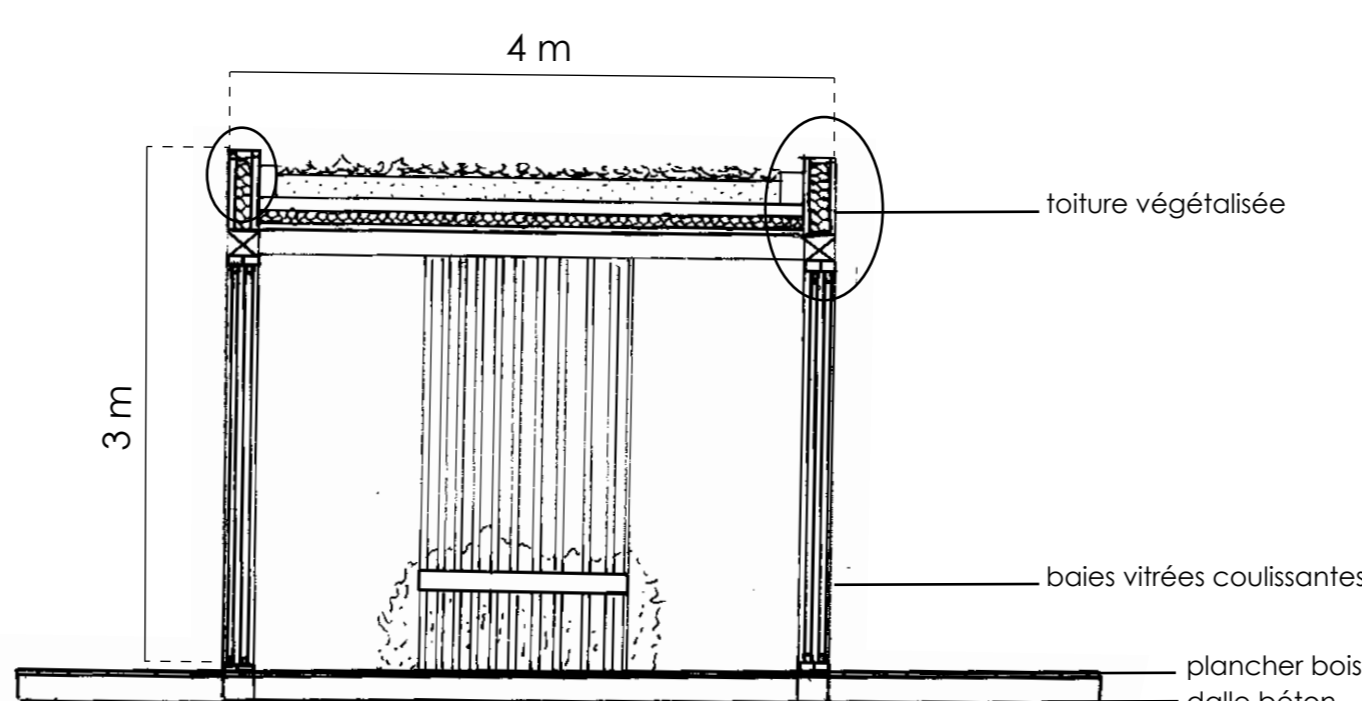


Vue 2 Course Centre Médical

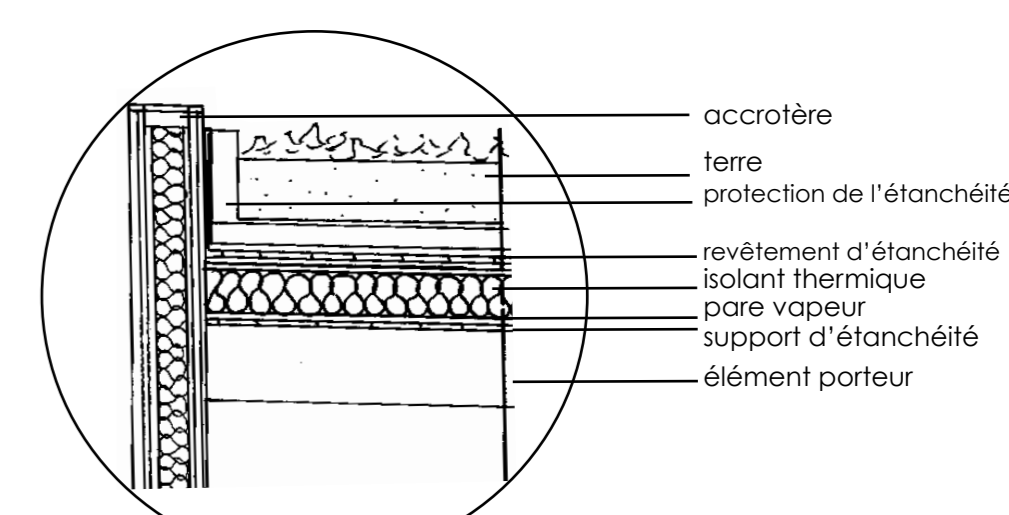
Perspectives d'ambiances



Composition du mur



Coupe de l'accueil / salle d'attente



Toiture végétalisée

Détails 1/50°