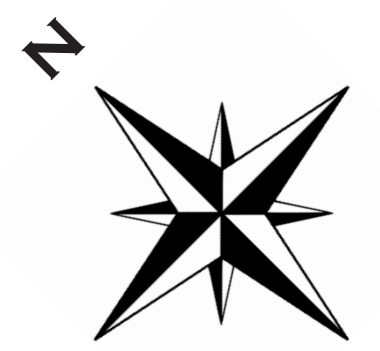
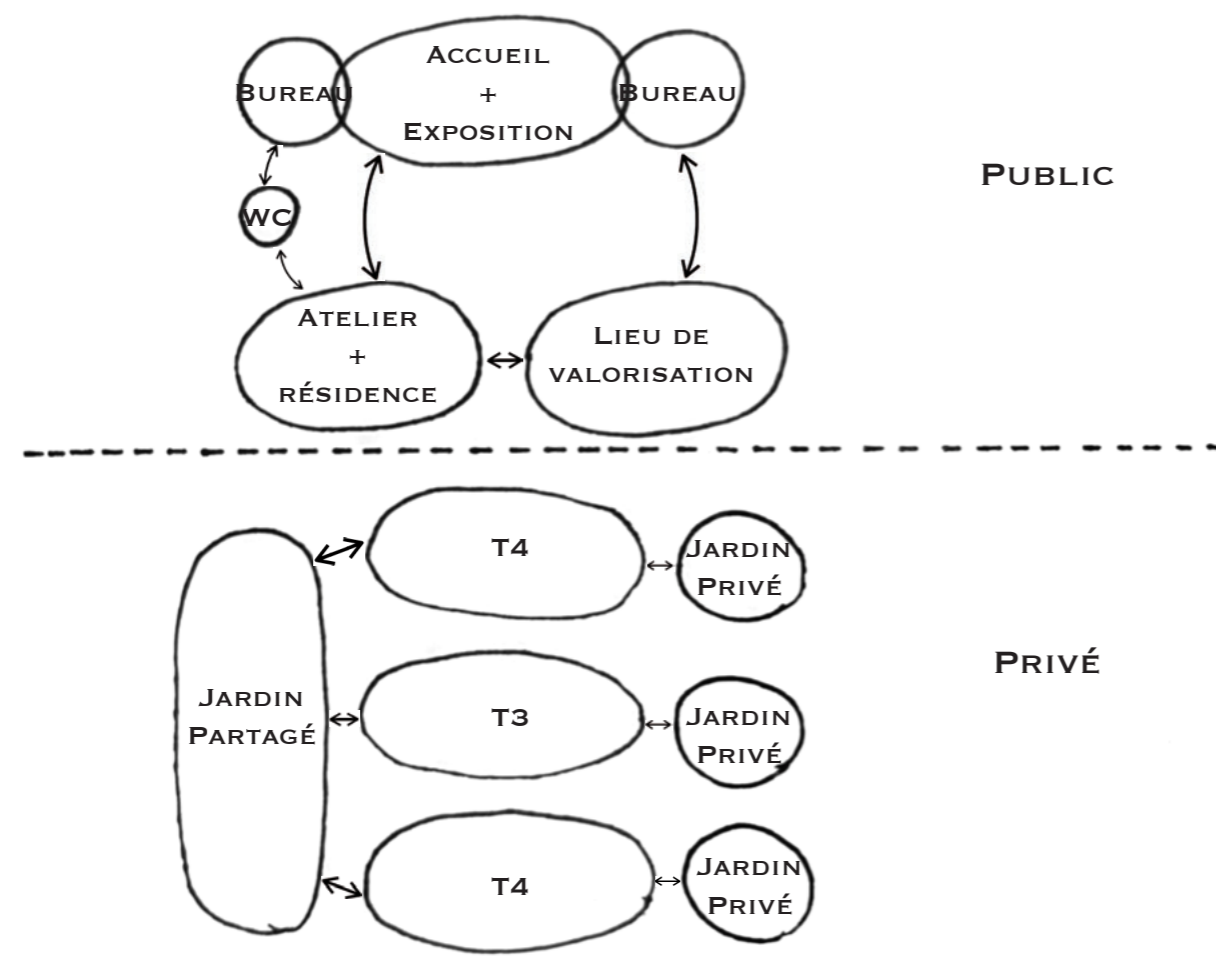


# LE REP'AIR

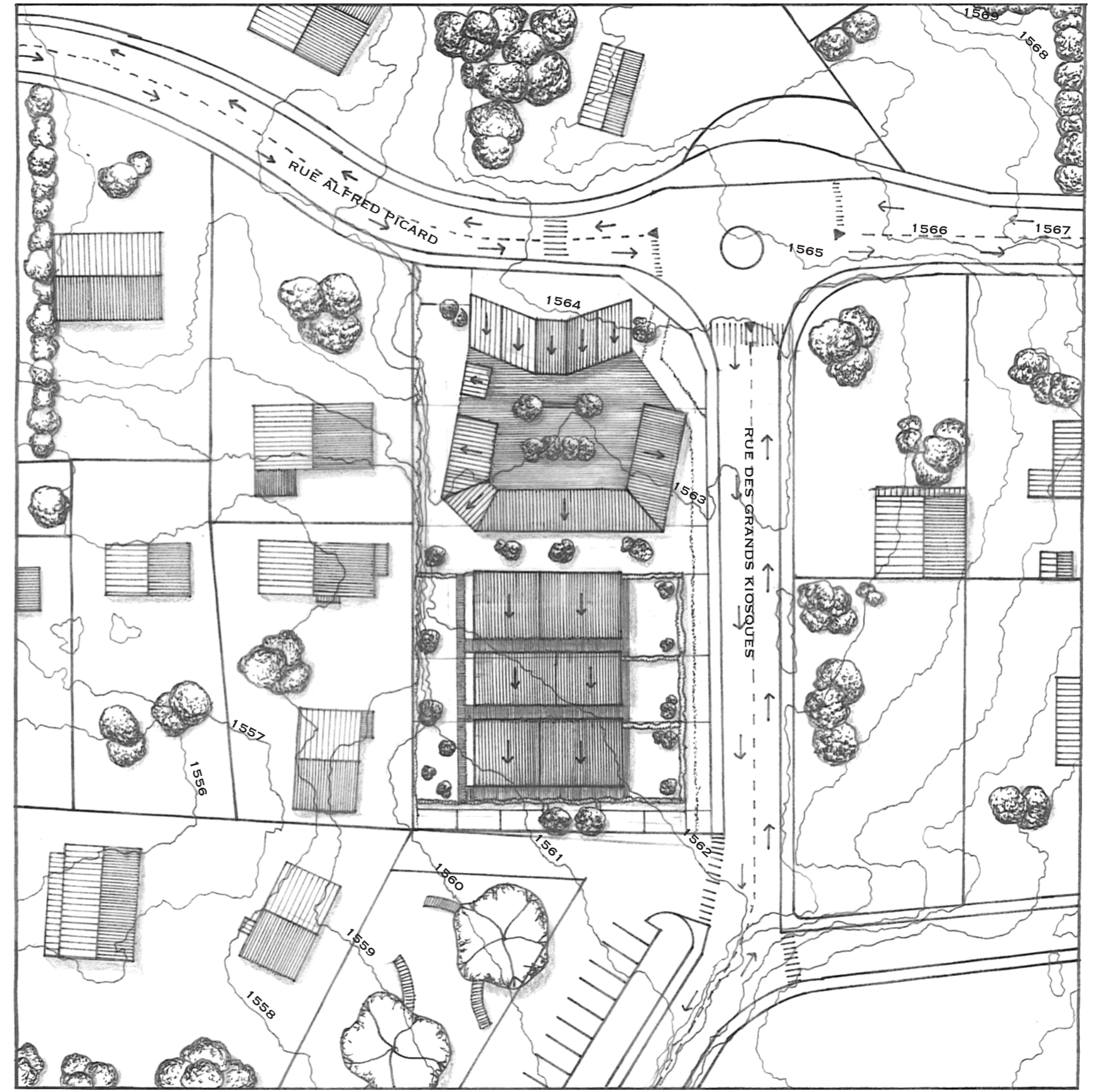
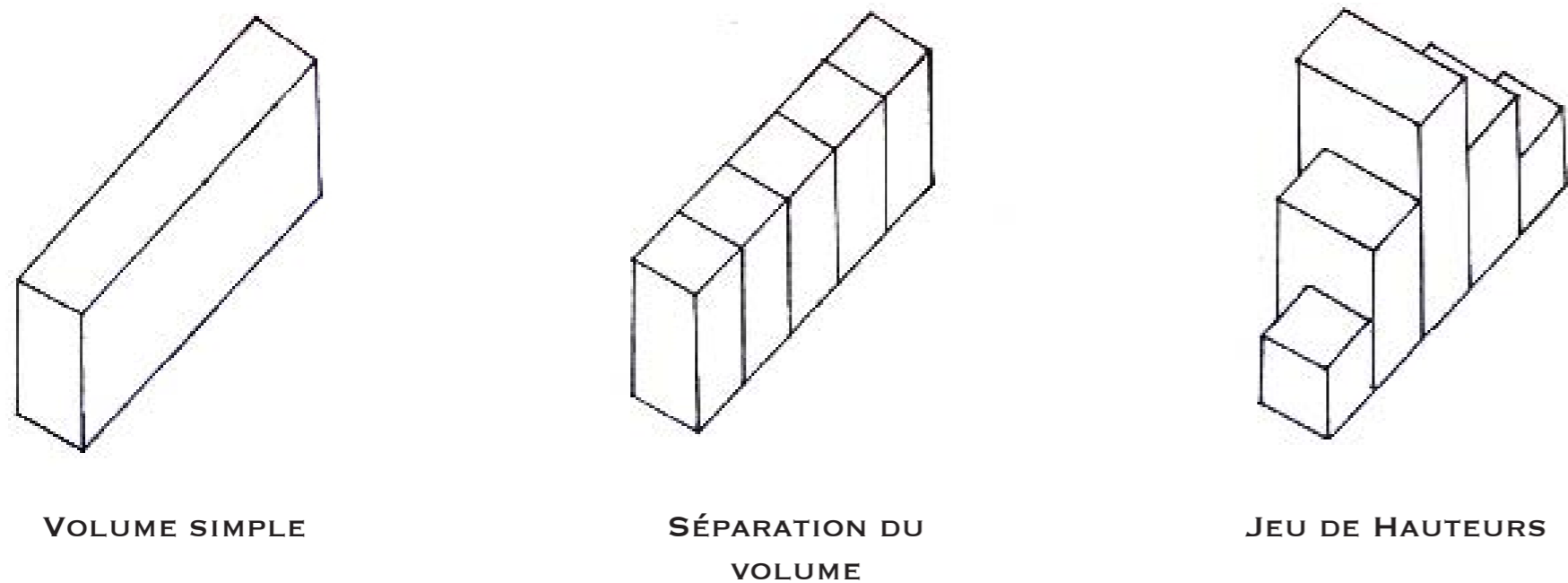
OFFICE DE TOURISME & HABITATS GROUPÉS



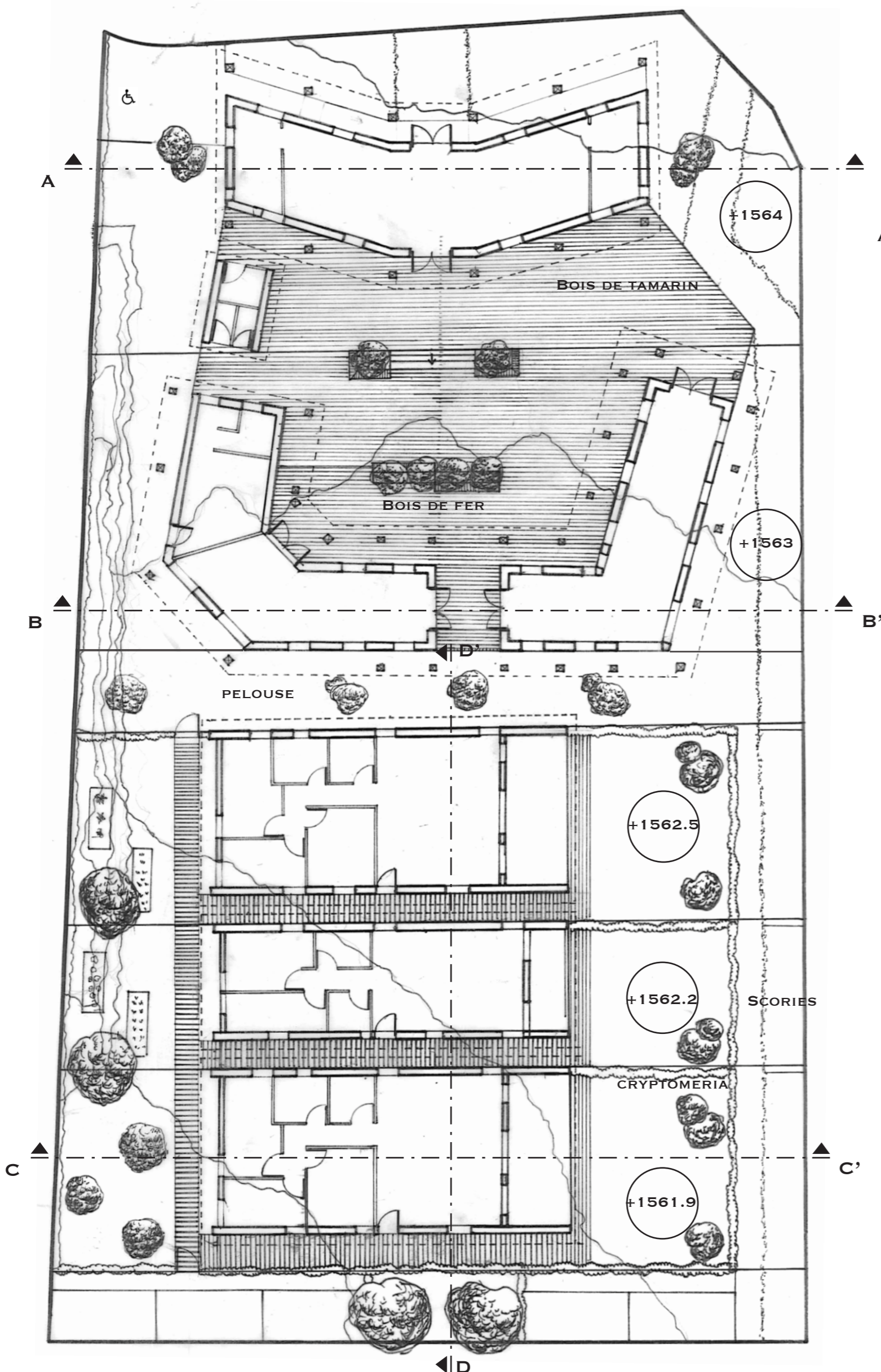
## ORGANIGRAMME



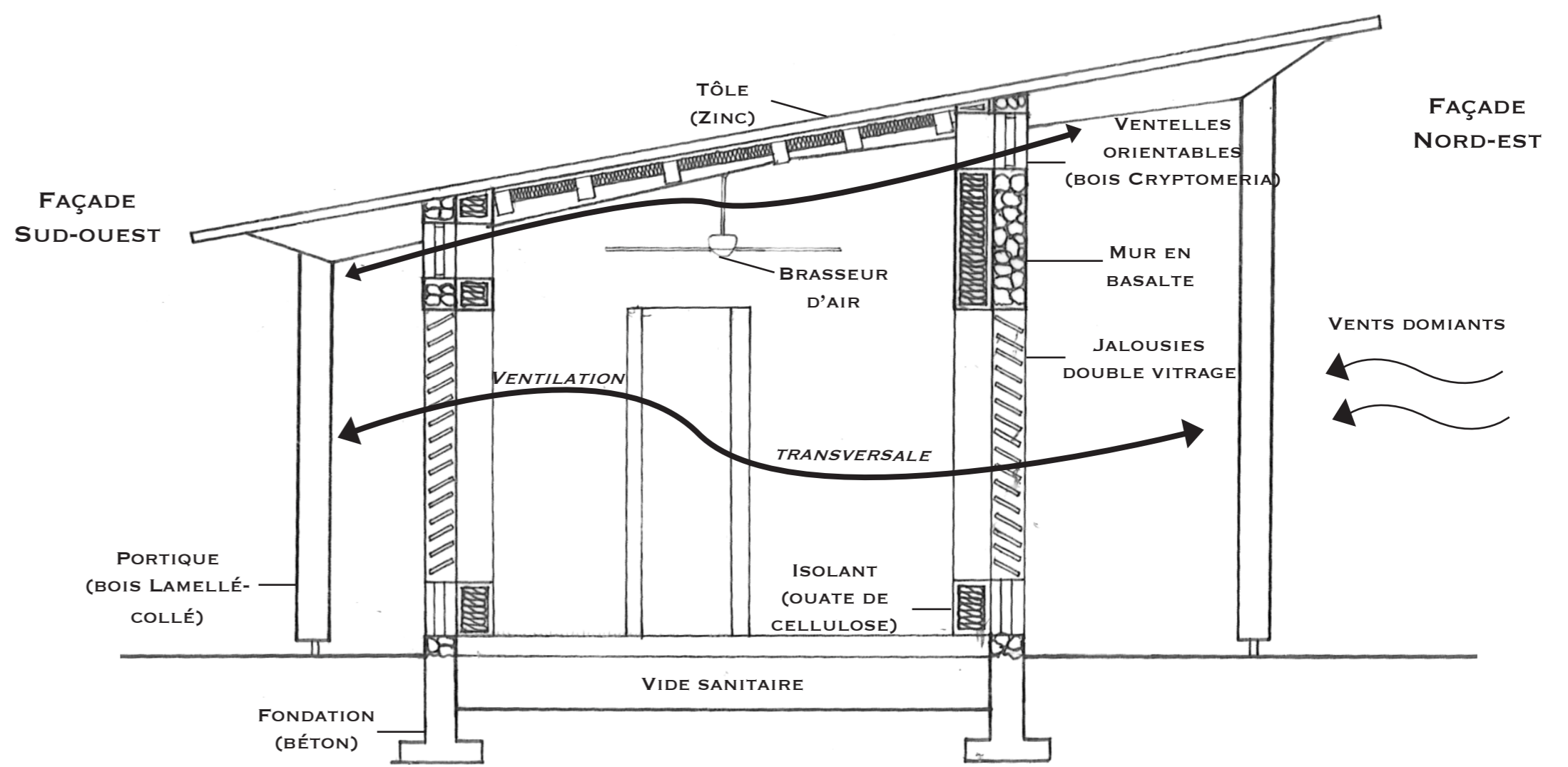
## SCHÉMAS DE CONCEPT



PLAN DE MASSE 1/500



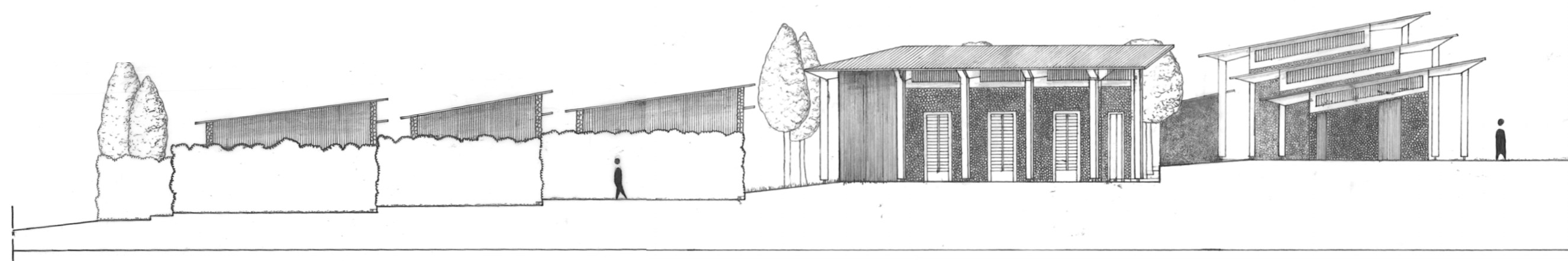
PLAN GÉNÉRAL 1/200



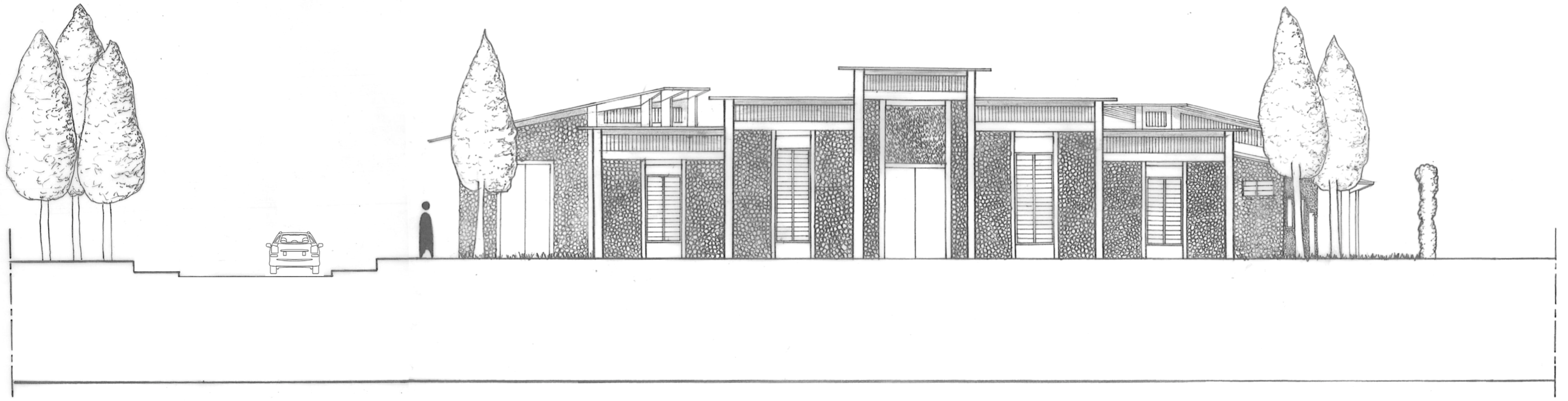
DÉTAIL CONSTRUCTIF 1/50



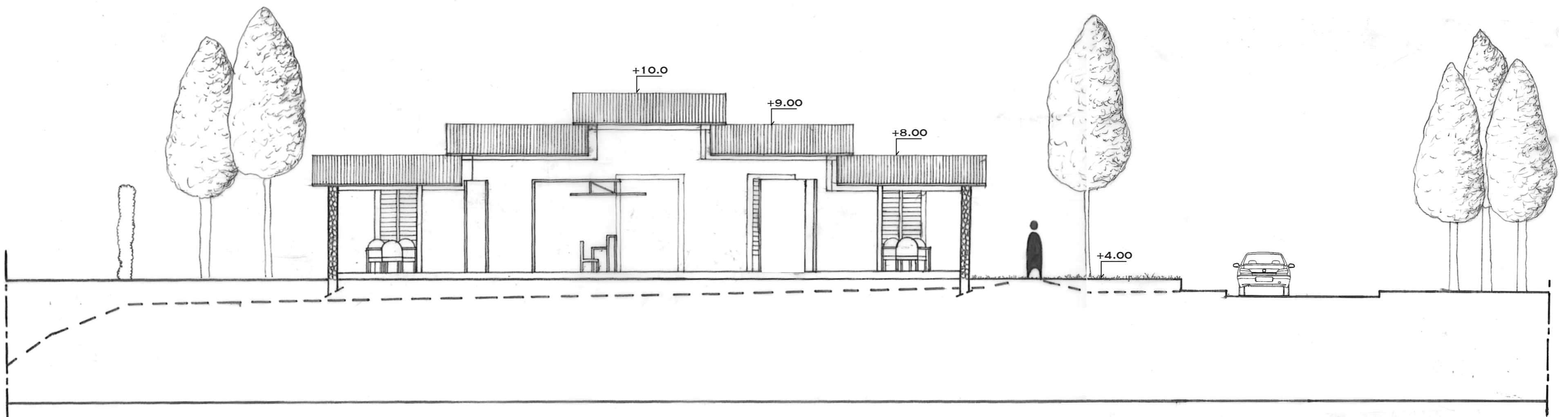
MATÉRIAUX



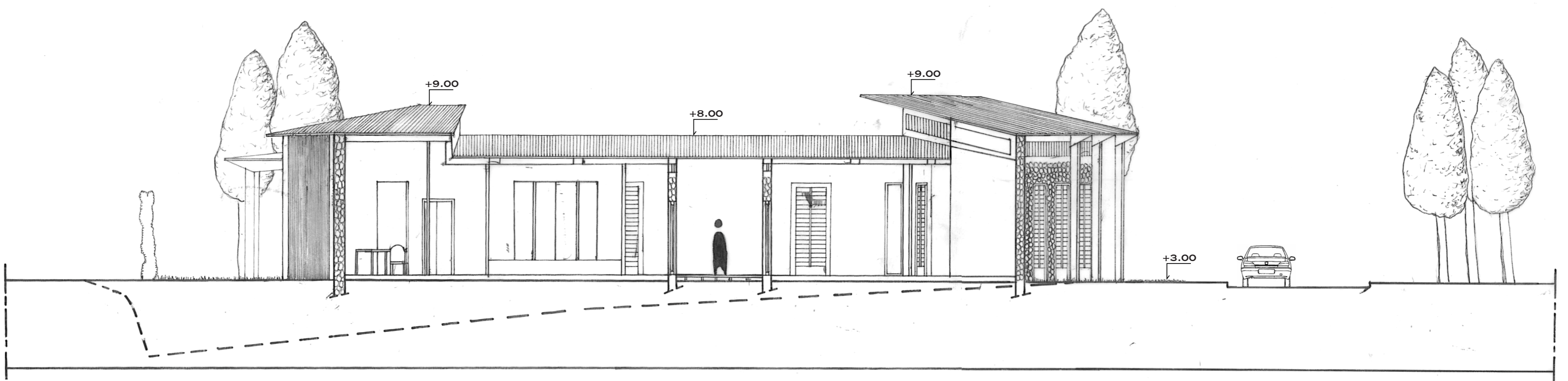
FAÇADE SUD-EST 1/200



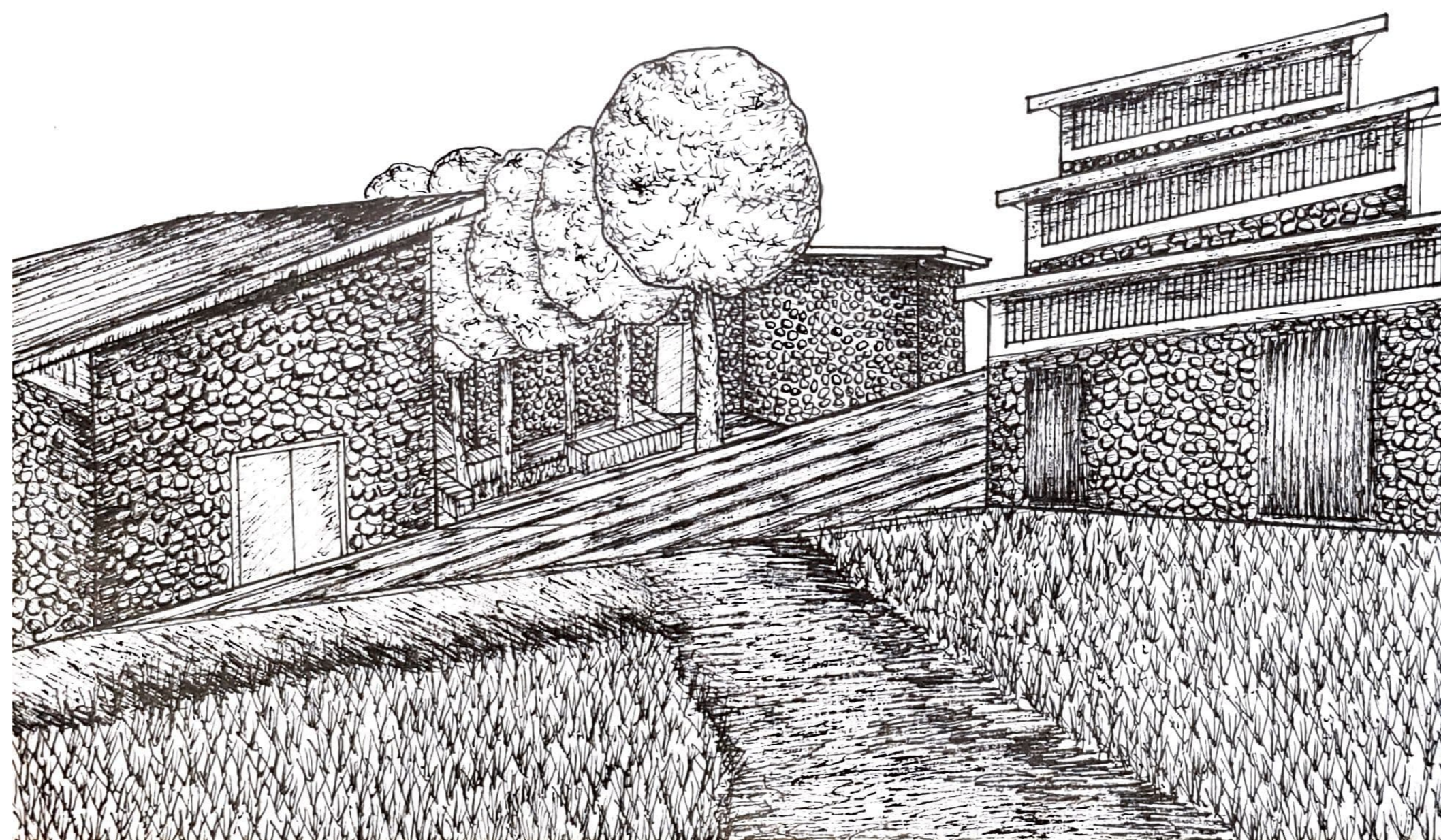
FAÇADE NORD-EST 1/200



COUPE AA' 1/200



COUPE BB' 1/200



VUE ① DEPUIS L'OFFICE DE TOURISME