

L'équipe :

Maître d'ouvrage : **Rectorat**

Architecte : **T & T architectes**

Economiste : **CIEA**

Bureau QE : **Imageen**

Bureau de structure : **INCOM**

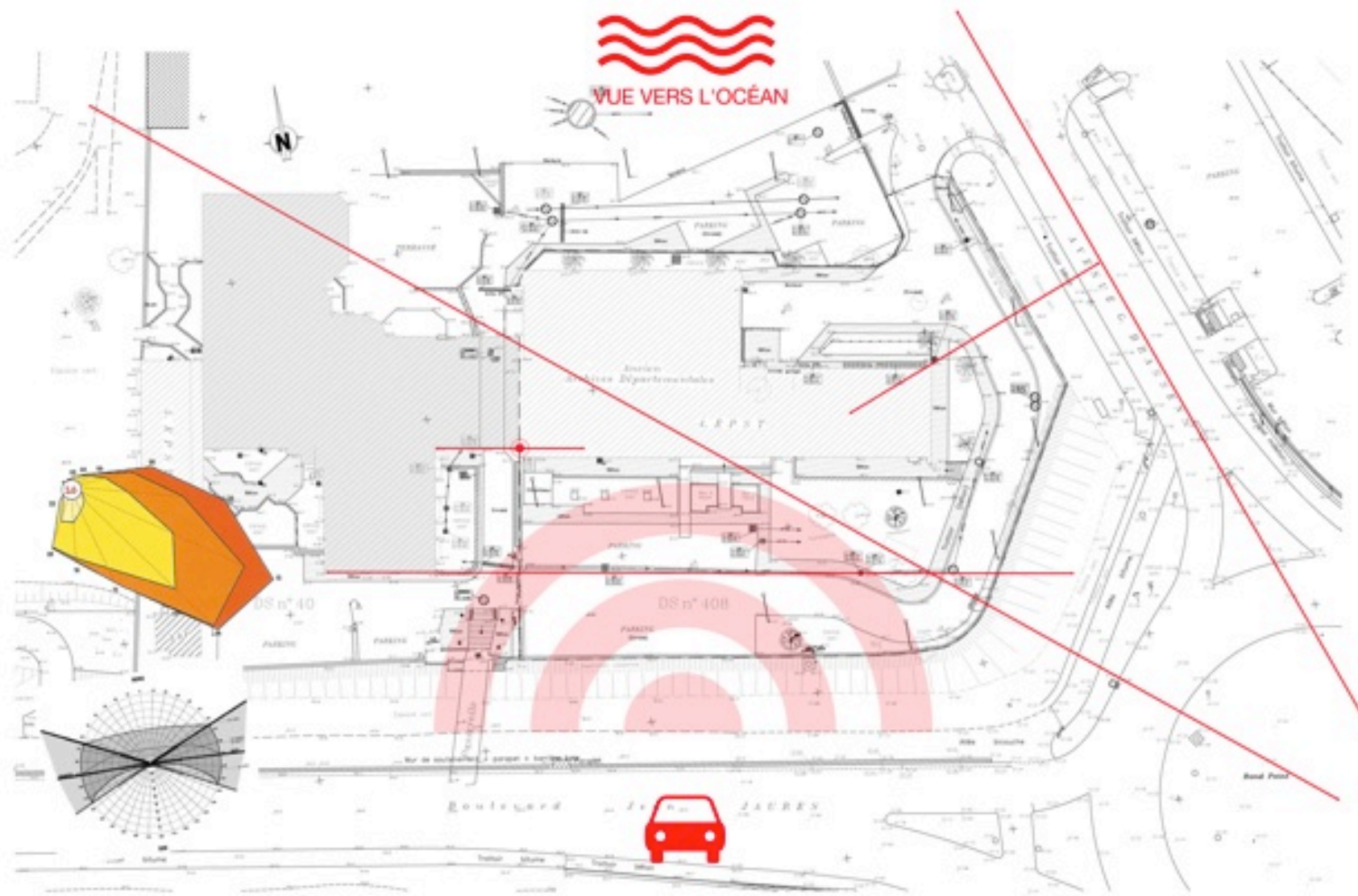
Fluides : **INSET**

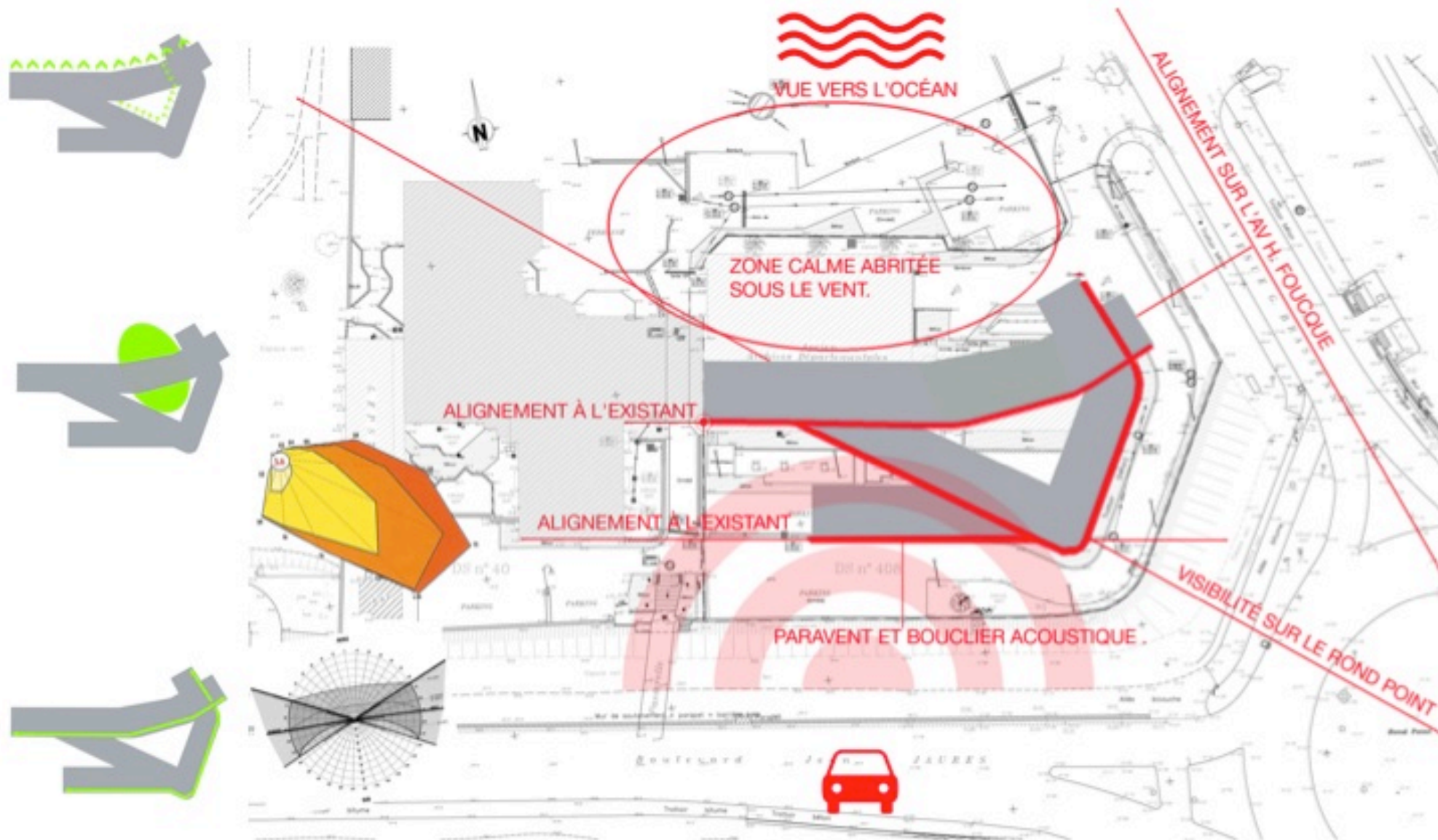
CROUS 97 logements étudiants



CROUS 97 logements étudiants

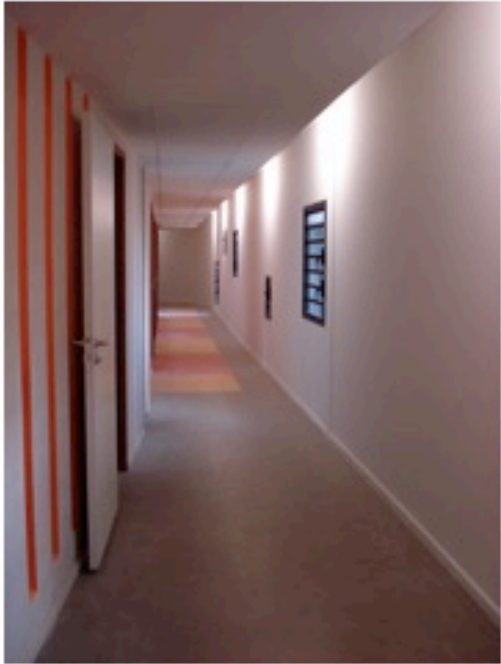
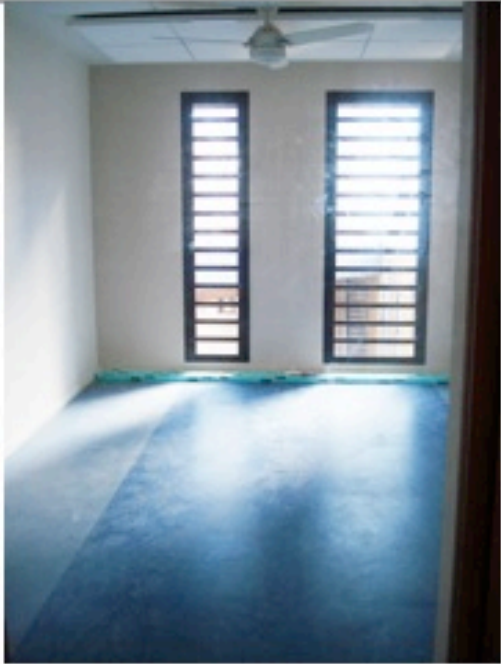
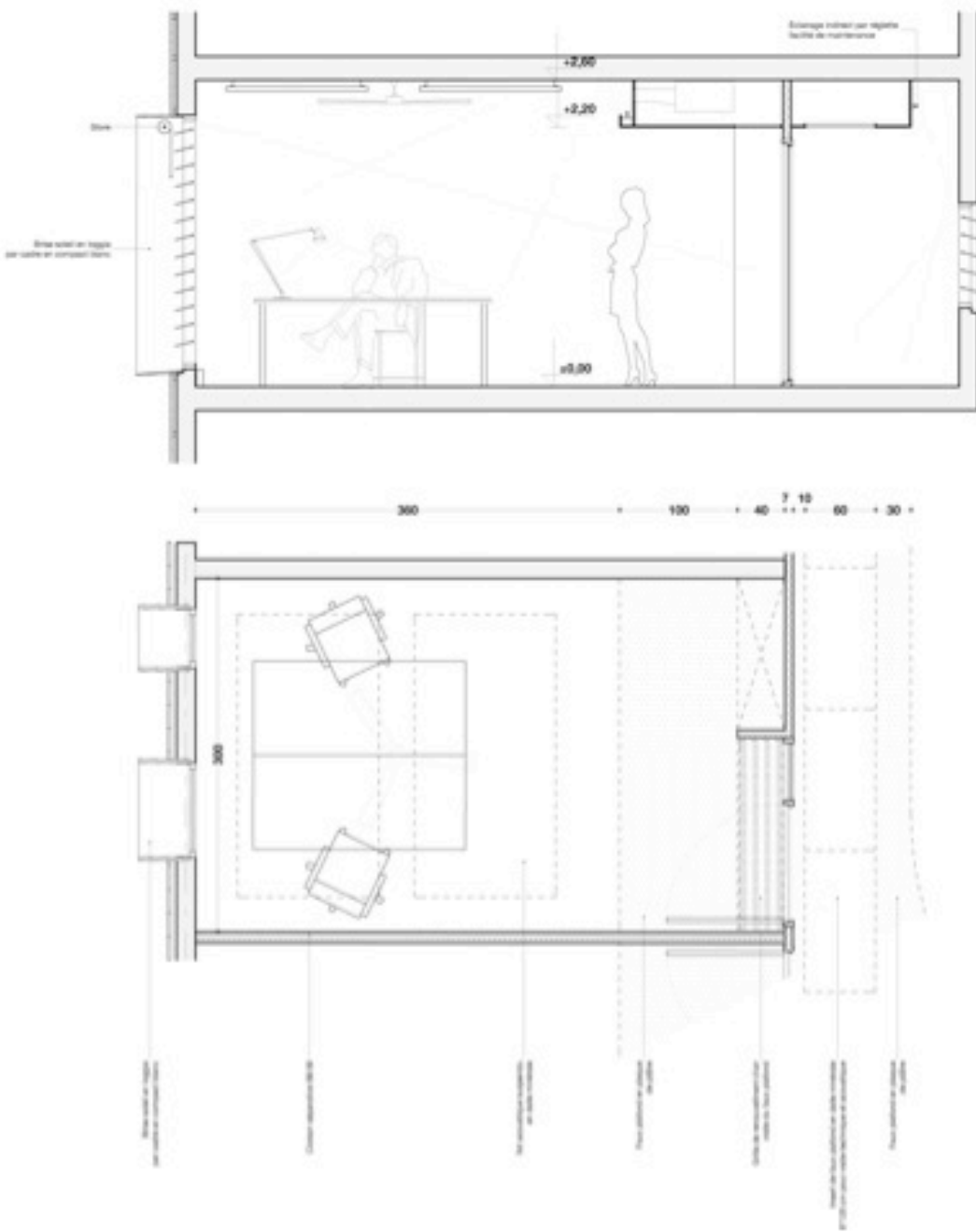


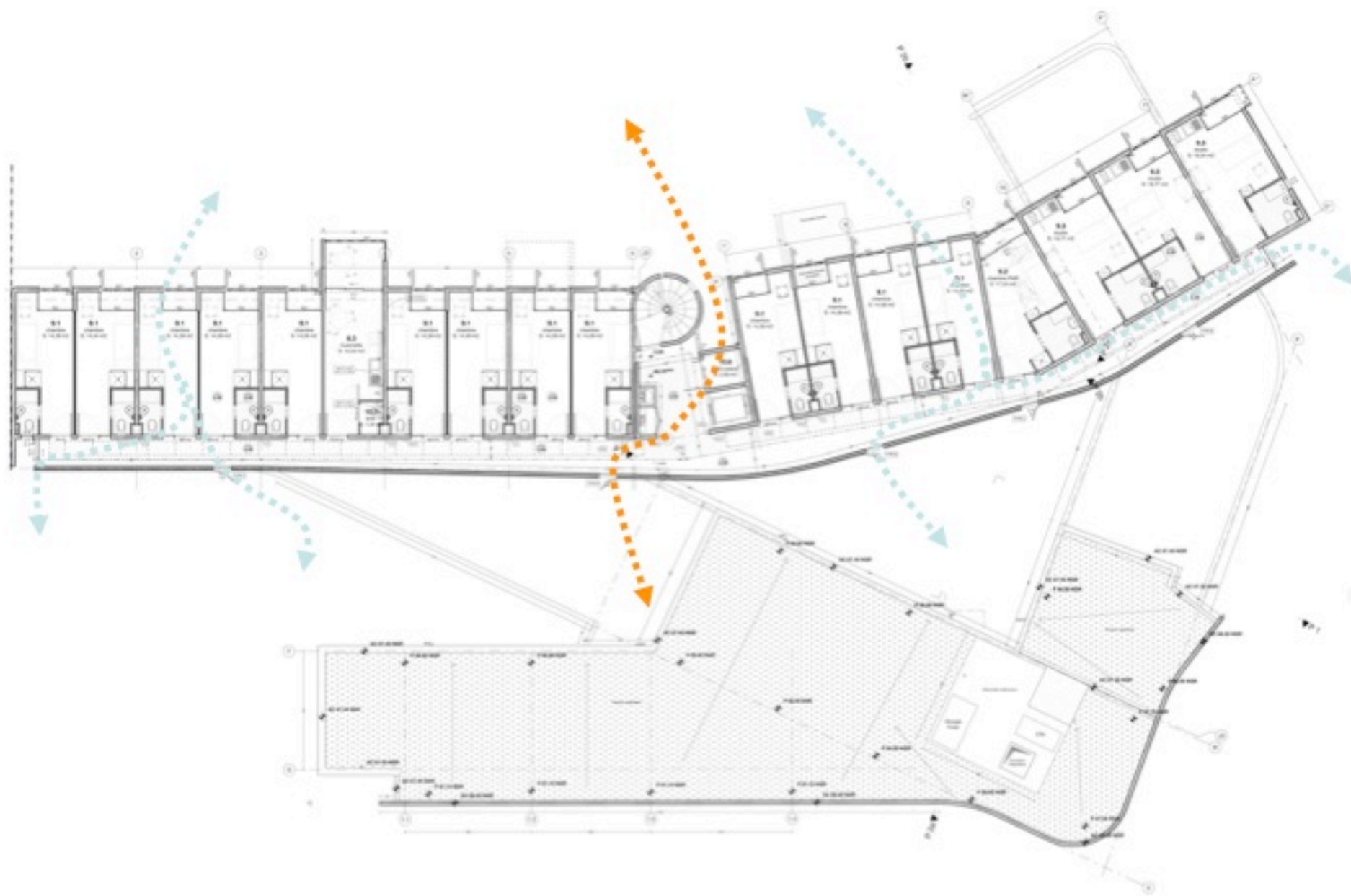


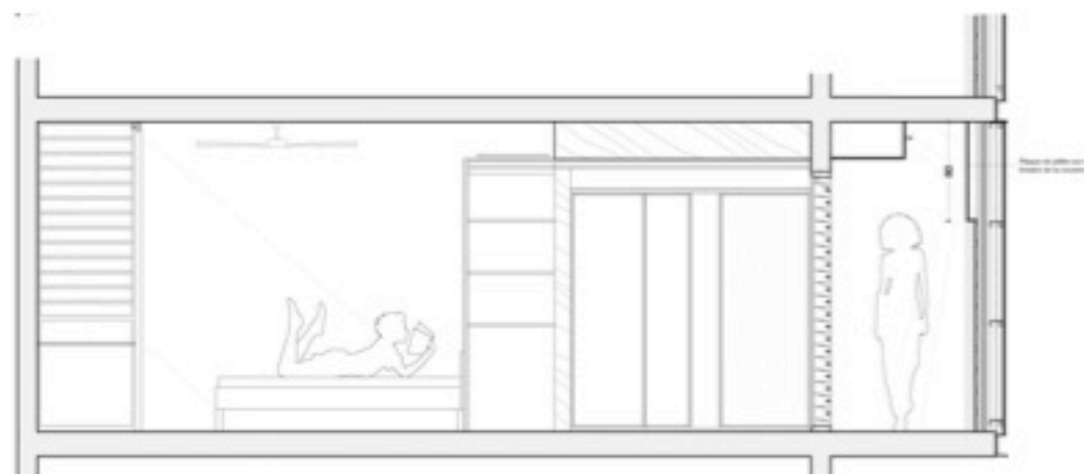
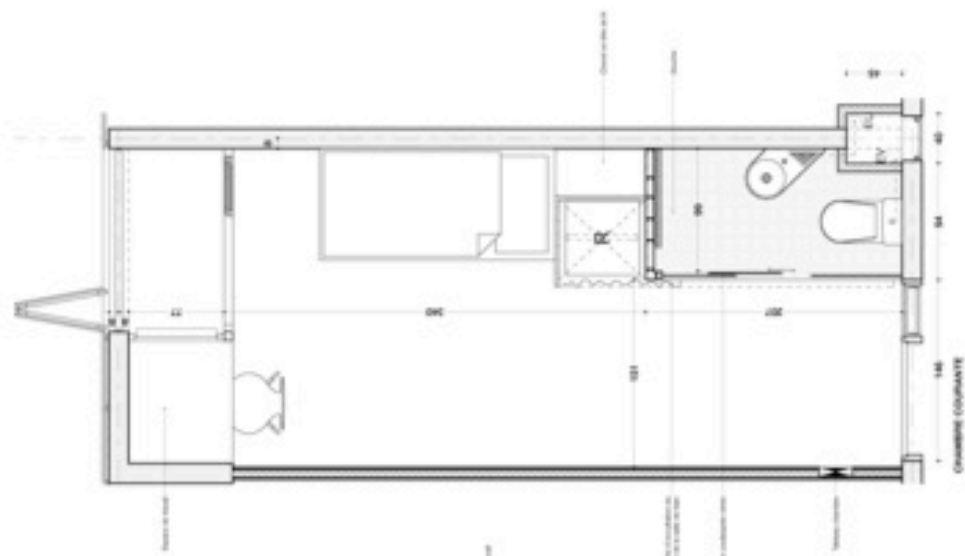




CROUS 97 logements étudiants

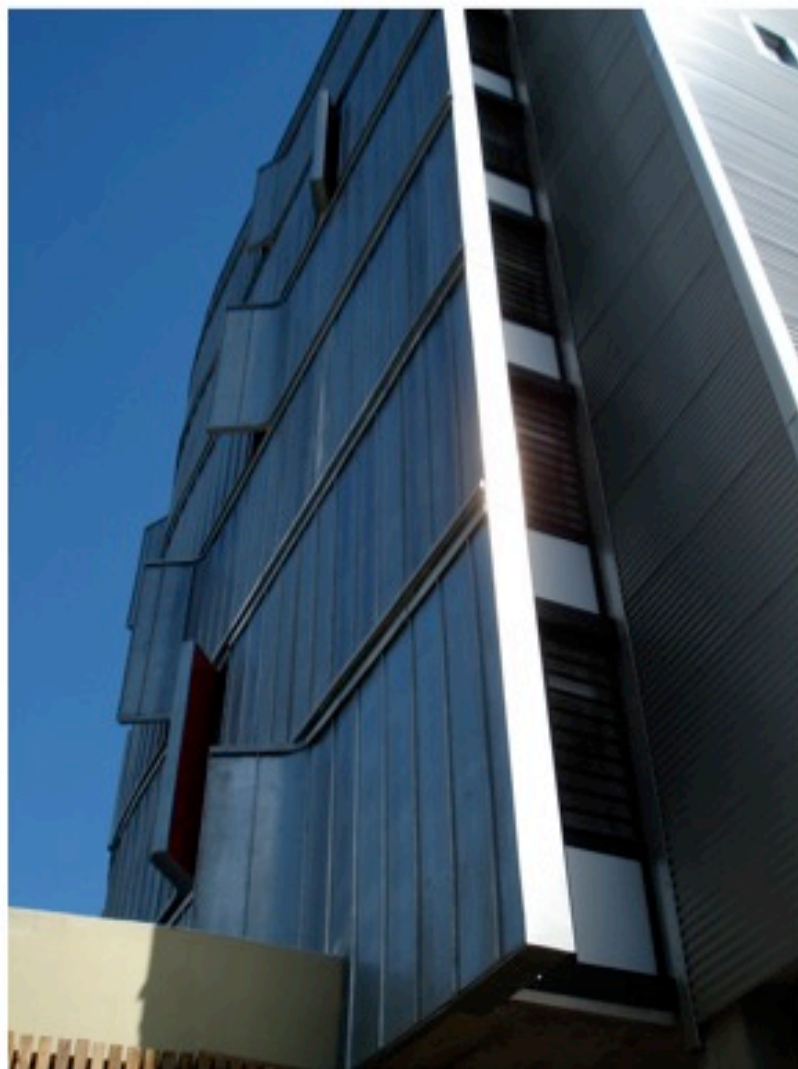






CROUS 97 logements étudiants







CROUS 97 logements étudiants





