

## OFFICES

---

### Small

---

based on one cabin **3m. wide**  
to the maximum length 12m.

### Medium

---

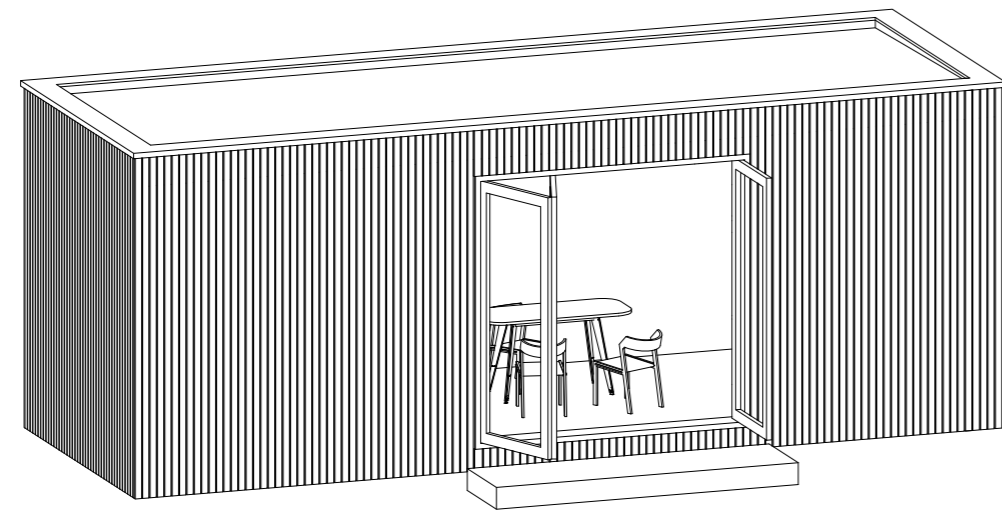
based on one cabin **3,5m. wide**  
to the maximum length 12m.

### Large

---

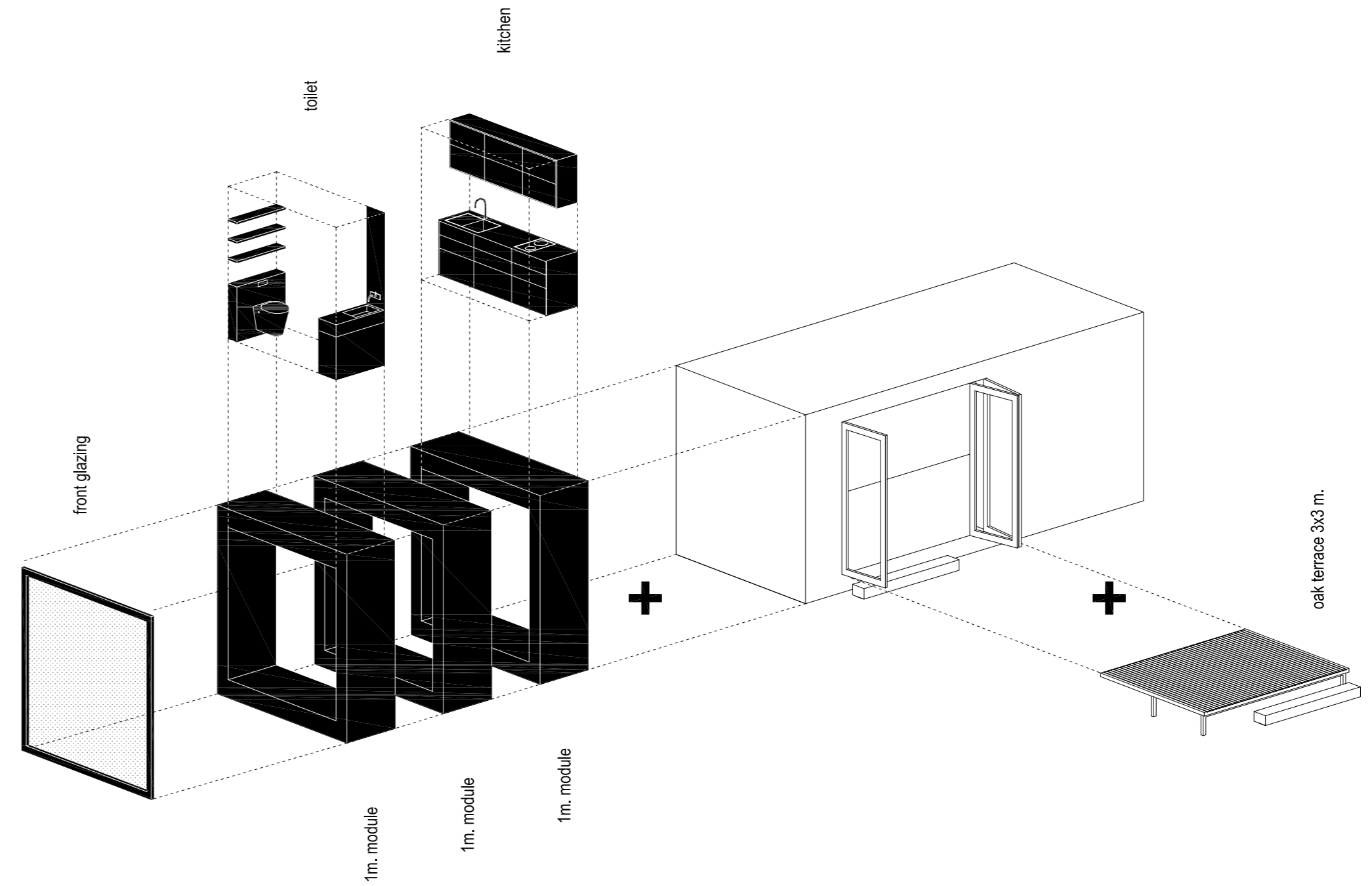
**combining 3,5m. wide** cabins



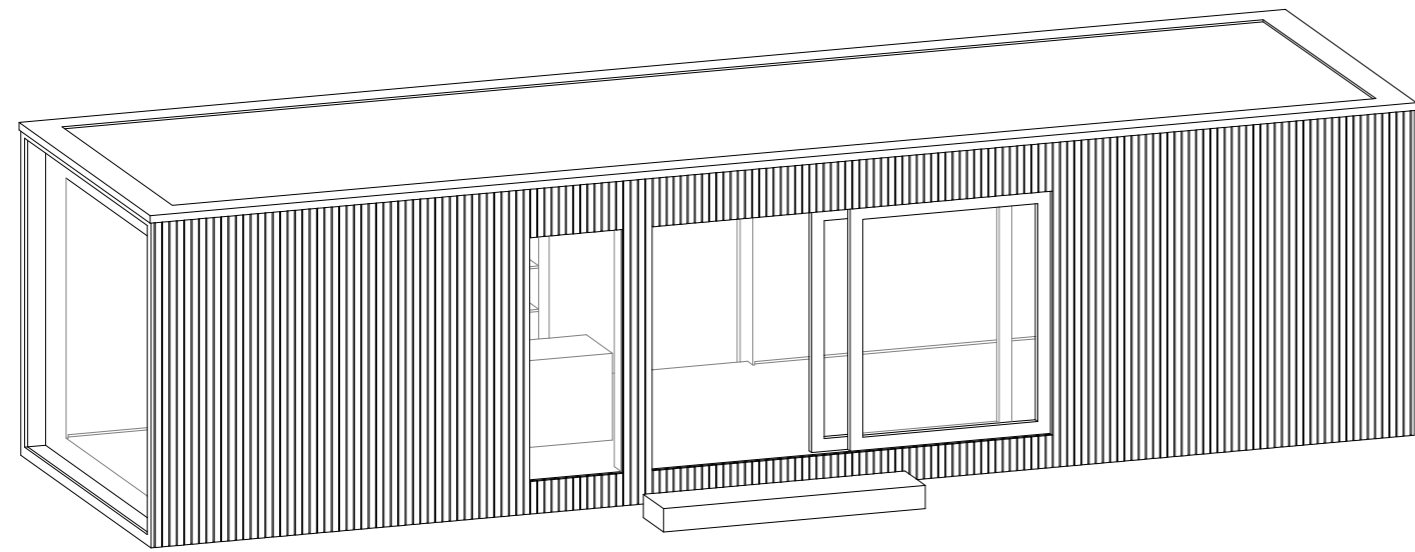


Small

based on one cabin **3m. wide**  
to the maximum length 12m.

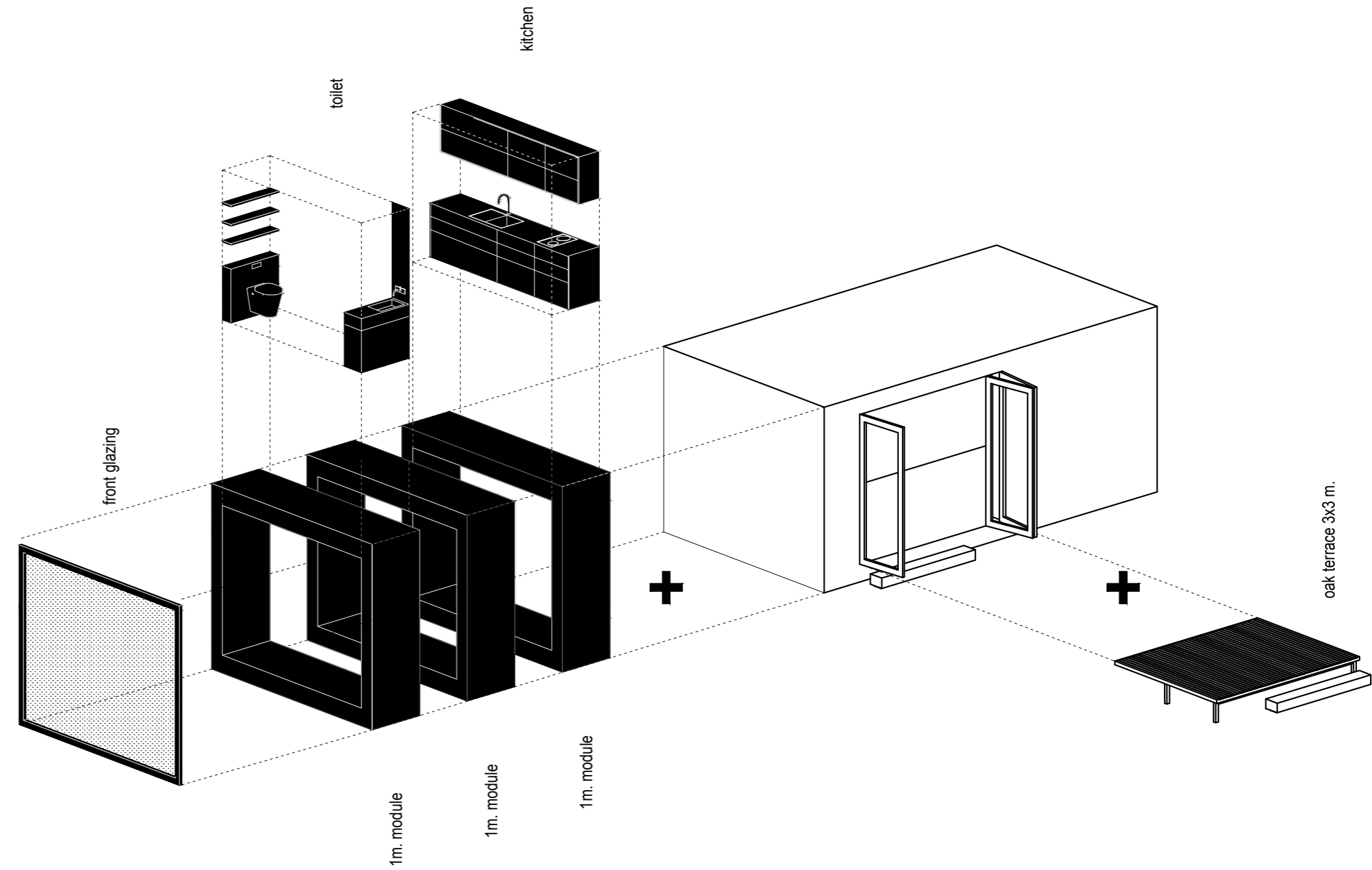






**Medium**

based on one cabin **3,5m. wide**  
to the maximum length 12m.

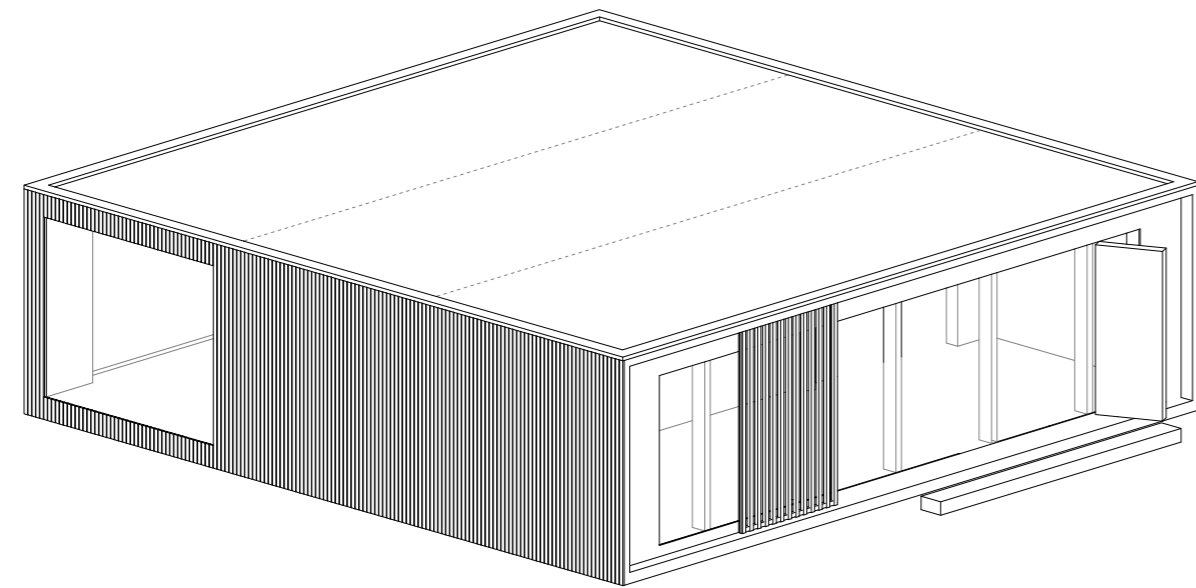






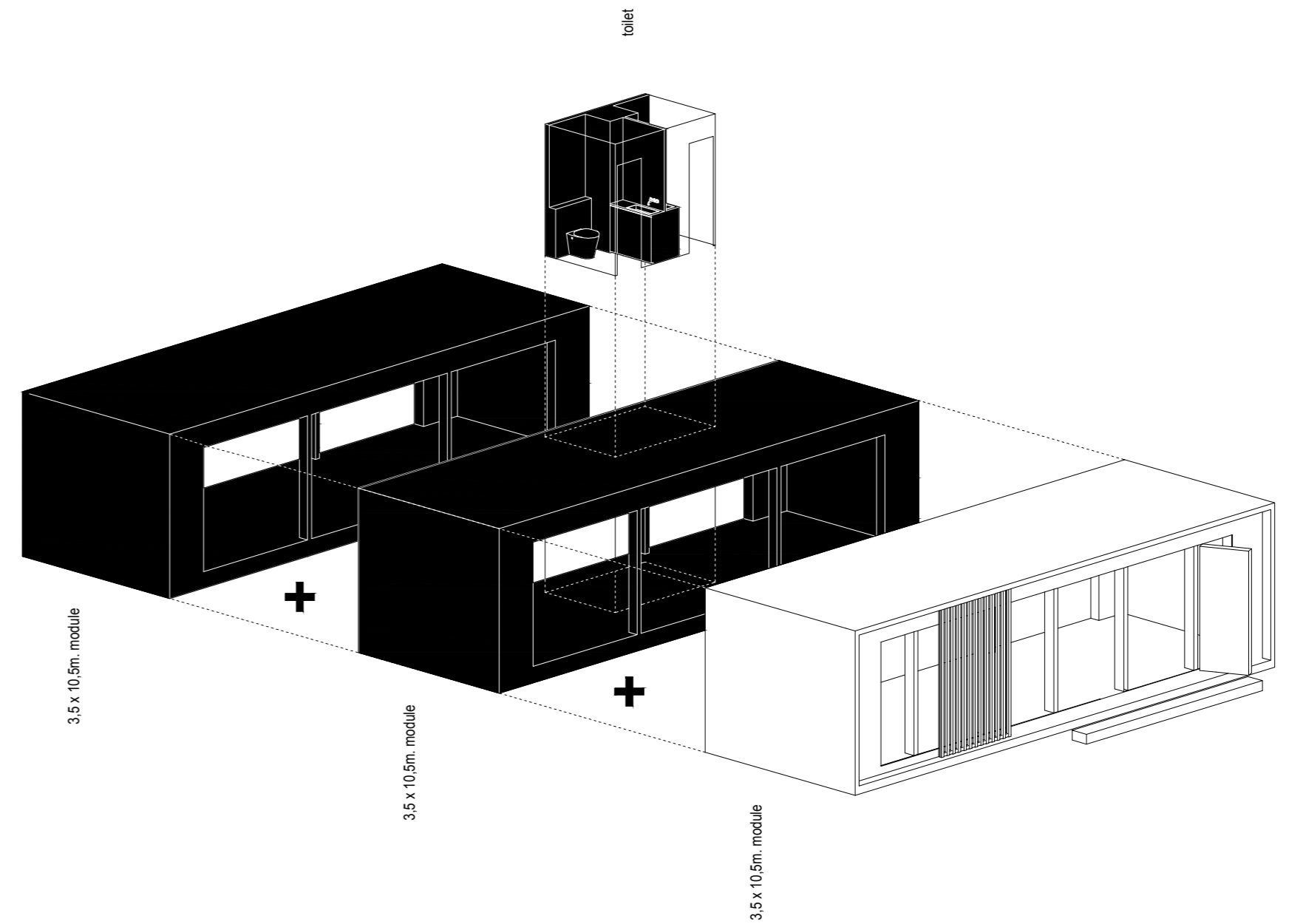






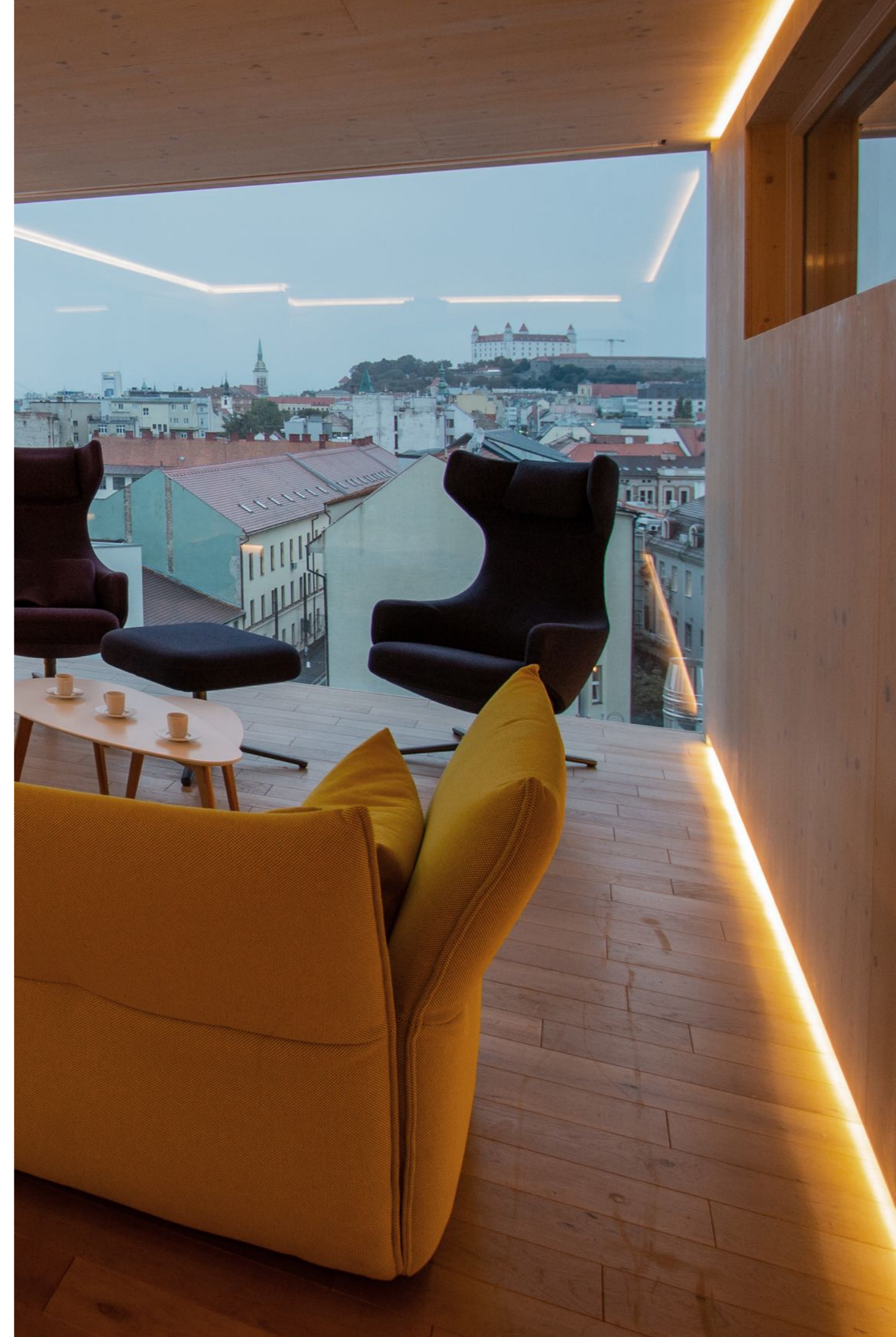
### Large offices

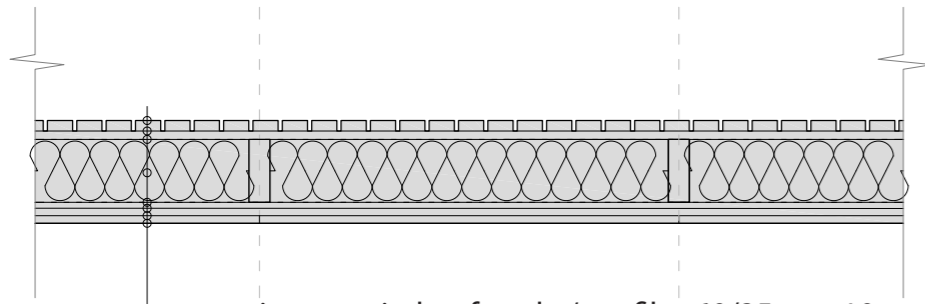
The L offices can be used as an extension of an existing building, placed on a roof or used as a solo building. Due to the sophisticated modular design, the portable cabins can either be used as individual units or in combinations for modular buildings. The easy assembly guarantees fast on-site installation and saves you time and money. The portable cabins are available in various sizes. As your company grows; your office space can also grow easily and fast.











pine tree timber facade / profiles 60/25 mm 10 mm gap /  
cross supporting timber  
hydroinsulation / delta facade sheet plus UV /  
thermal insulation Rockwool 160 mm.  
cross laminated timber / KVH -160 x 60 mm. /  
hydroinsulation sheet  
timber mesh plate / OSB 15 mm. /  
cross netting sticks / 25 mm. /  
cross laminated timber plate-bioplade / 19 mm. /

## general specifications

---

### materials

interiour / pine tree bioplade - walls and ceiling, floor in oak, furniture in oak and pine bioplade /  
exterior / facade - pine tree or thermowood, terrace - oak or thermowood, roof - EPDM foil /

### structure

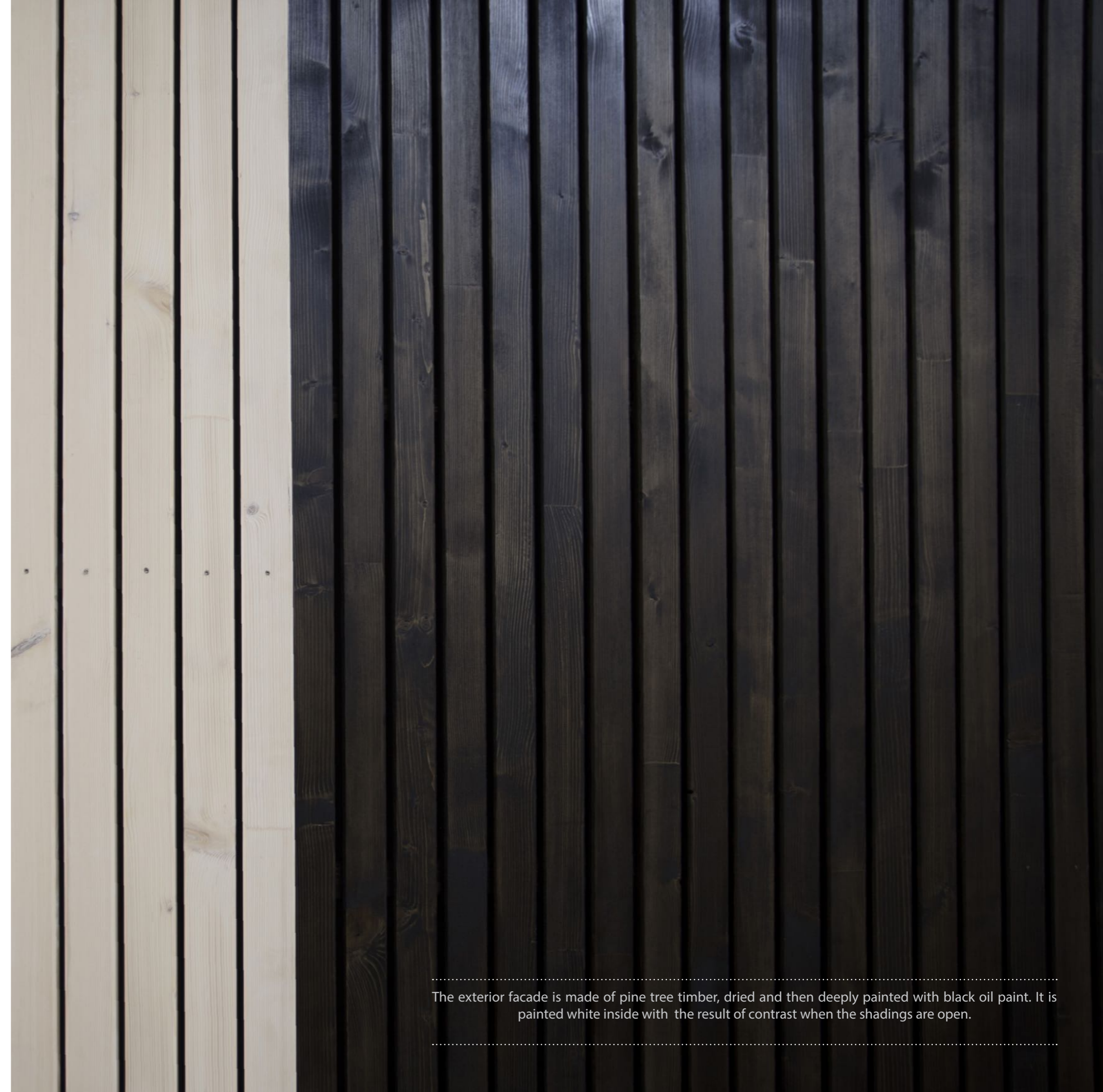
skeleton / crosslaminated timber frames /  
insulation / rockwool  $\lambda D = 0,035 \text{ W.m-1.K-1}$  in horizontal layers 240mm. and vertical 160mm. /  
glazings / front glazing - double glass 10+16+8 mm. /  
foundations / prefabricated plates or ground screws /

### technology

heating / fireplace or electric infra panels /  
ventilation / electrical ventilation for the bathroom and toilet /  
sewage / case by case : grid connection, septic tank, chemical toilet or dry toilet /

### out of grid

electricity / solar panels with batteries /  
water / tank to collect rain water with 3 times filtration before use /  
sewage / septic tank, chemical toilet or dry toilet /



---

The exterior facade is made of pine tree timber, dried and then deeply painted with black oil paint. It is painted white inside with the result of contrast when the shadings are open.

---

---

Interested ?

Find your place. Point your finger where you want it.

---

tel. : +32 472 784 510 / [info.arkshelter@gmail.com](mailto:info.arkshelter@gmail.com)