

Maubeuge

Redynamisation du centre ville



Les provinces françaises
Le nouveau parc habité de la ceinture urbaine



Années 1960

10ha

1900 habs

2% de la population

Plan d'urbanisme Lurçat 1947

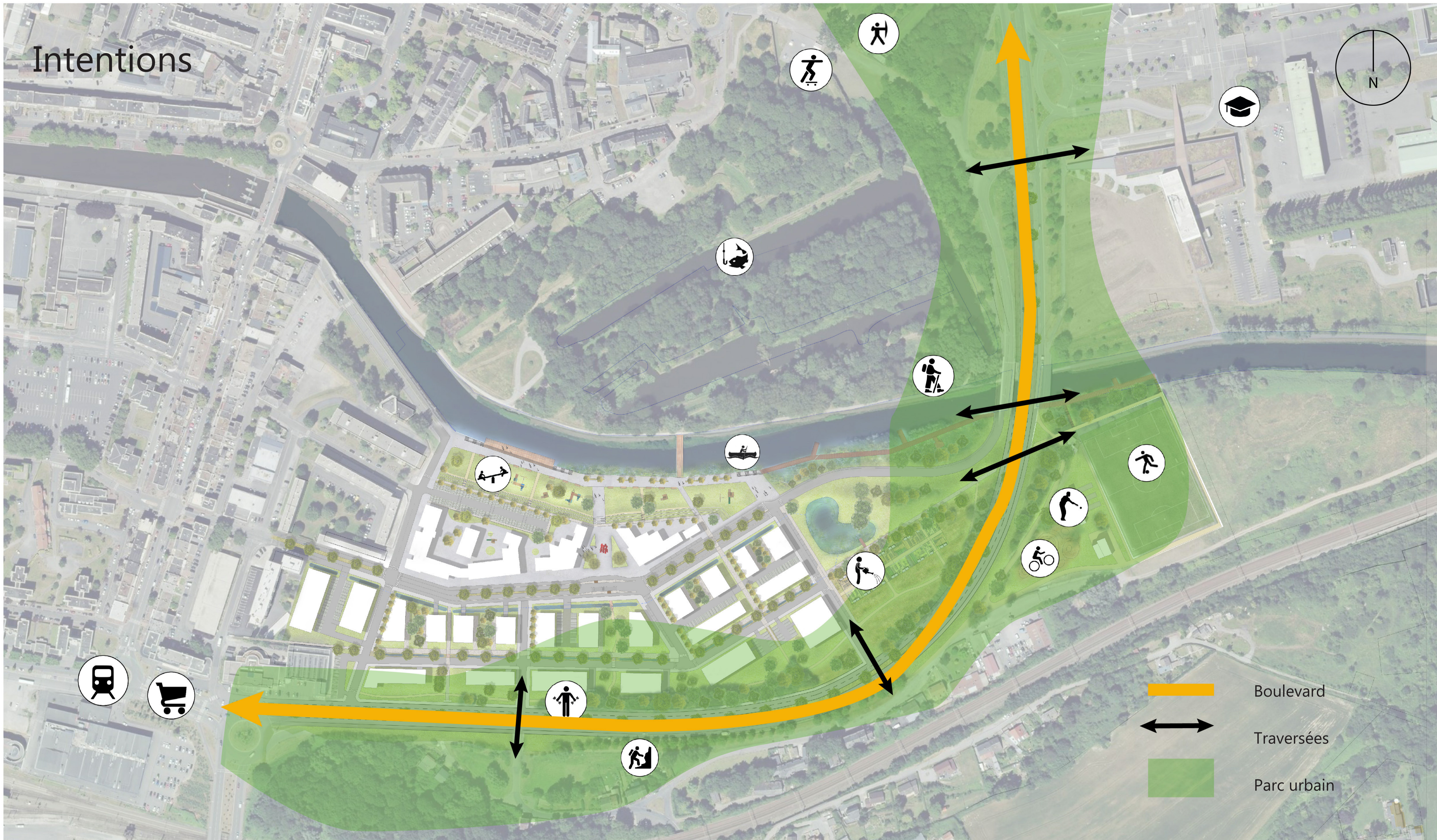


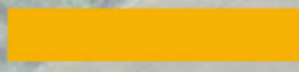
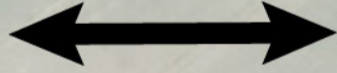

Plan d'aménagement 1947

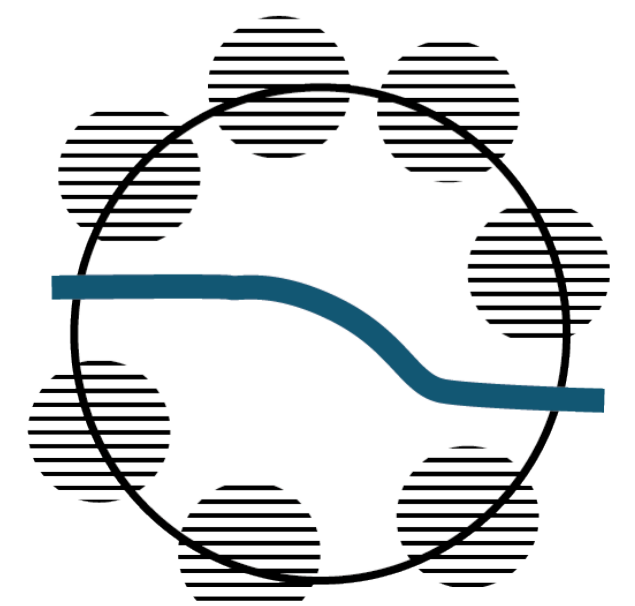


Photo aérienne 1950-1965

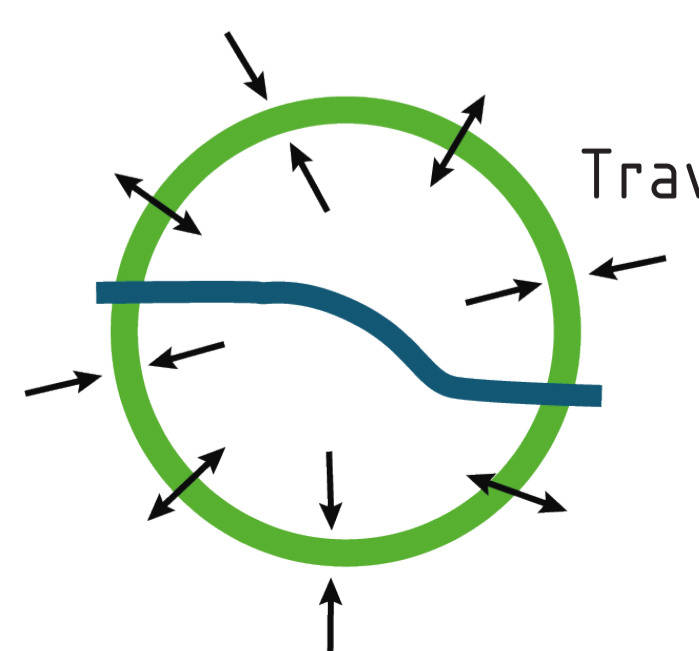
Intentions



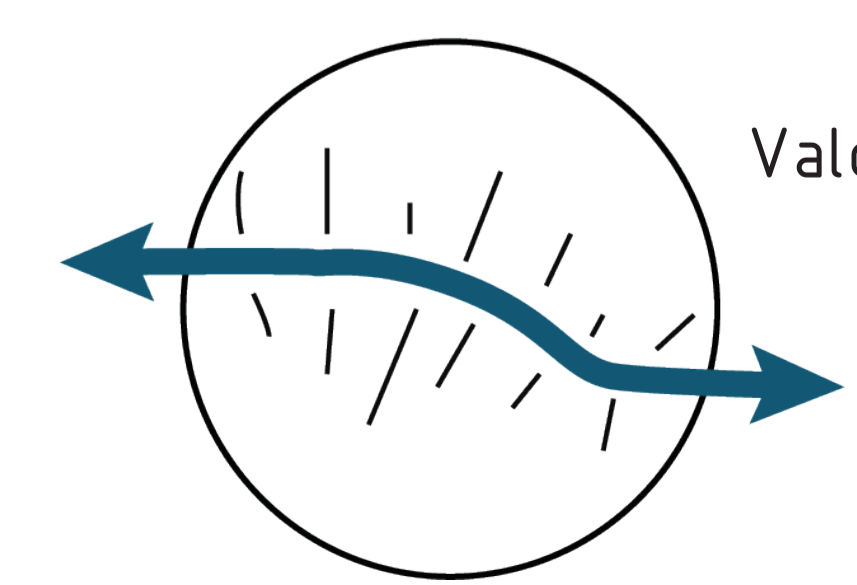
-  Boulevard
-  Traversées
-  Parc urbain



Polarité

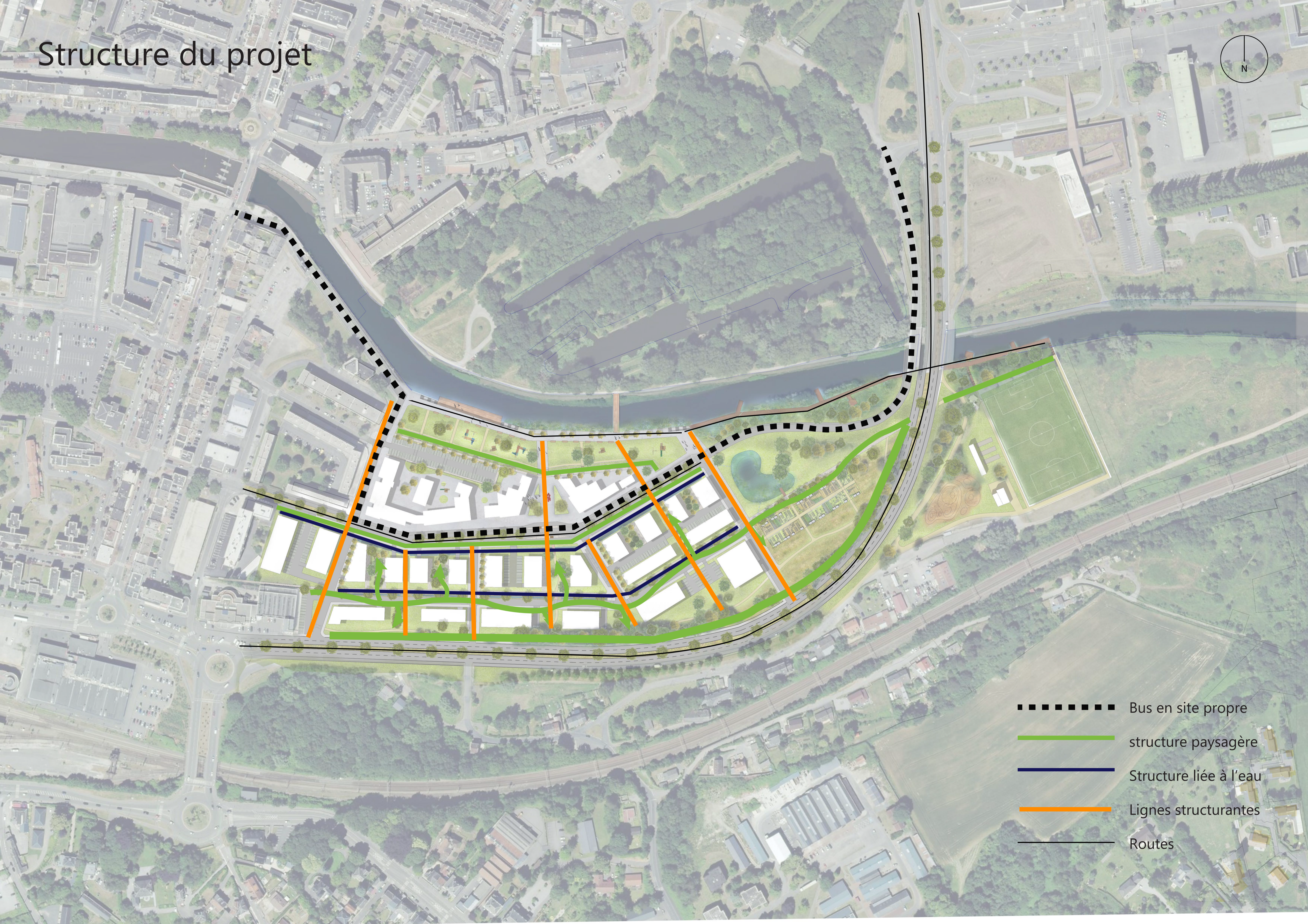


Traverser/connecter



Valoriser

Structure du projet



- Bus en site propre
- structure paysagère
- Structure liée à l'eau
- Lignes structurantes
- Routes



Les provinces françaises
Le nouveau parc habité de la ceinture urbaine

Aménagement des bords de Loire / Roanne



Îlot du Stade / Meyrargues



Marais de condette / Condette

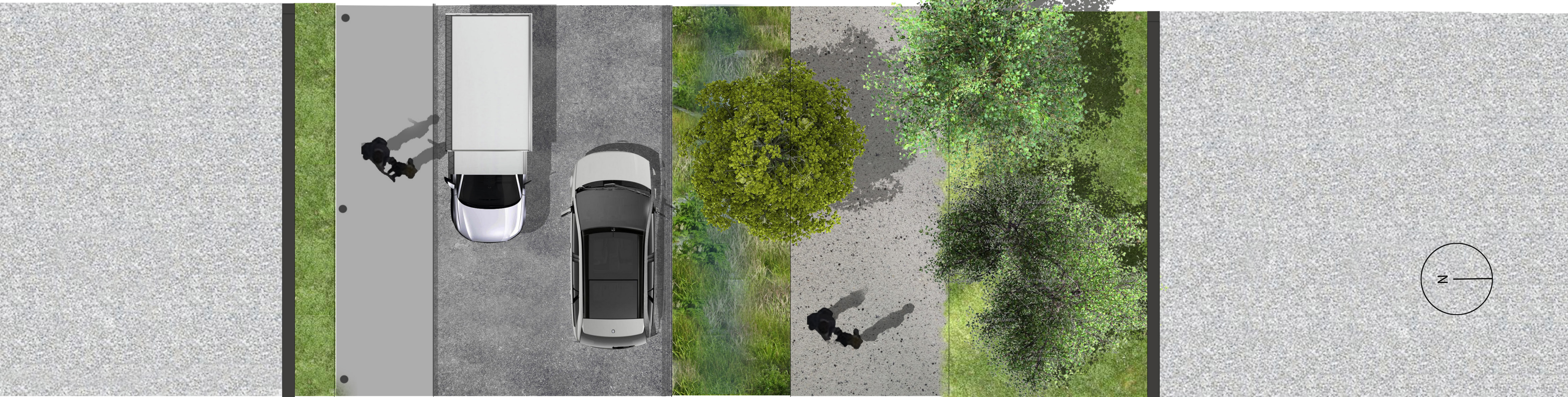


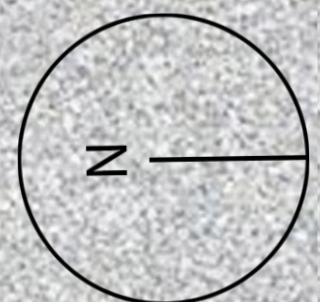
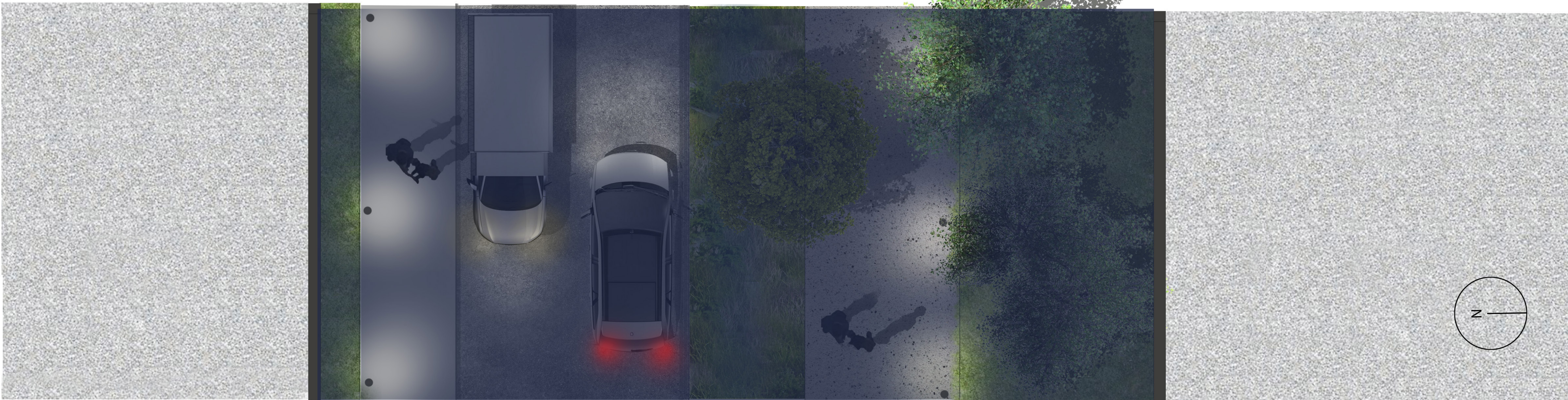
Plantation



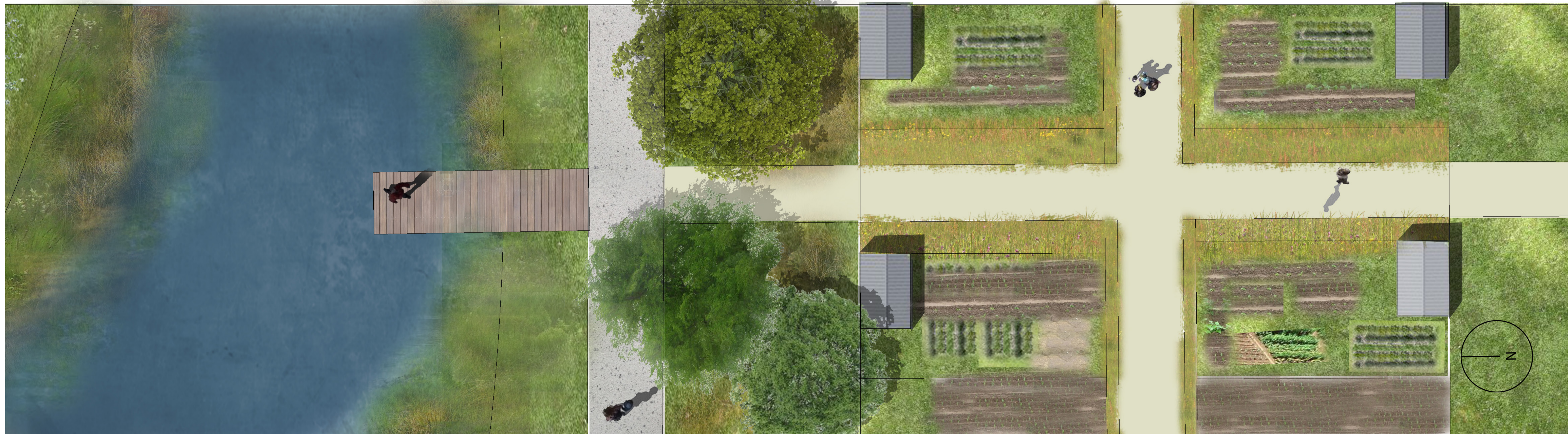
- Arbres existants
- Arbres plantés ou transplantés Environ 170

Coupe et plan voirie
1/50e





Coupe et plan espace de loisir
1/75e :

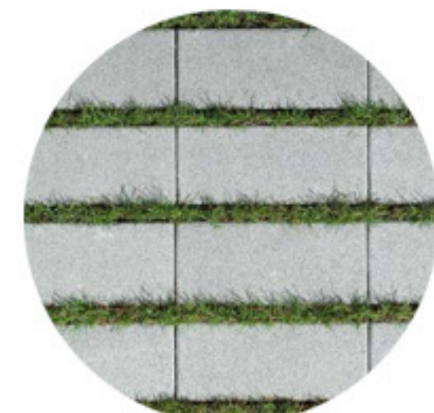




Alnus cordata



Quercus cerris



pavé joint engazonné



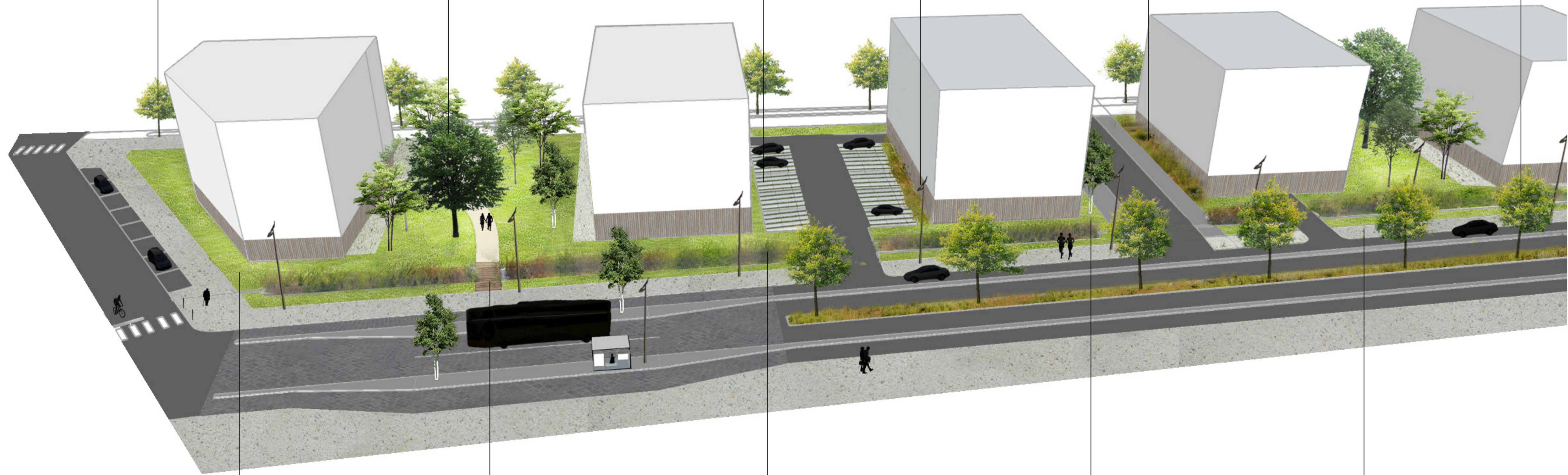
Candelabre
(mobilier de la ville)



Massif de graminés
et persistantes



Acer rubrum



Pelouse



Passerelle bois



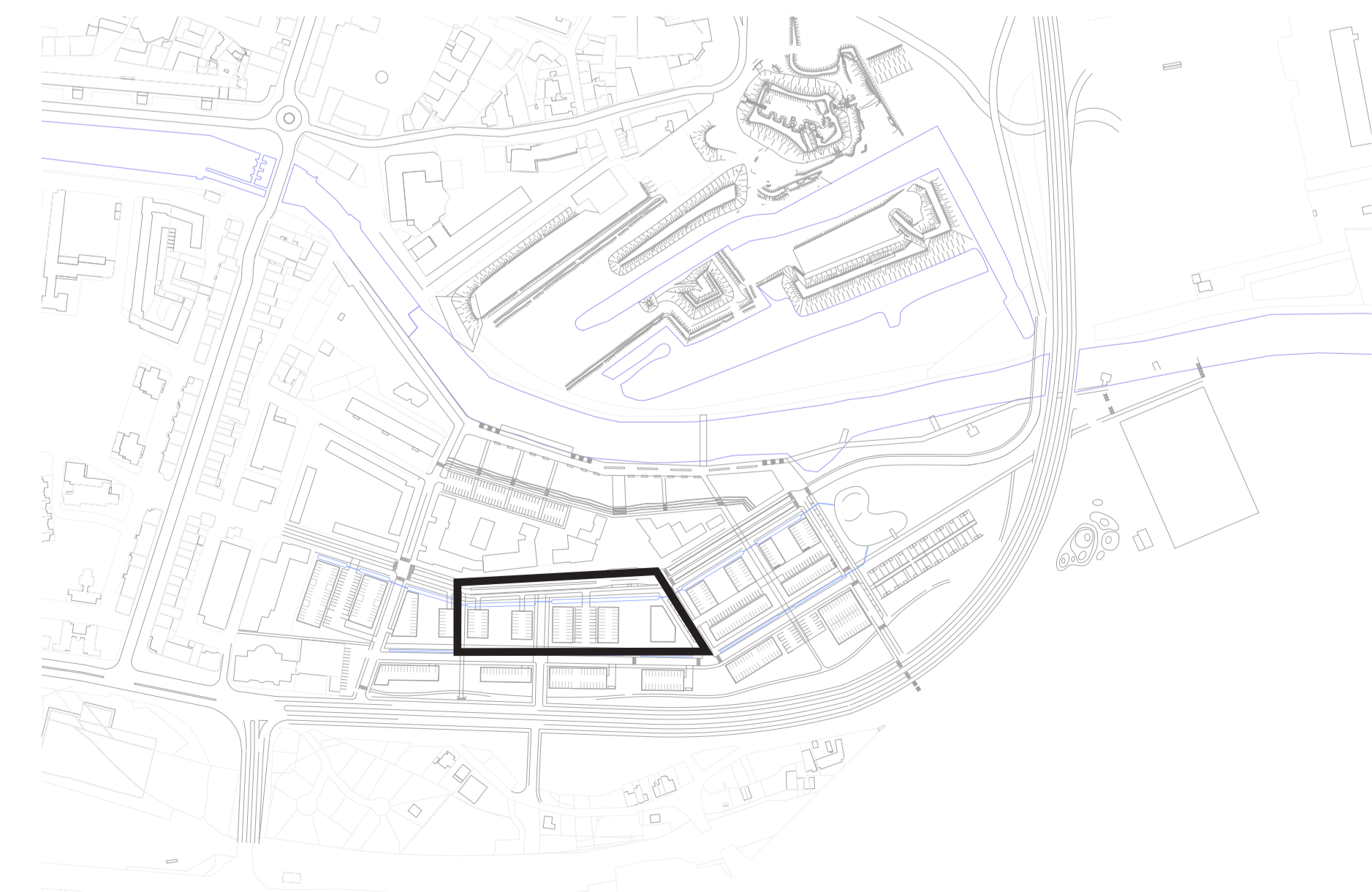
Graminés et plantes hydrophyles



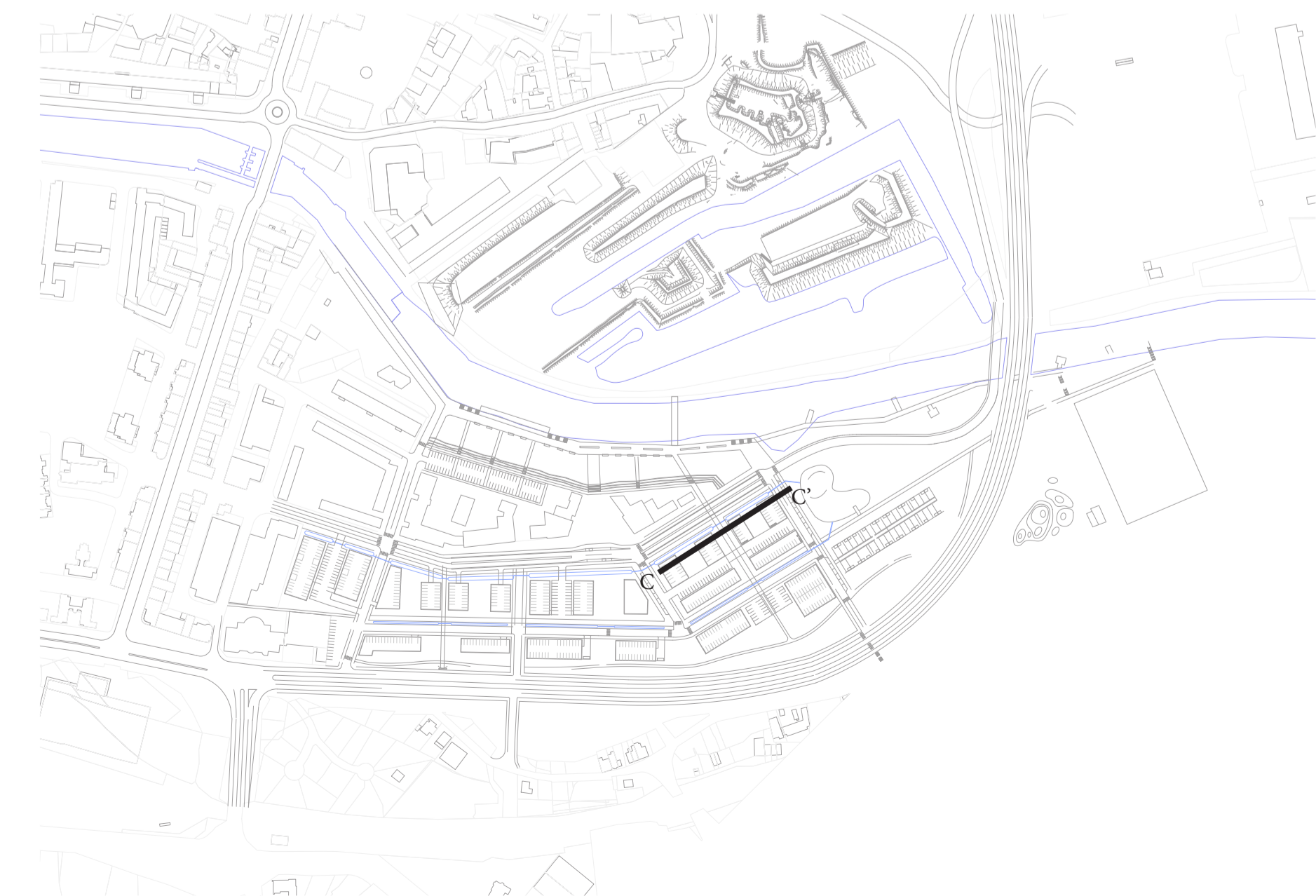
Betula pendula



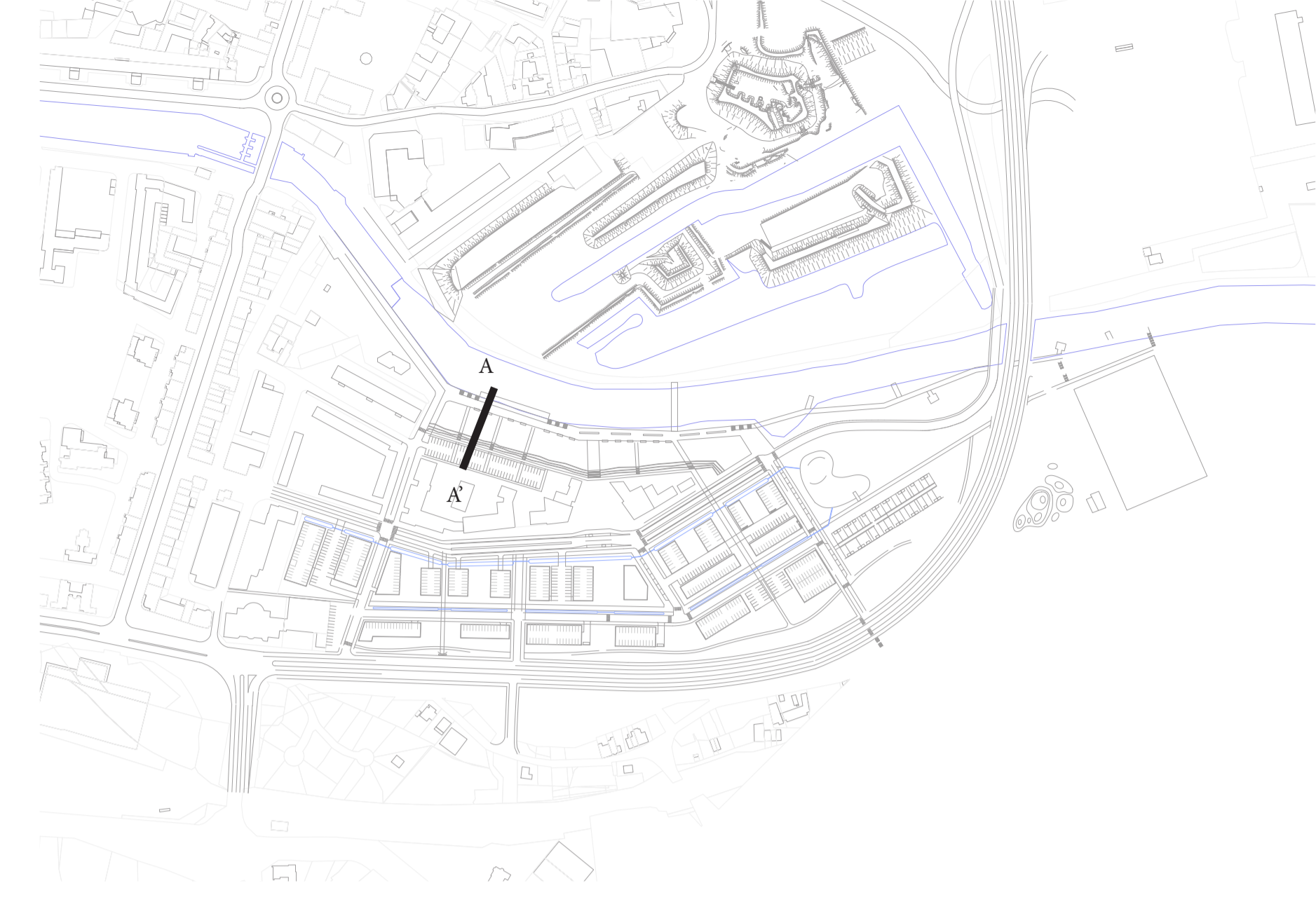
Béton grenillé



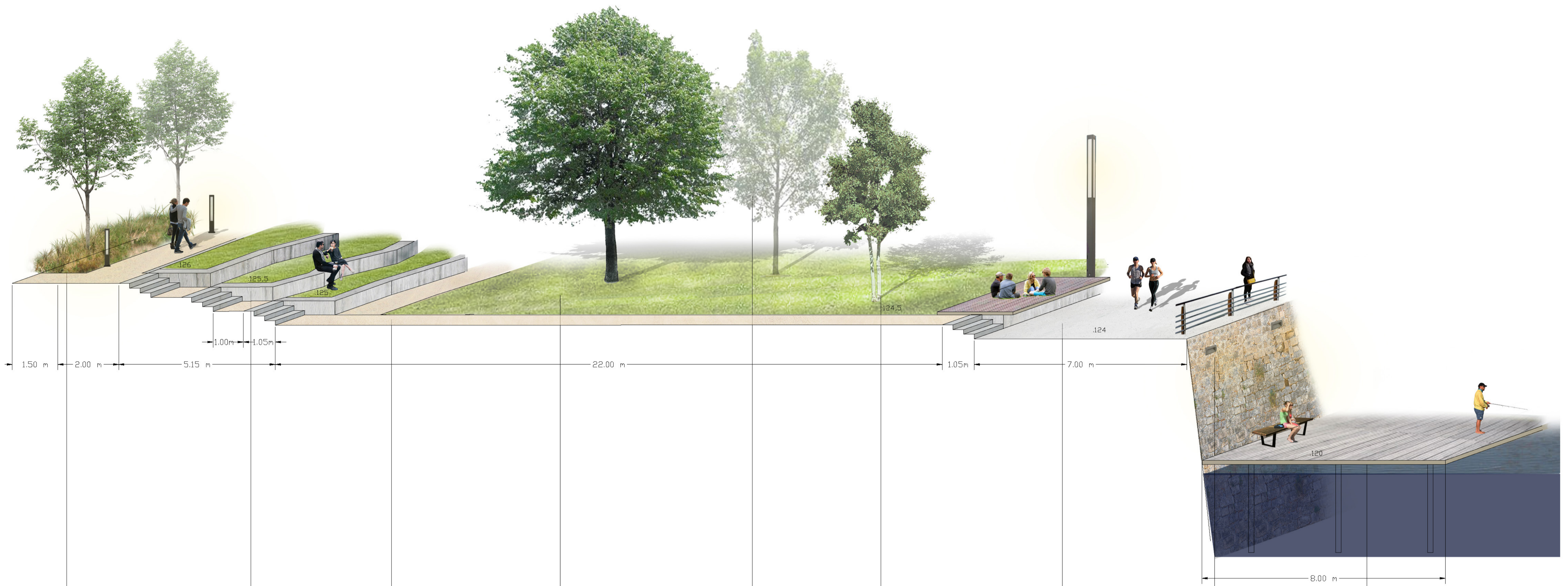
Coupe transversale du bâti
1/200e :



Axonométrie des quais
1/75e



A



A'



Stipa + cornus



Béton



sable stabilisé



pelouse



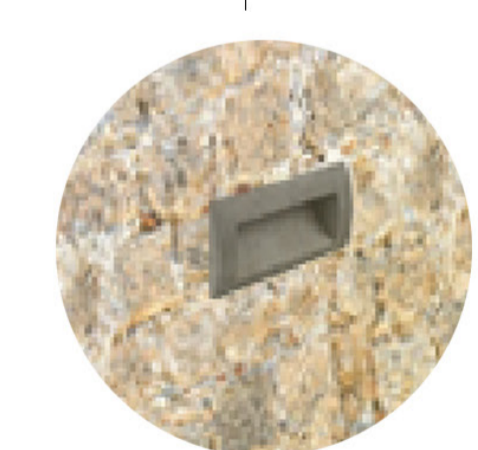
Acer rubrum



Betula pendula



Béton grenillé

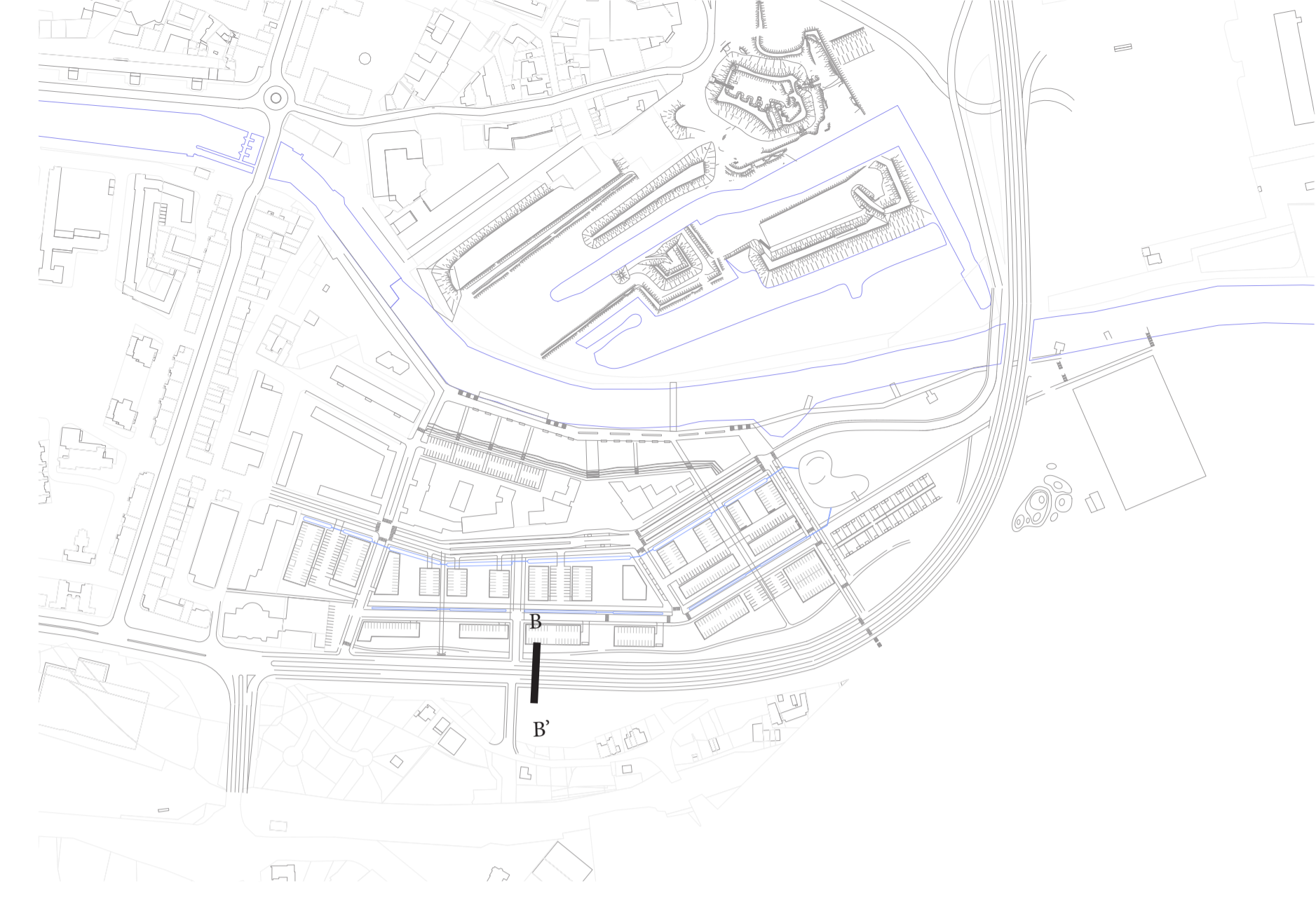


Spot lumineux encastré



Bois de chêne

Axonométrie du Boulevard Charles de Gaulle
1/100e



Bois de chêne



Végétation hydrophile et graminé



Quercus palustris



Béton grenailé



Platanus x hispanica



Mur d'escalade

Coupe transversale 1/10e :

