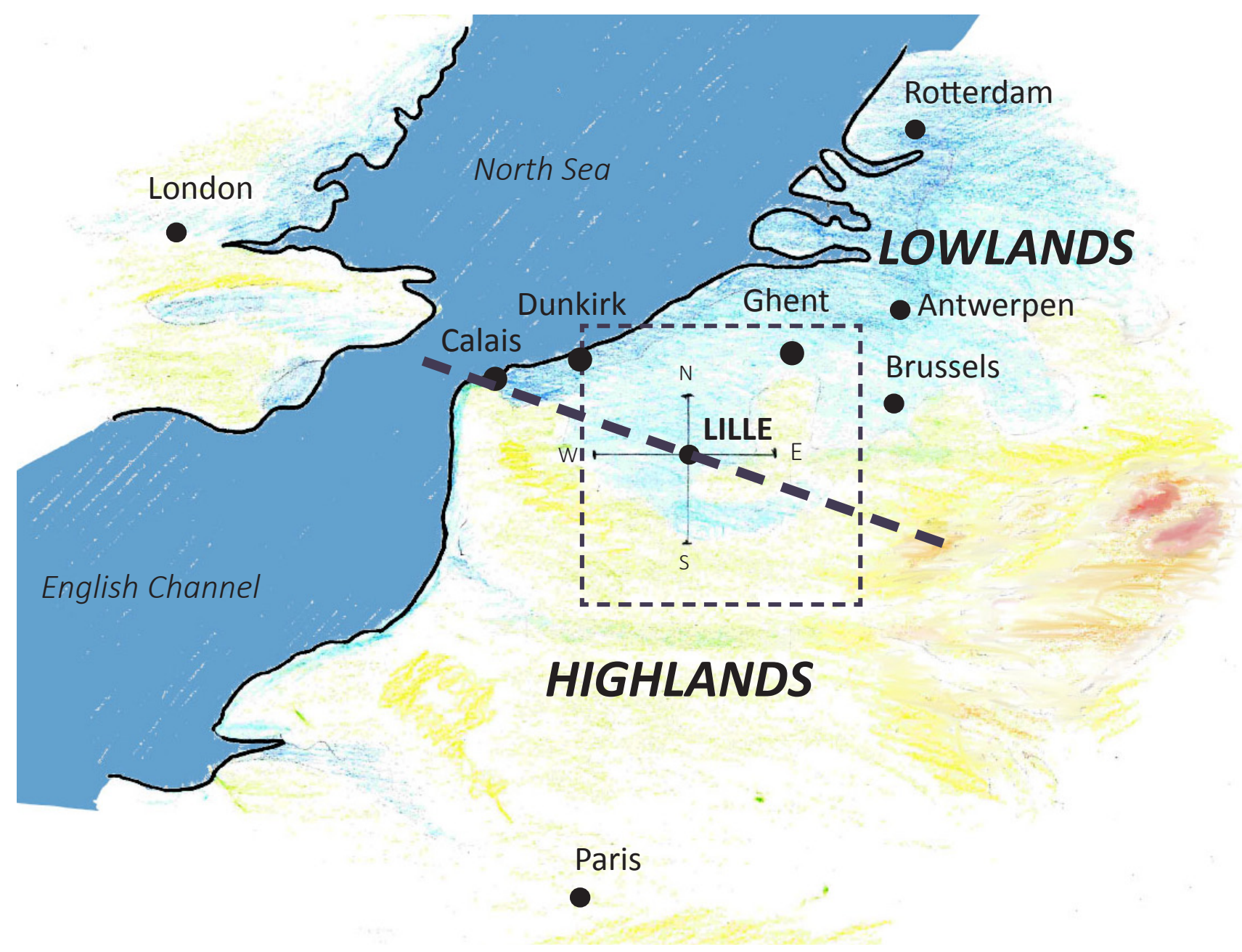


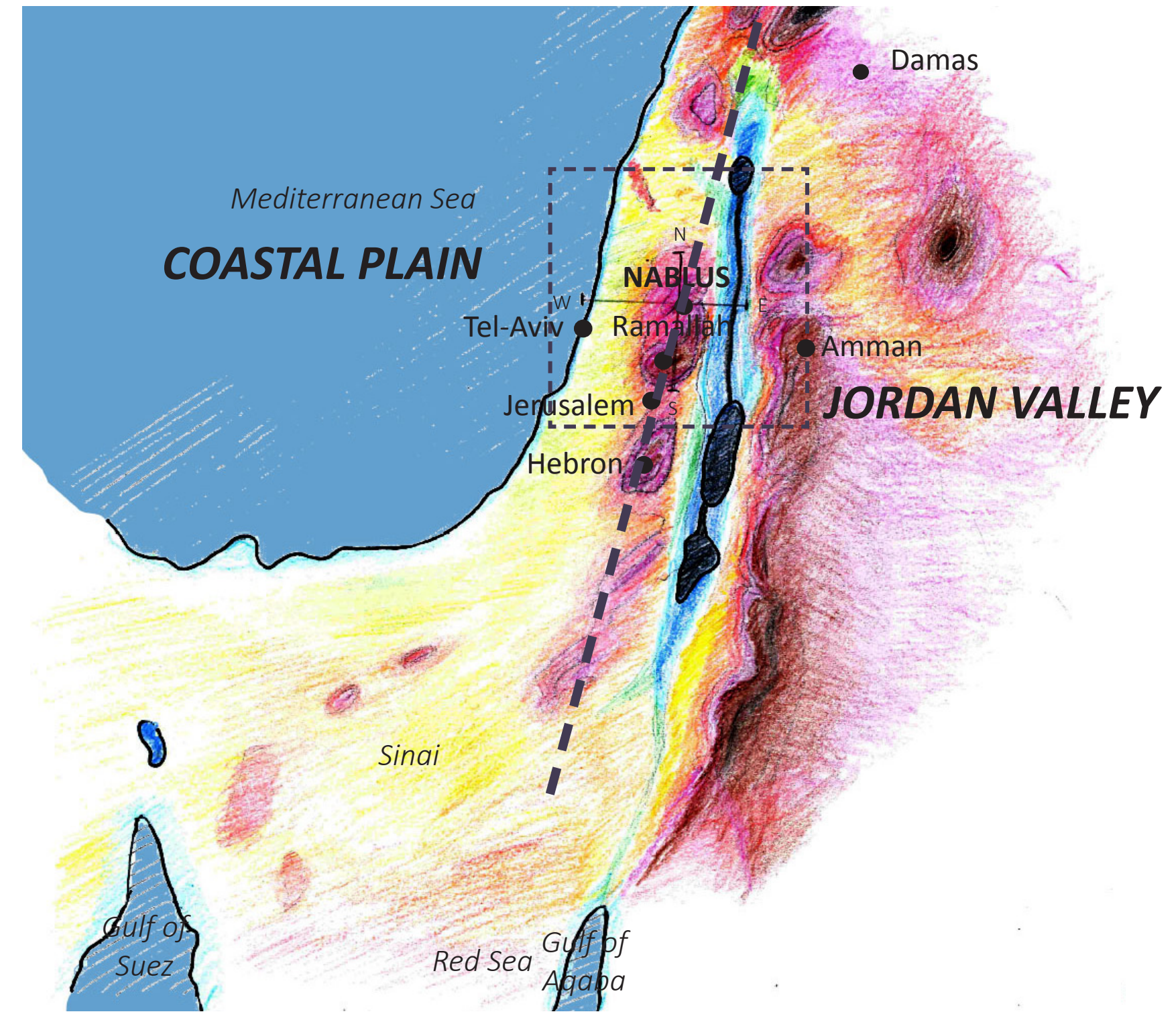


LILLE
2017
NABLUS

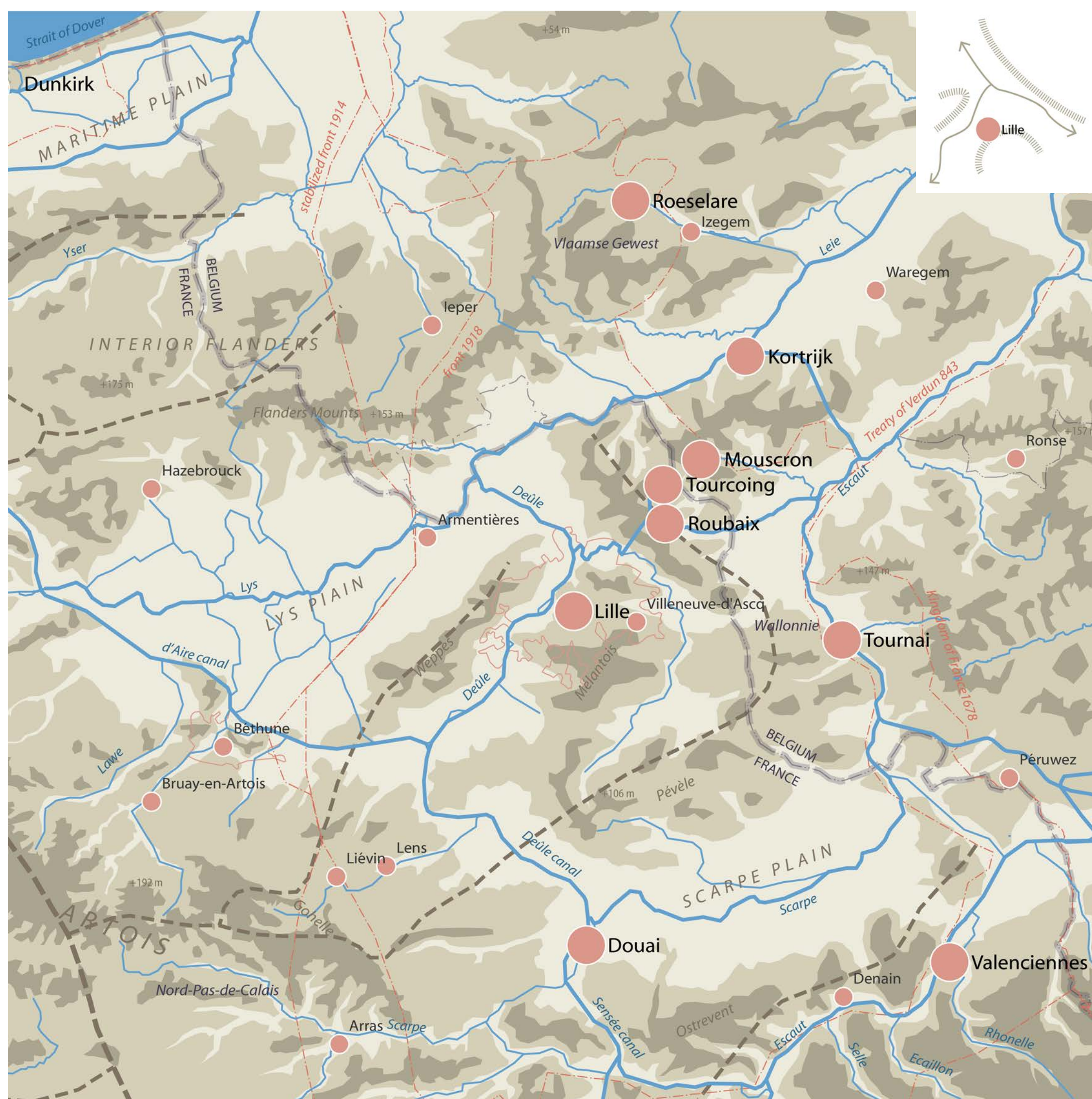
TWO CROSSROAD VALLEYS [THE GROUND]



AN INTERFACE BETWEEN HIGHLANDS AND LOWLANDS



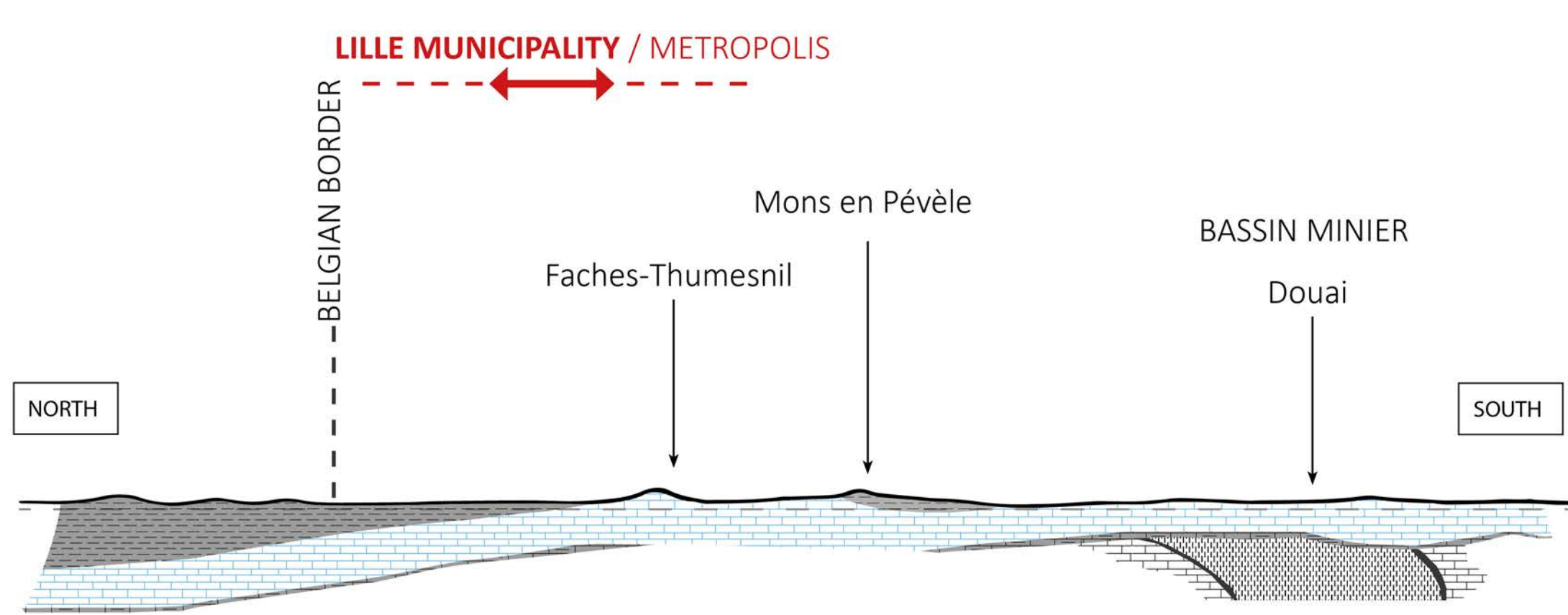
A PATH BETWEEN COASTAL PLAIN AND JORDAN VALLEY



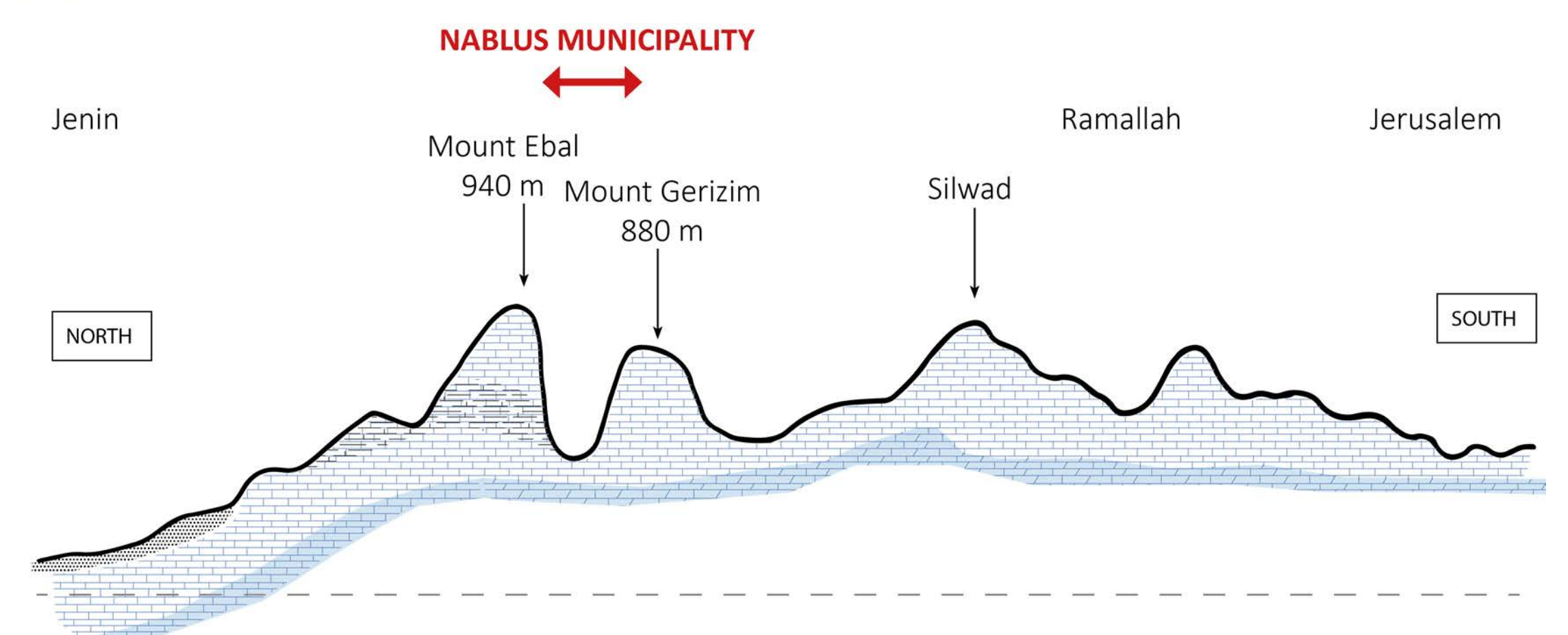
A GATE TO THE NORTH RIVERS NETWORK



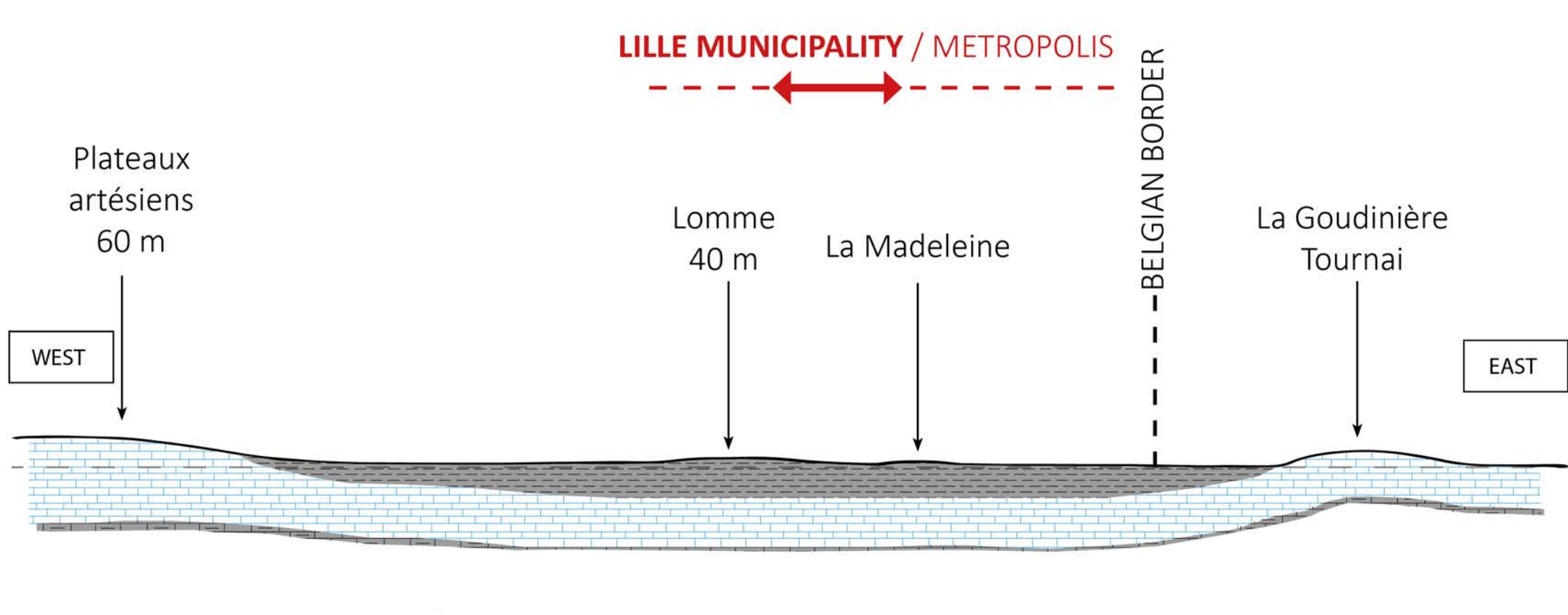
A CROSSING POINT BETWEEN AL TUFFAH, ASKAR, AND HIWARA VALLEYS



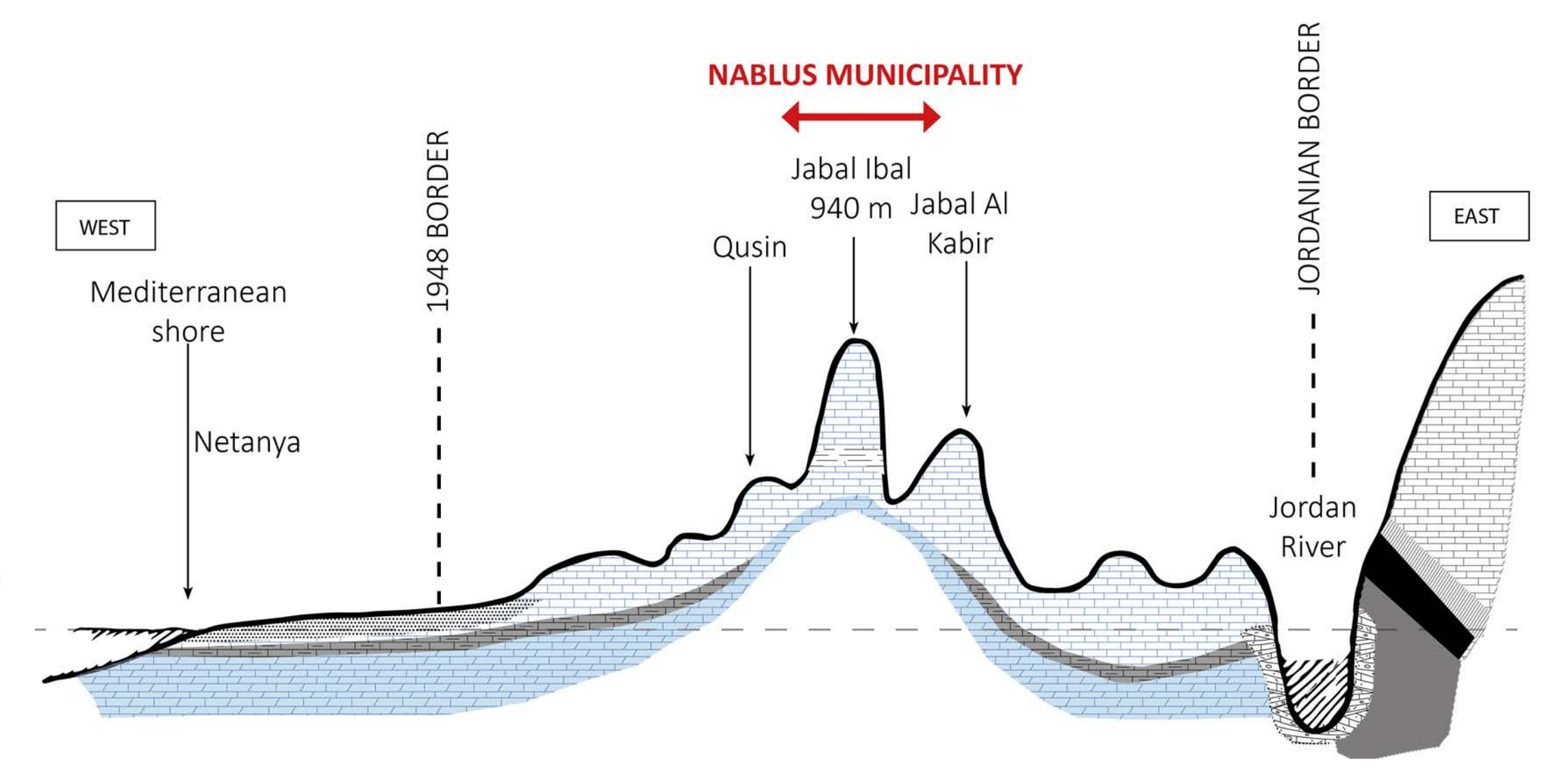
AN INTERFACE BETWEEN CHALK AND CLAY



A NEST BETWEEN TWO MOUNTAINS



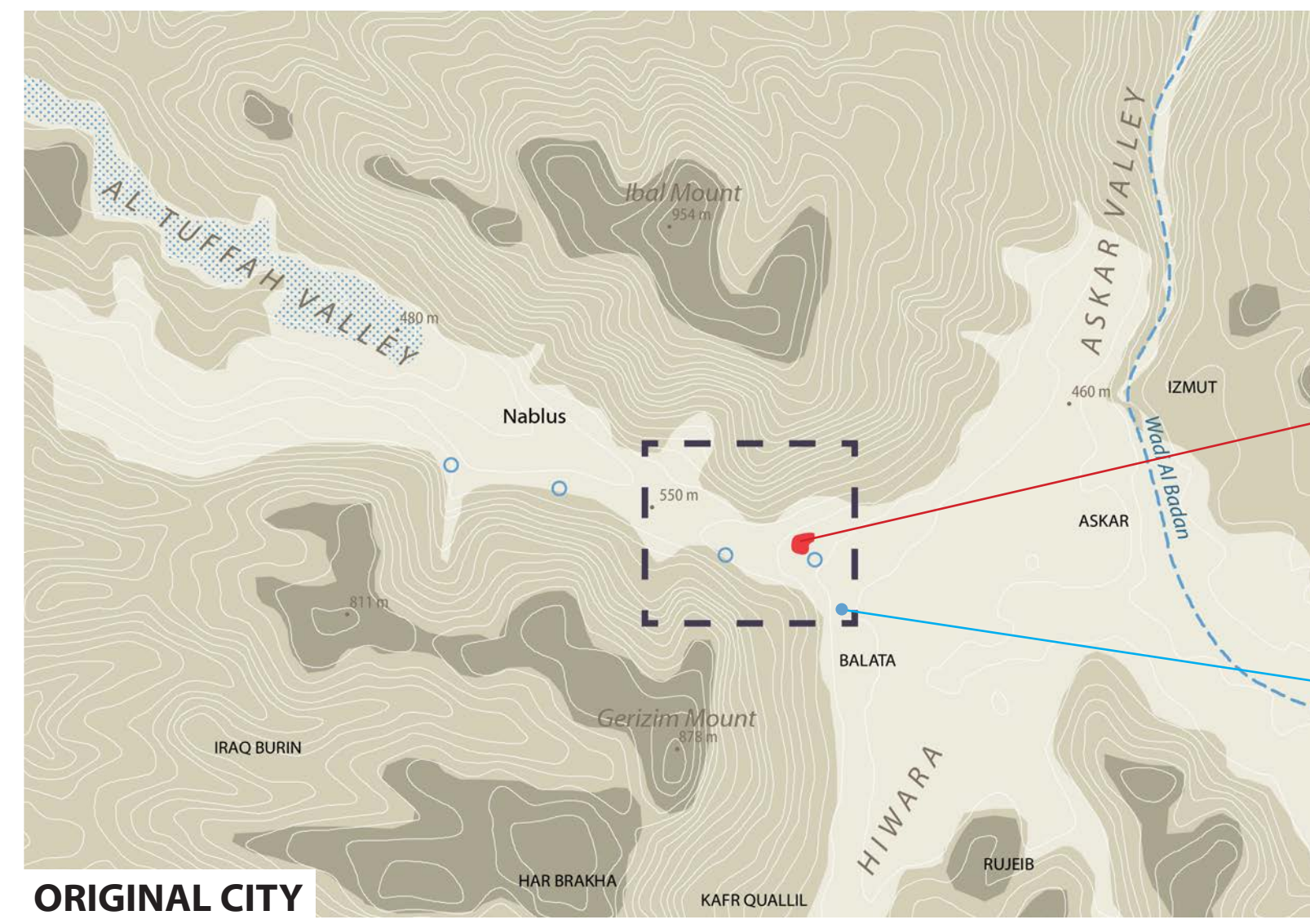
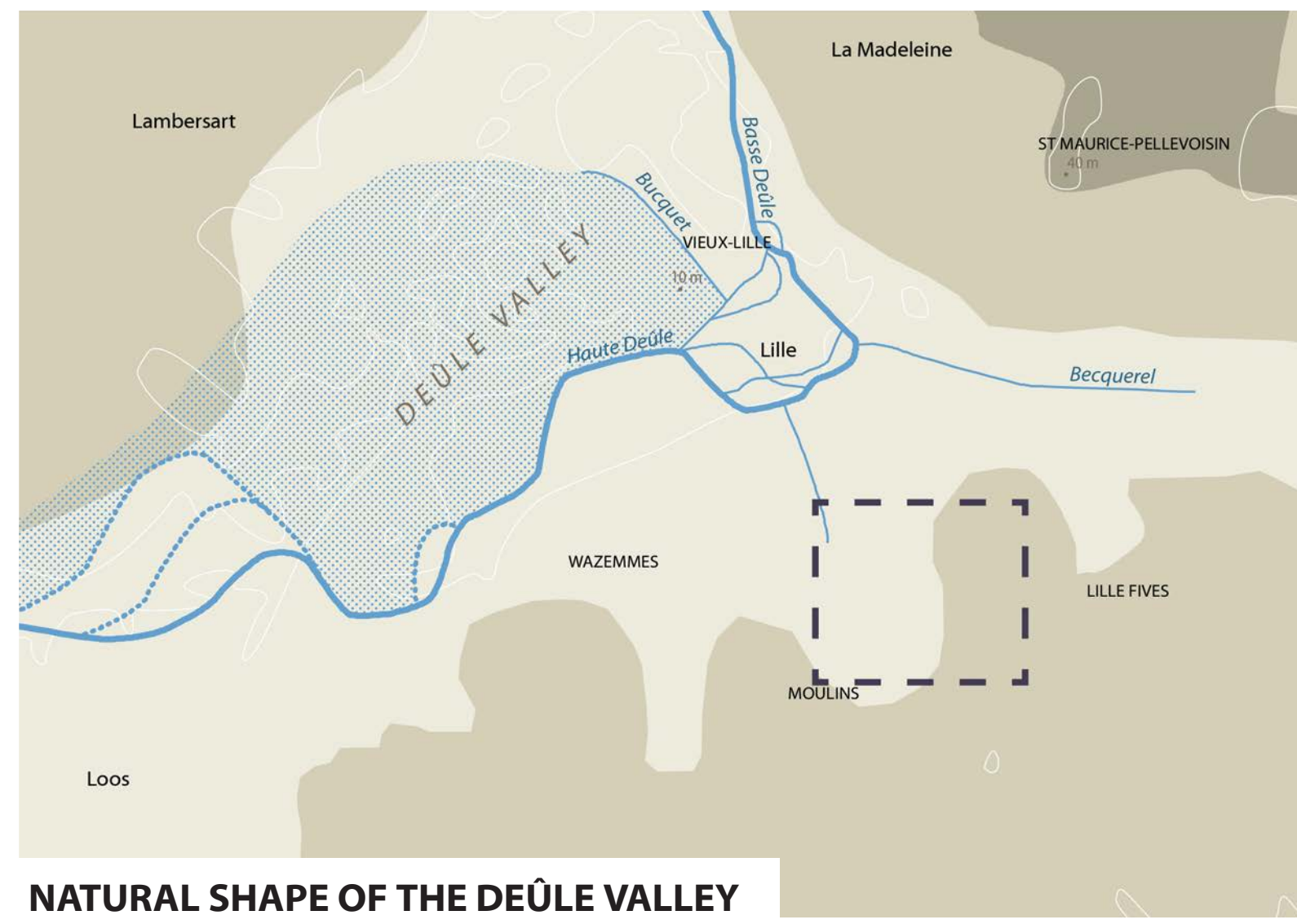
A FLOODING CITY



A WATERTANK CITY

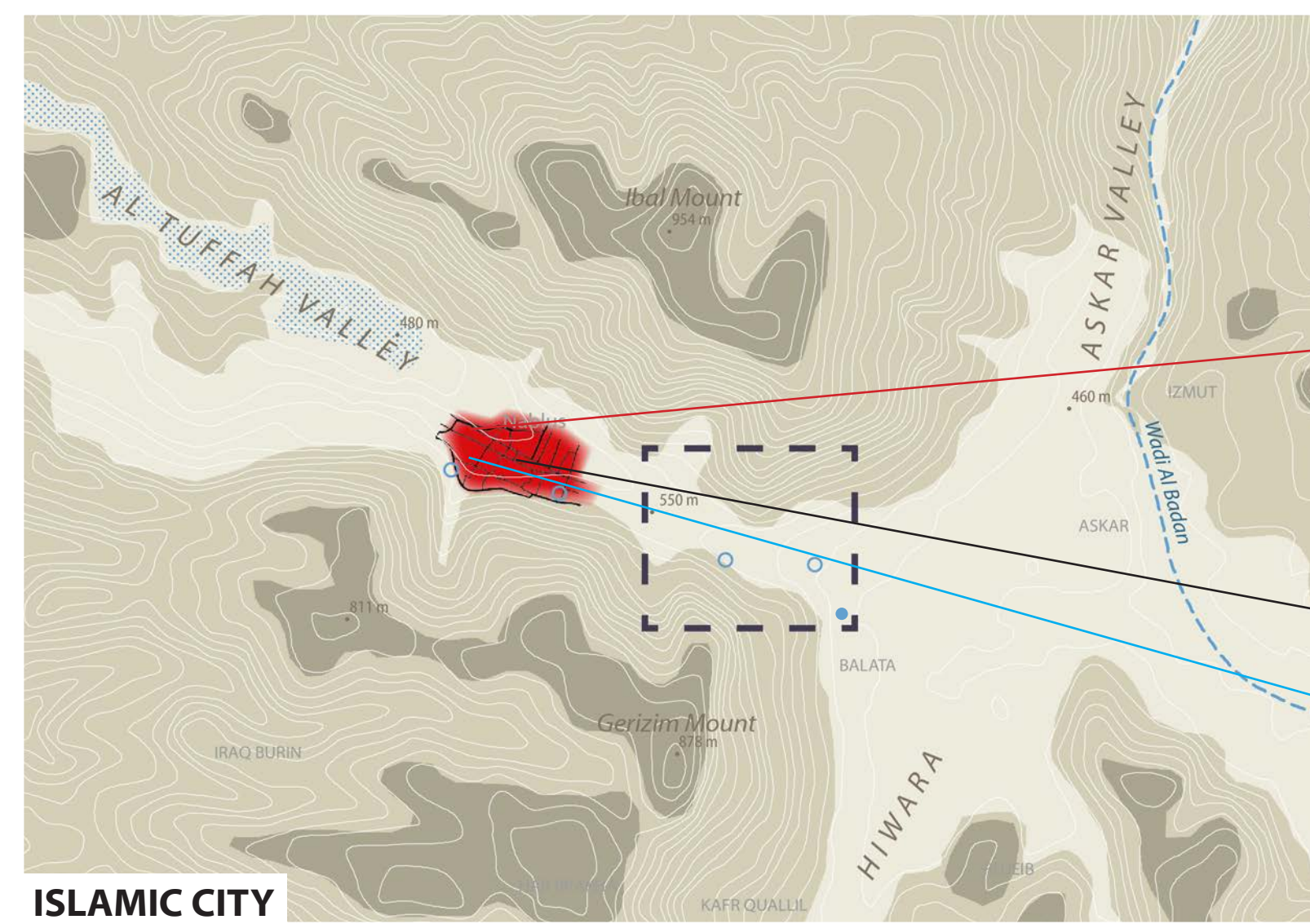
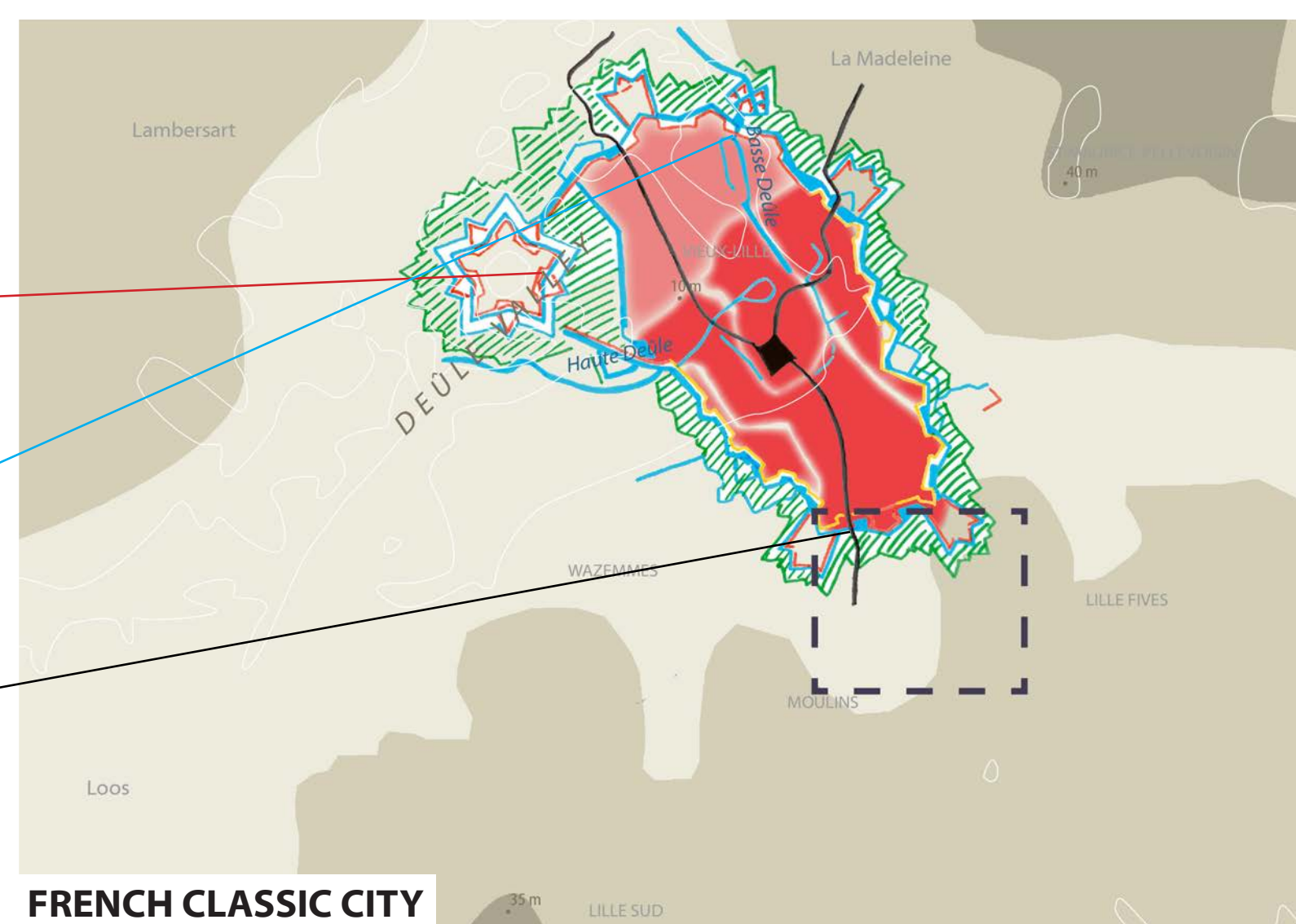
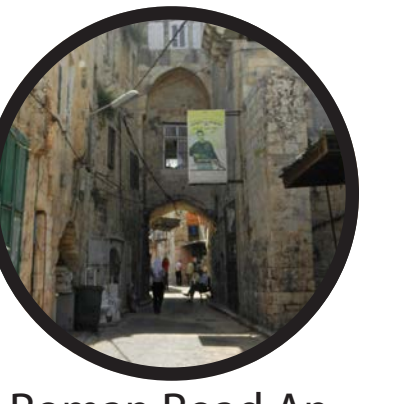
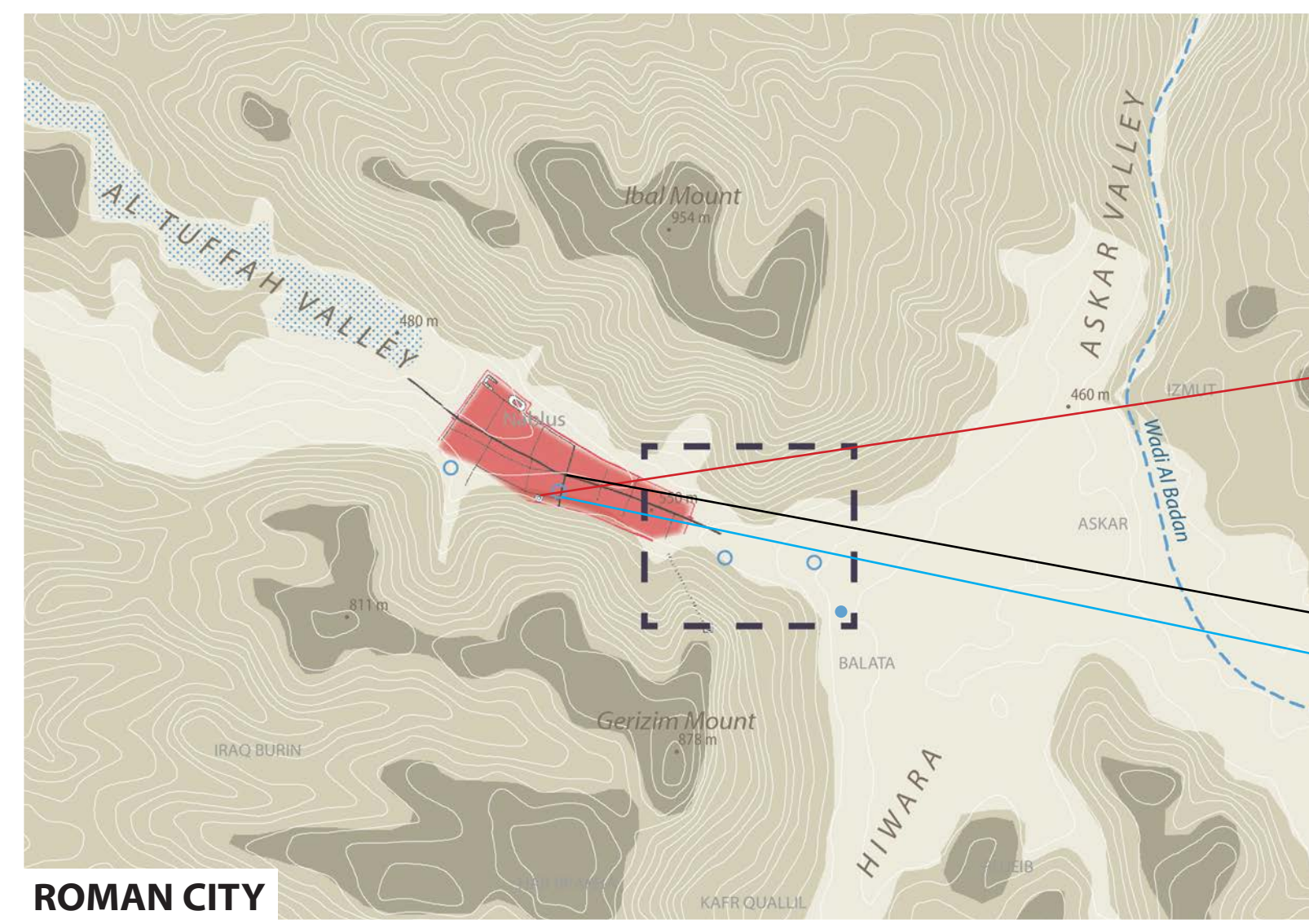
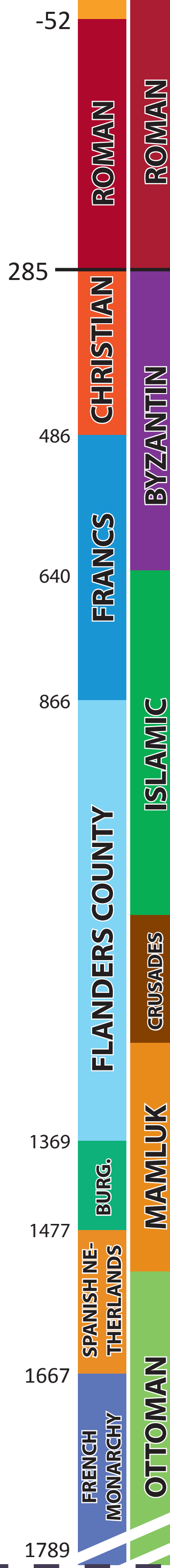
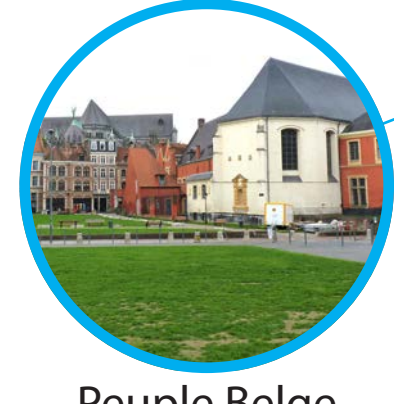
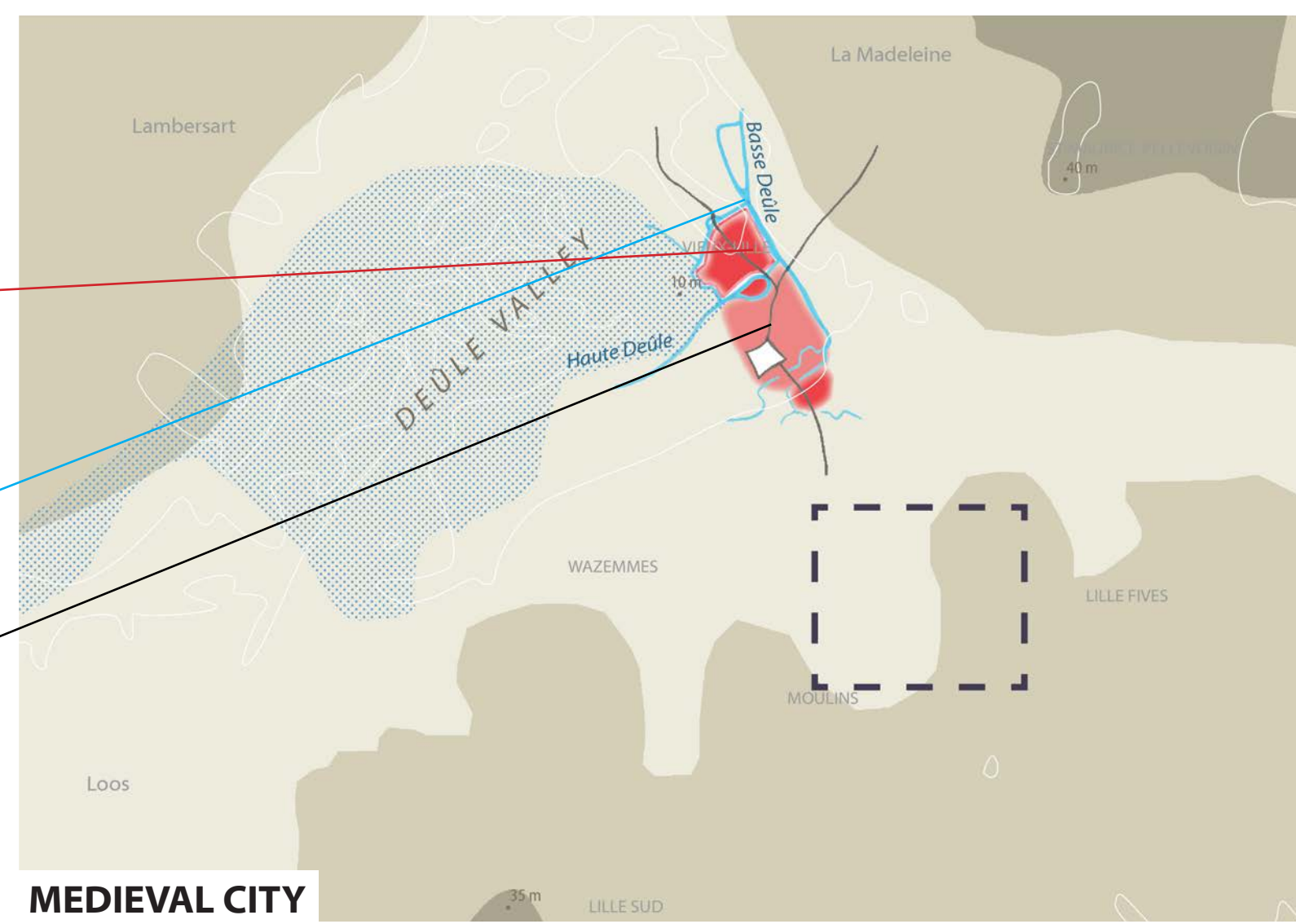


HUMAN HISTORIES EMBODYING THE GENIUS LOCI [THE HISTORY]

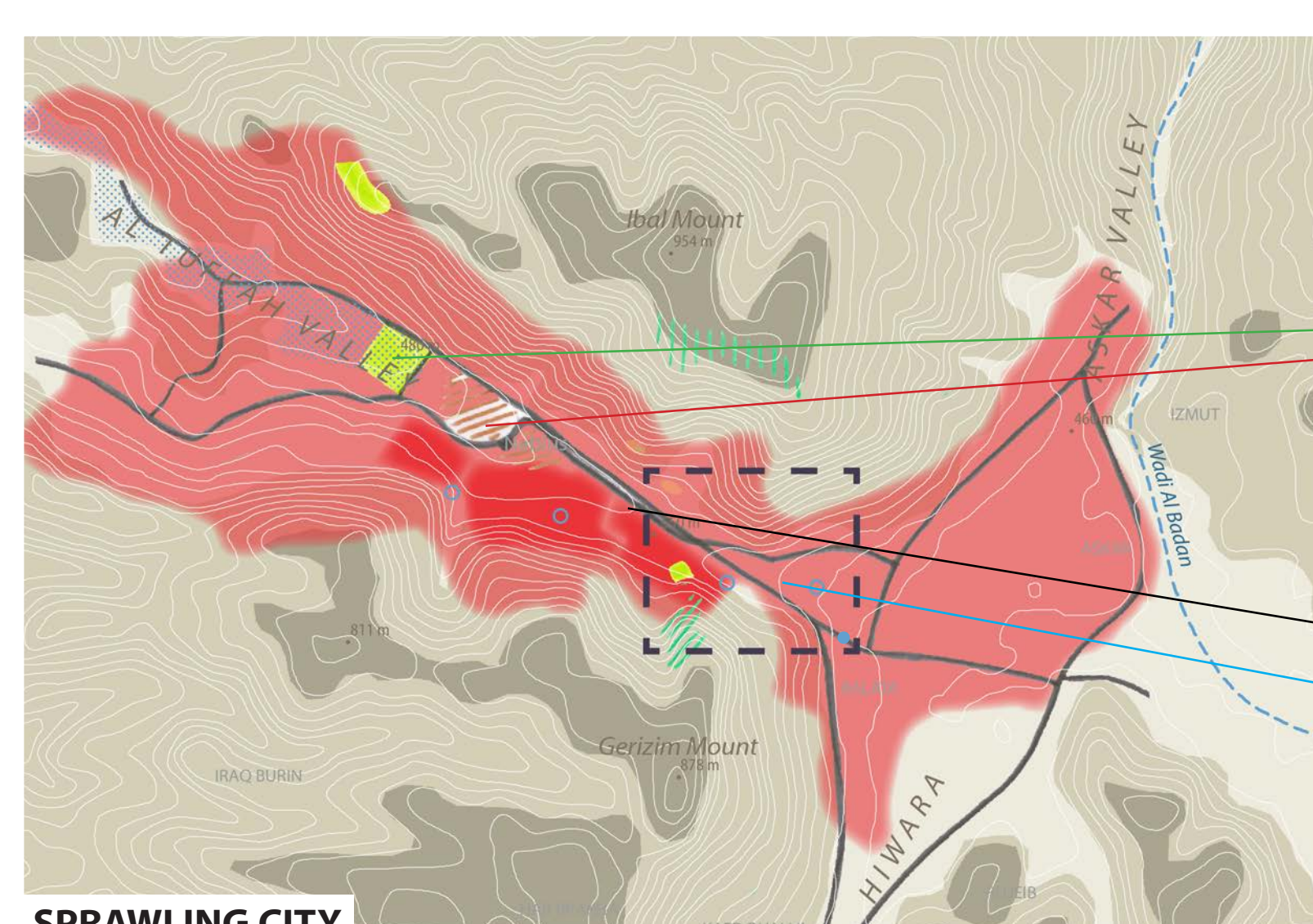
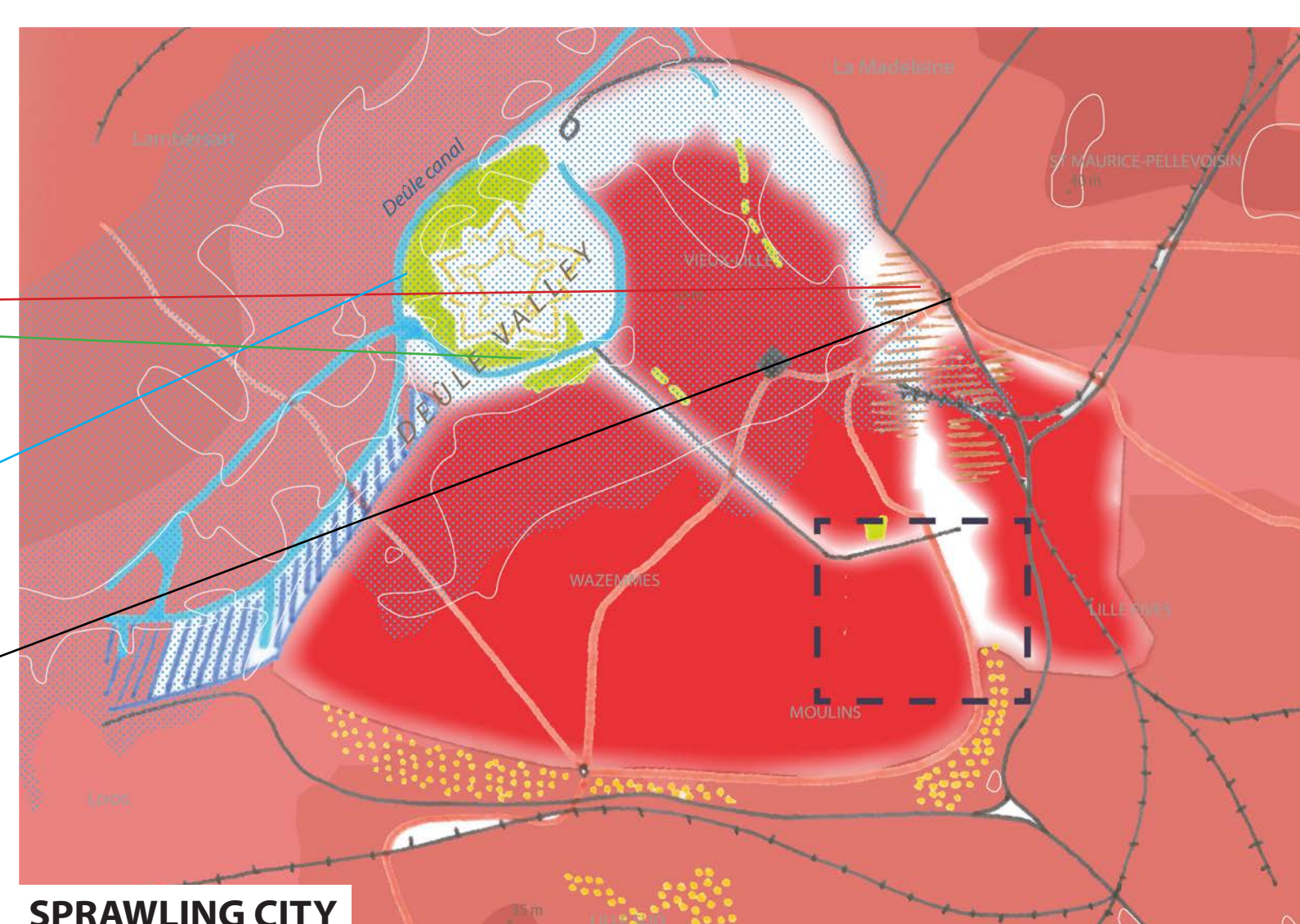
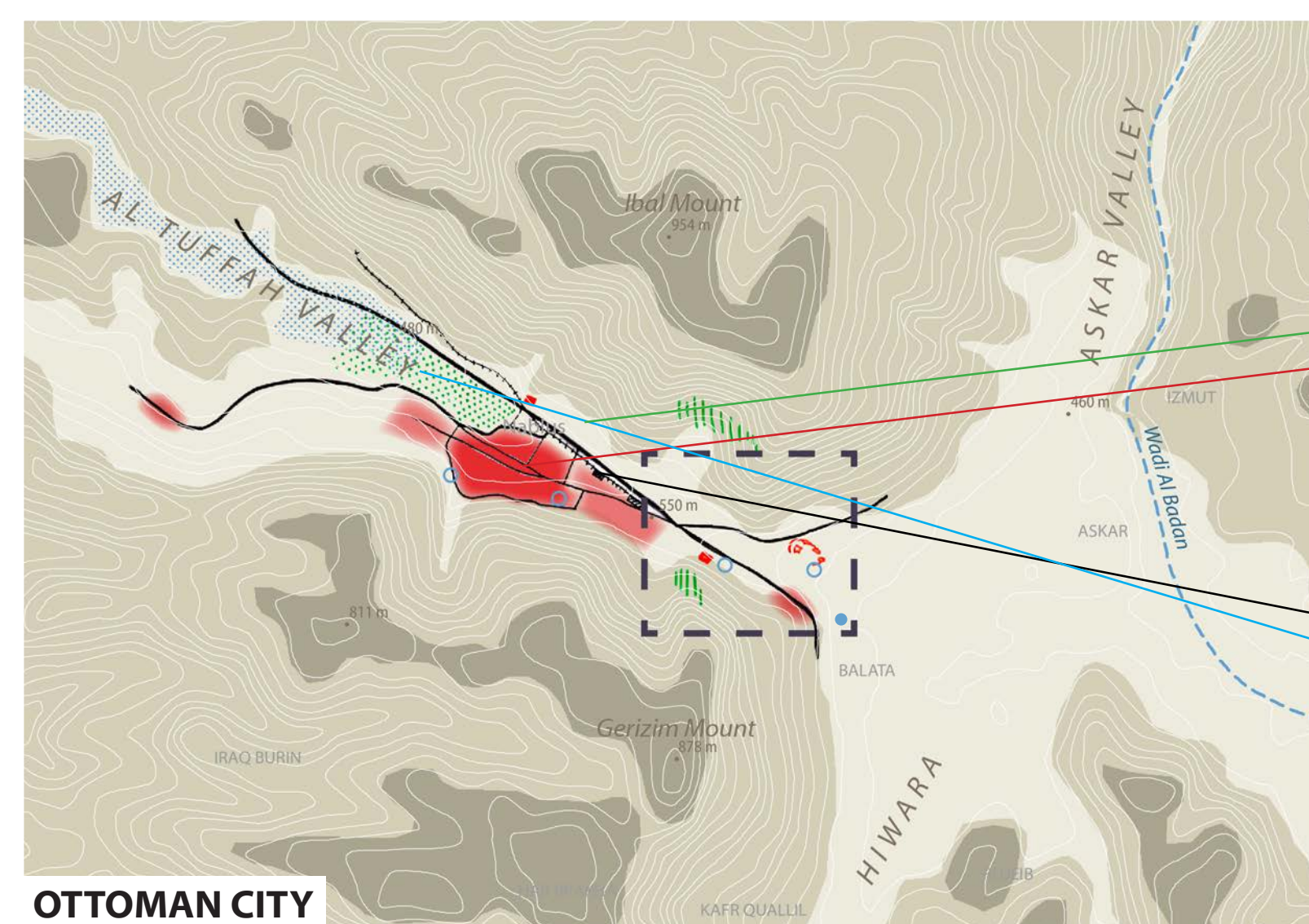
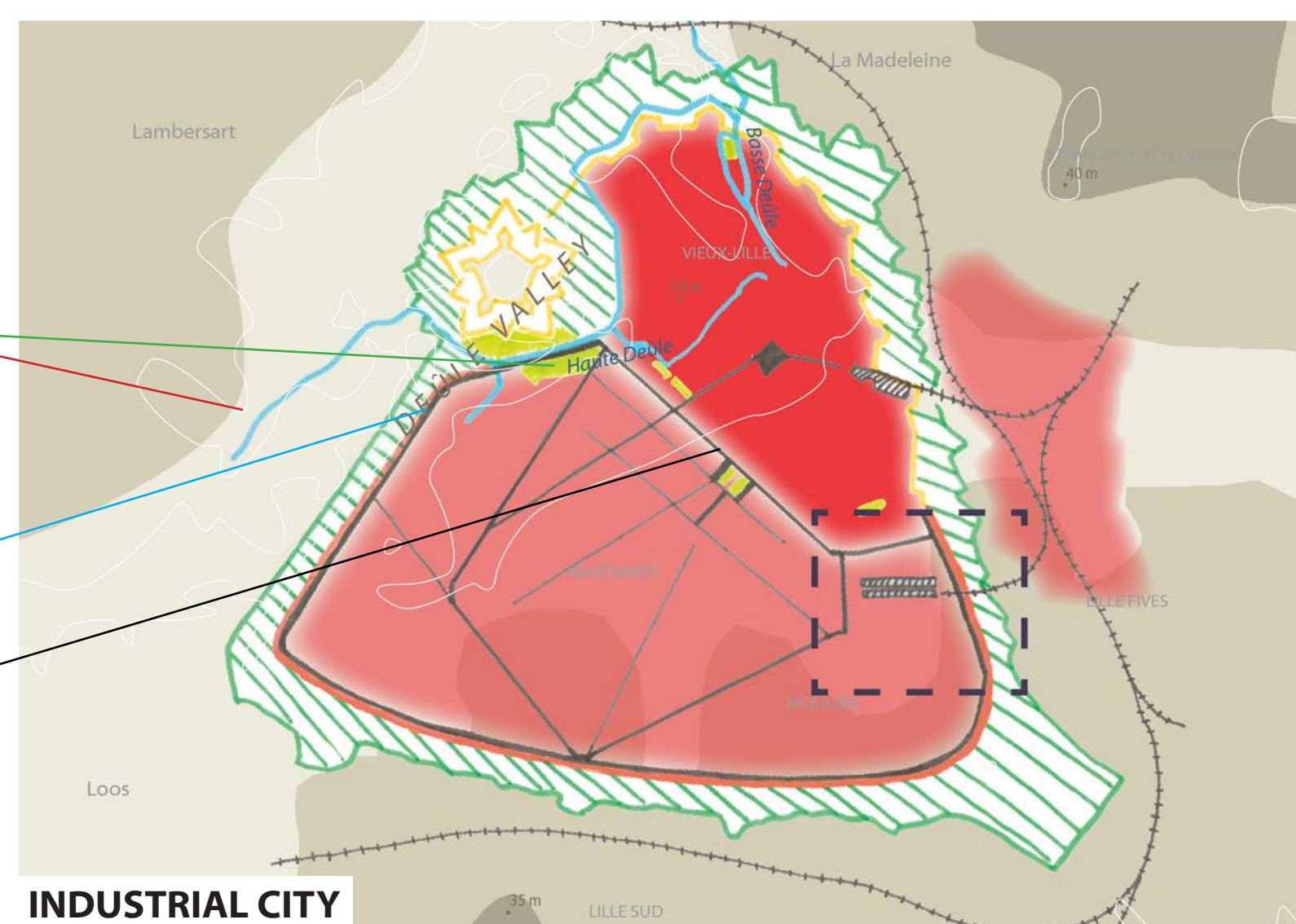


- 100

- Accentuation area
- Urban development
- Wet area
- Forest
- Steppe
- Valley



1850

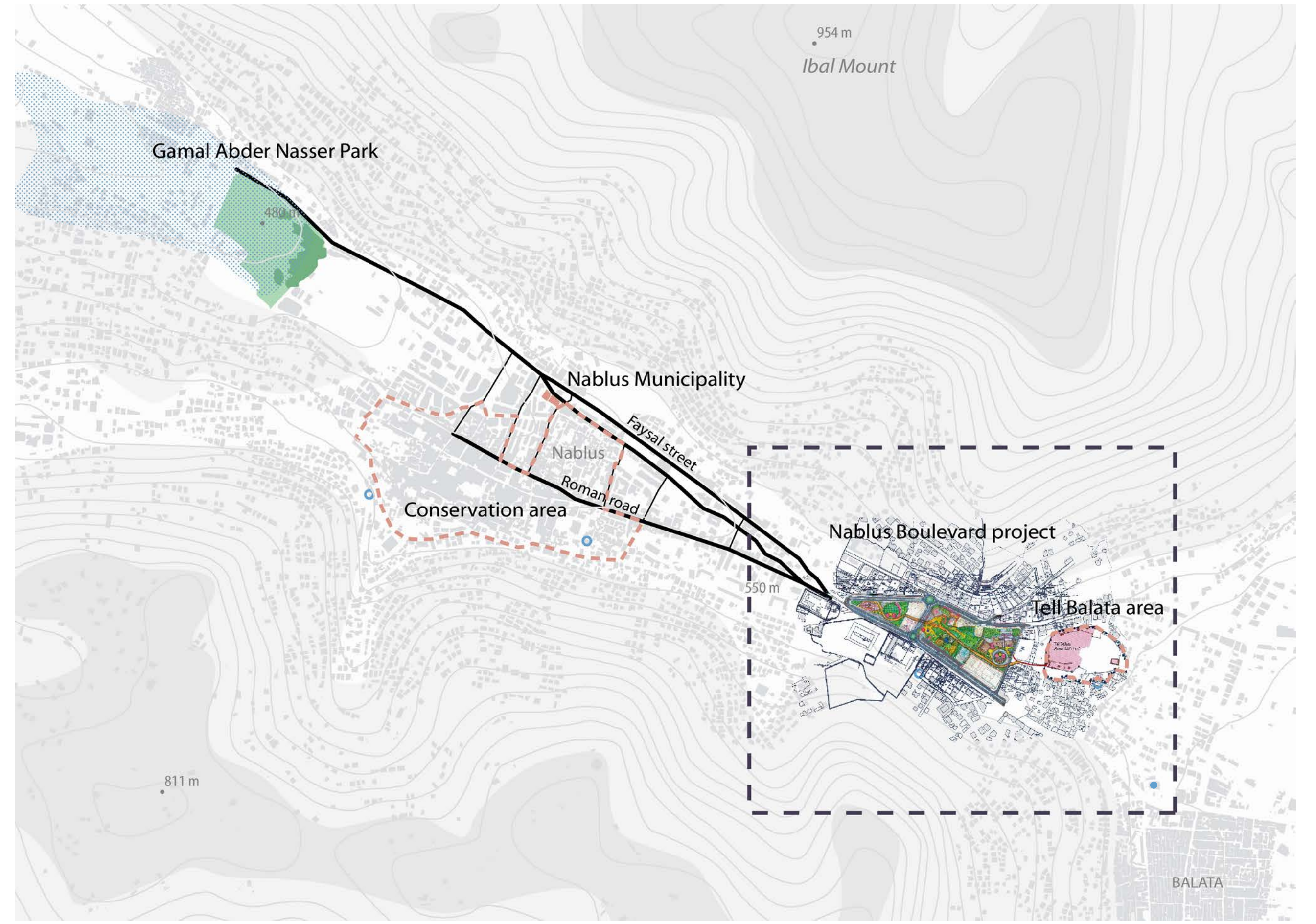
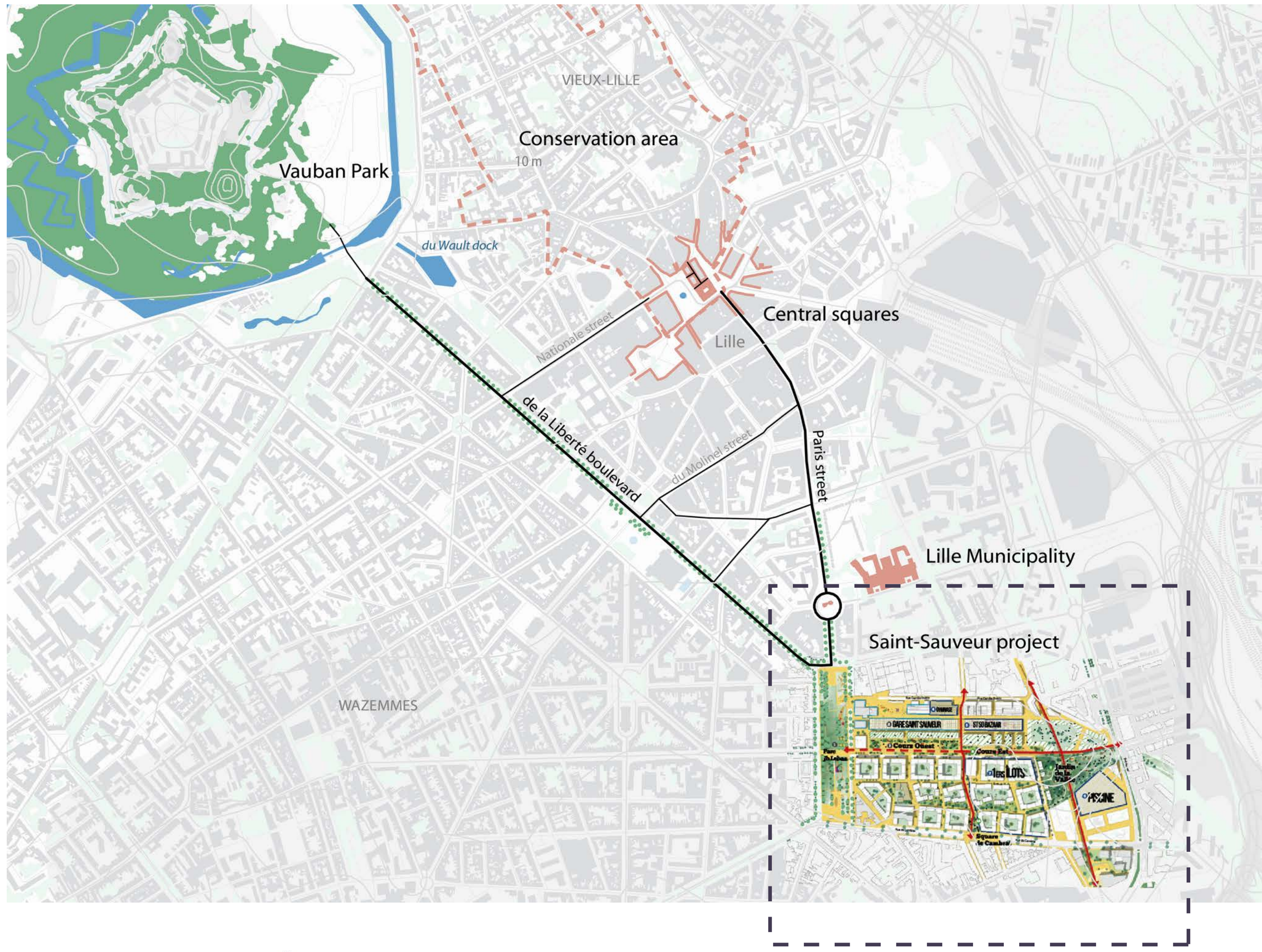


1 : 50 000
0 0,375 0,75 1,5 2,25 3 Km
Source: Earth National Geographic World Map & World Topographic Map

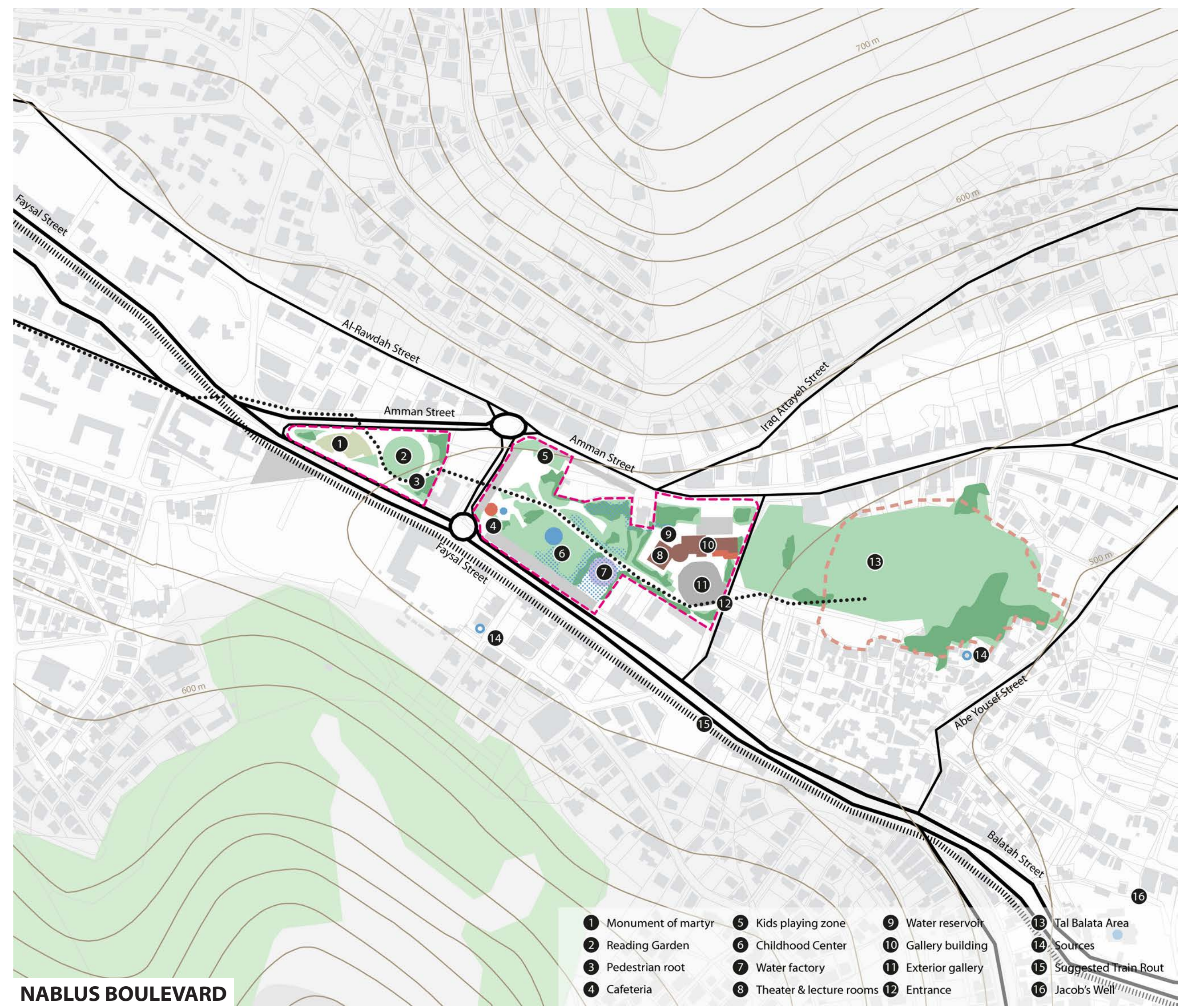
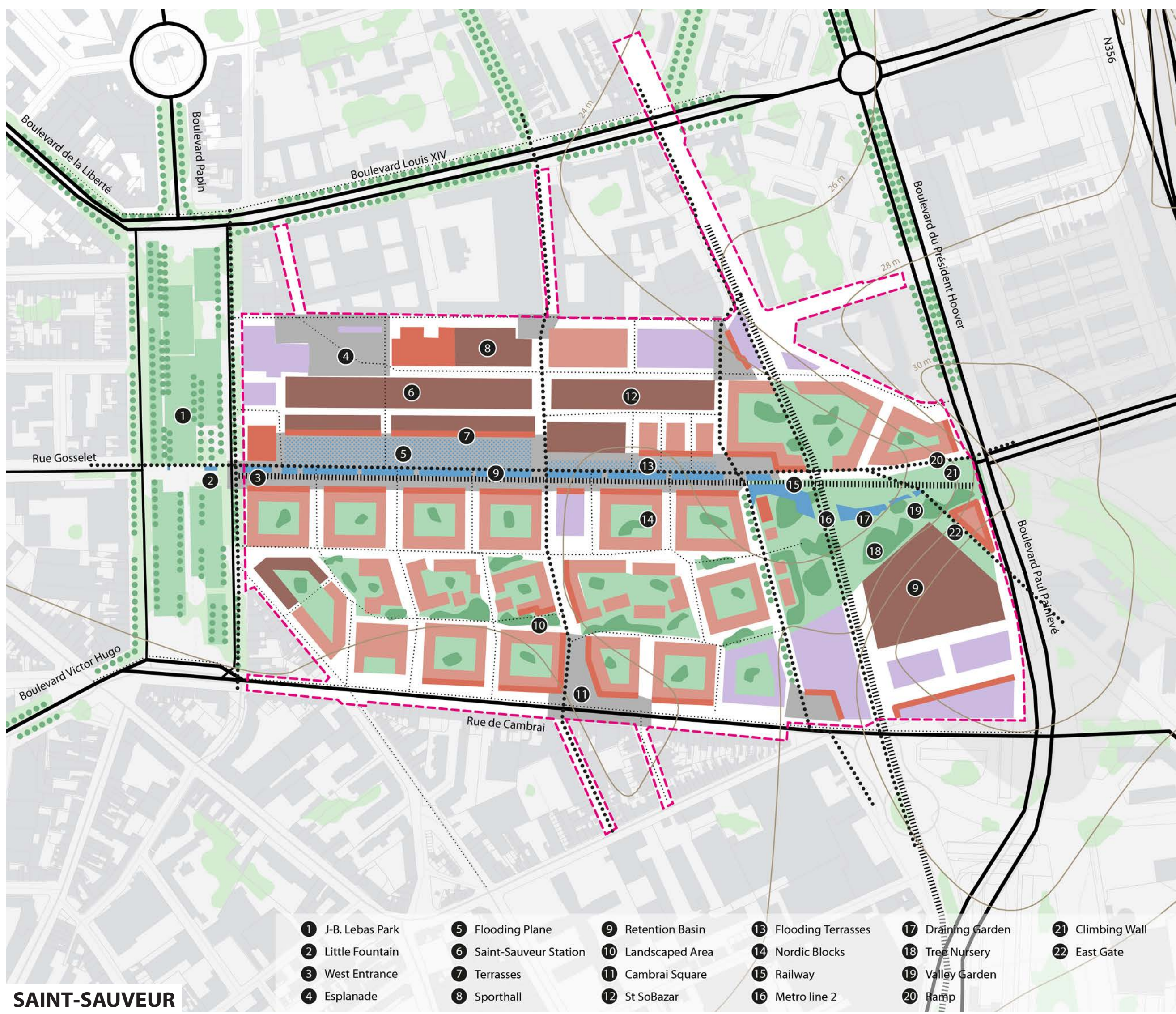




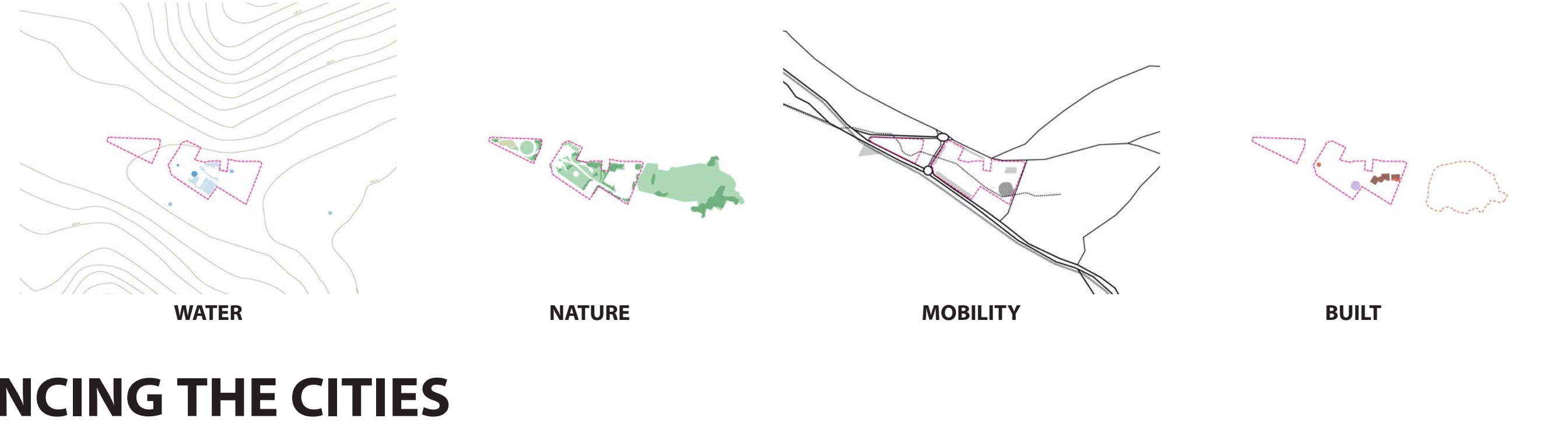
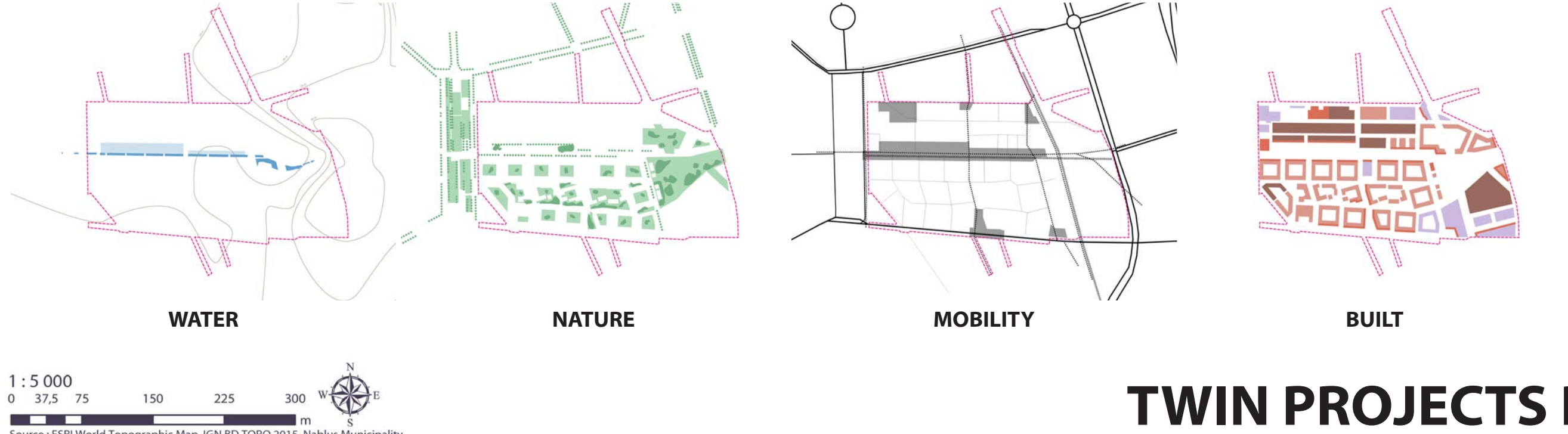
TO DRAW THE FUTURE FROM THE HISTORIC LAYOUT [THE PROJECTS]



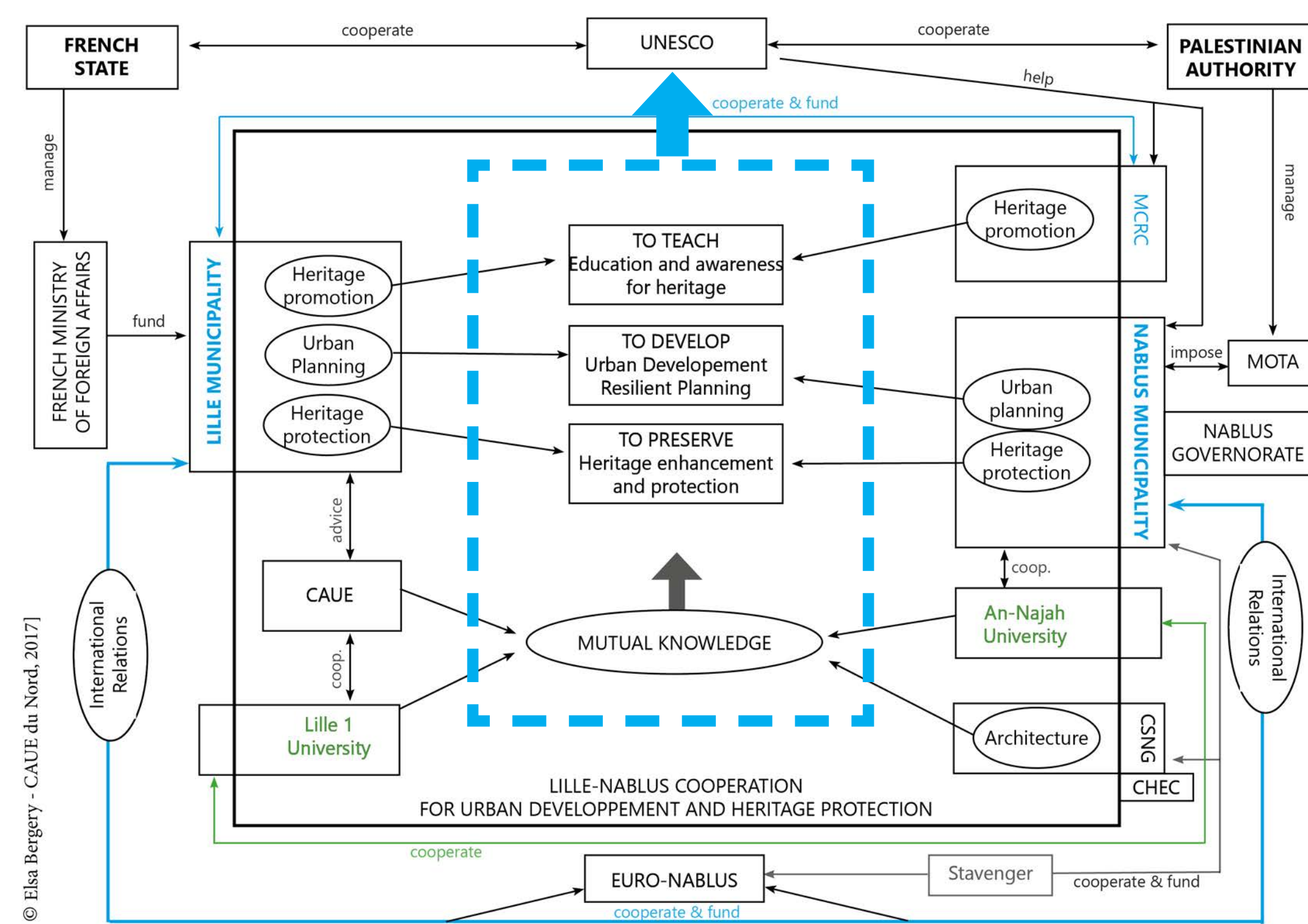
CONNECTING BOTH GREEN AND HISTORIC AREAS



TWIN PROJECTS REBALANCING THE CITIES



WATER, AN EXAMPLE OF PERMANENT USES IN LILLE



GATHERING STAKEHOLDERS



WATER, AN EXAMPLE OF PERMANENT USES IN NABLUS