

# MONTS DE FLANDRE

Vers un parcours d'interprétation du paysage



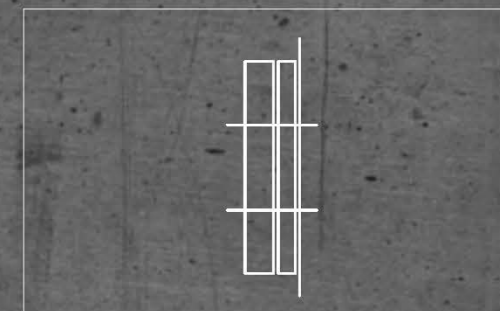
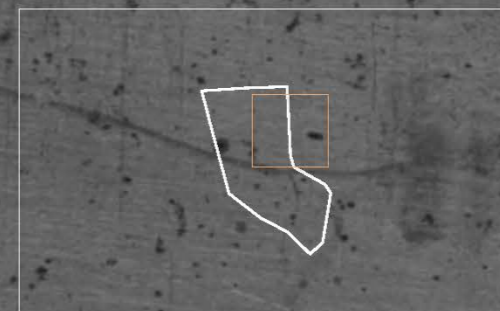
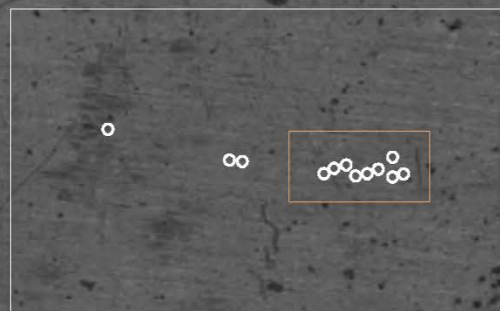
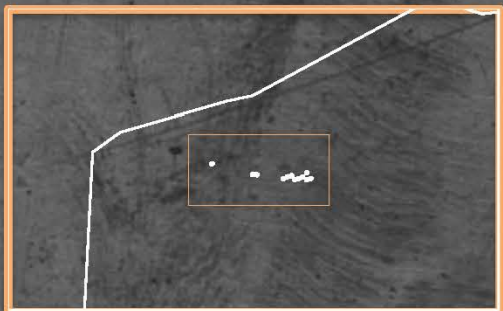
Le Mont des Récollets et le Mont des Cats depuis la Terrasse du Château de Cassel

Mont Cassel



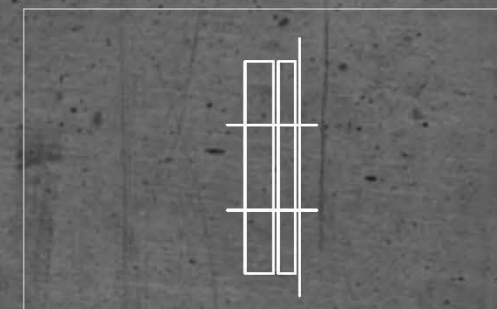
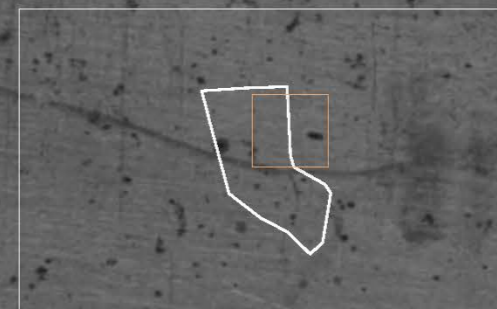
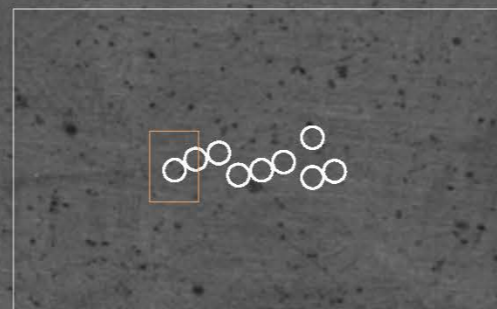
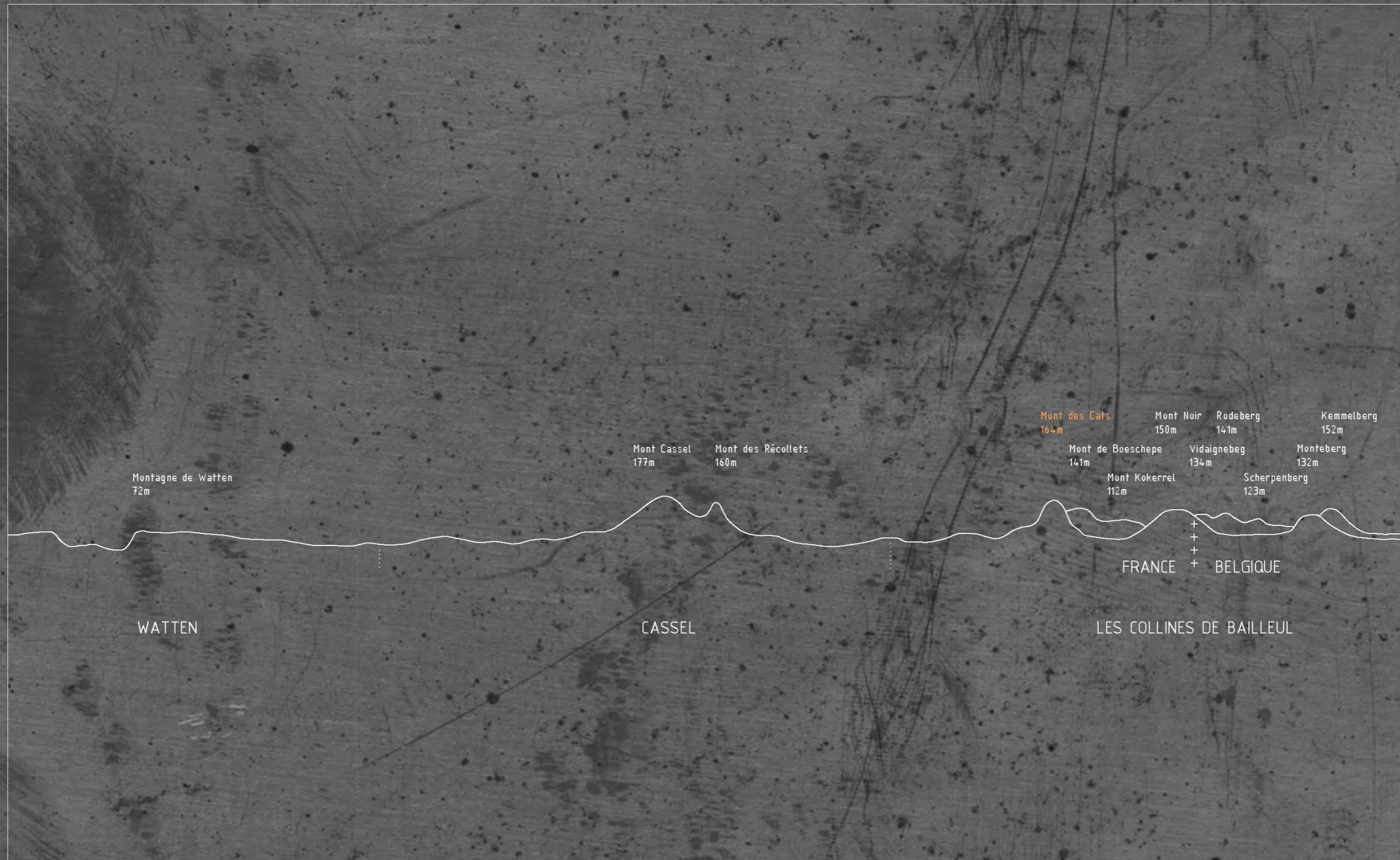
# LA CHAÎNE DES MONTS DE FLANDRE

Un lien naturel entre la France et la Belgique



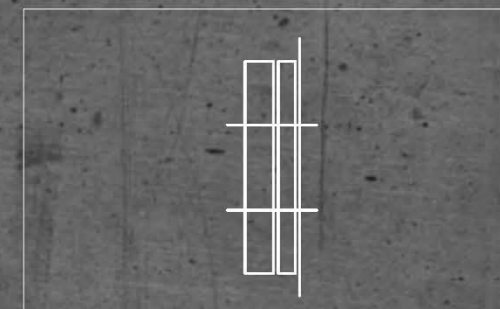
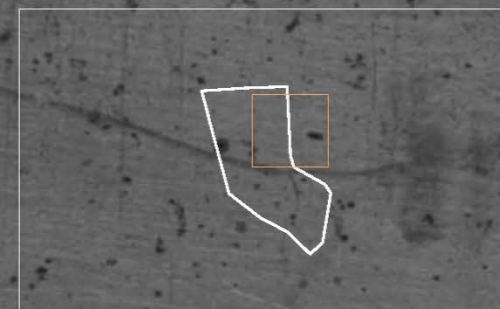
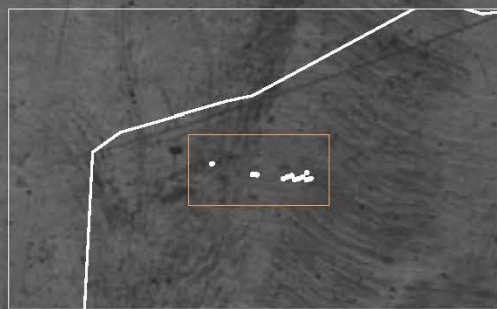
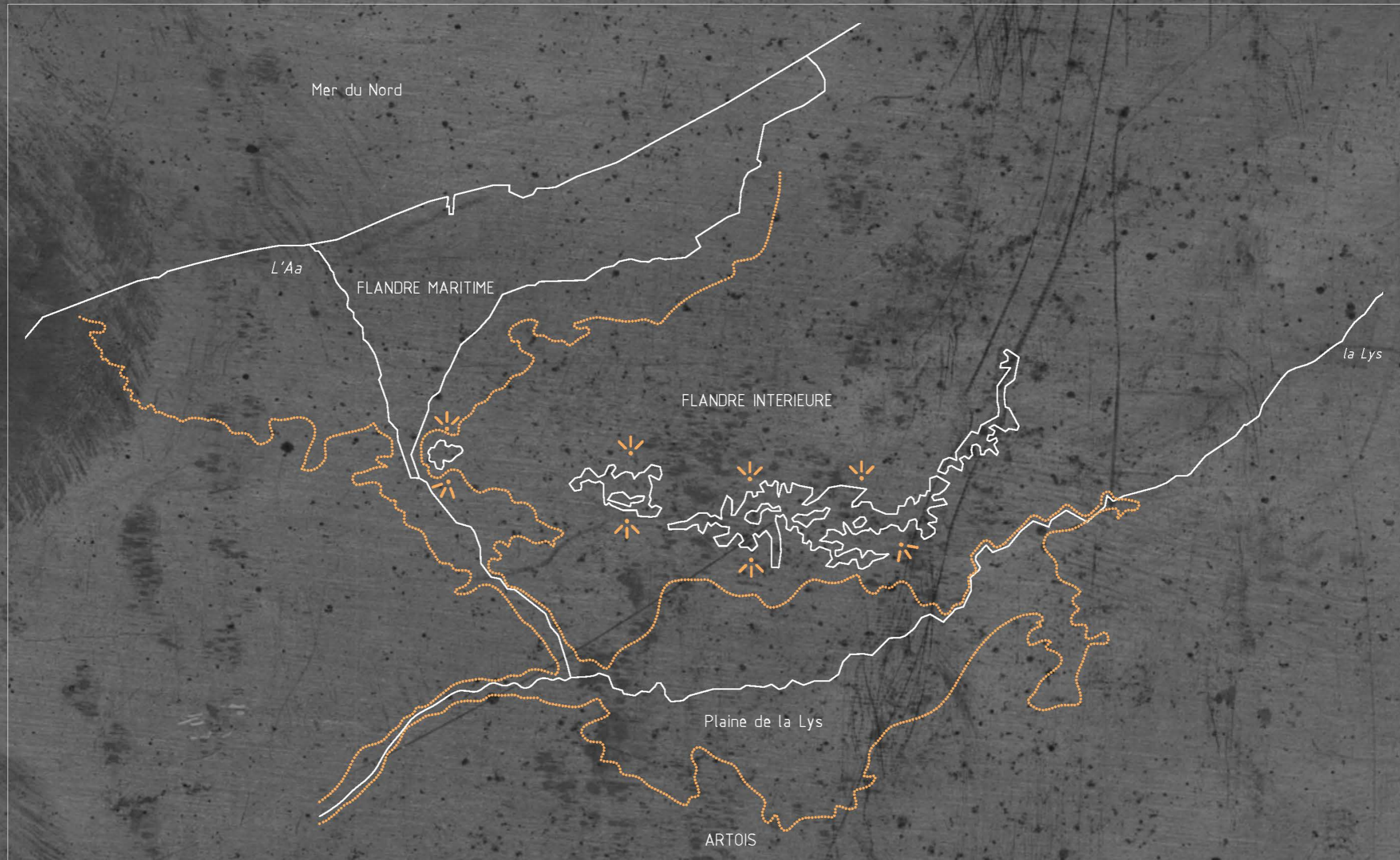
# LA CHAINE DES MONTS DE FLANDRE

Un lien naturel entre la France et la Belgique



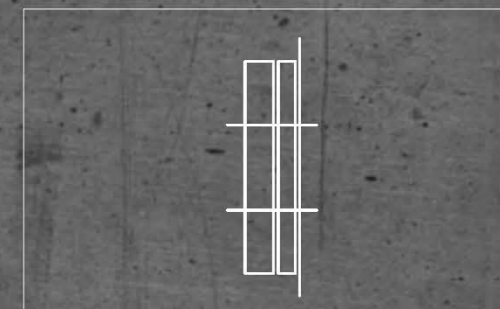
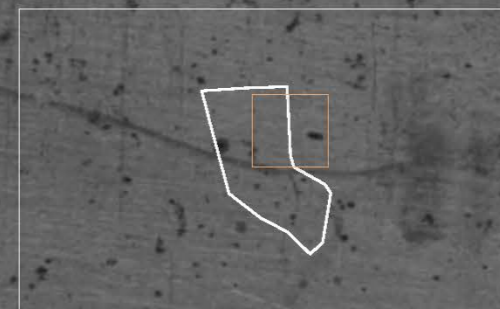
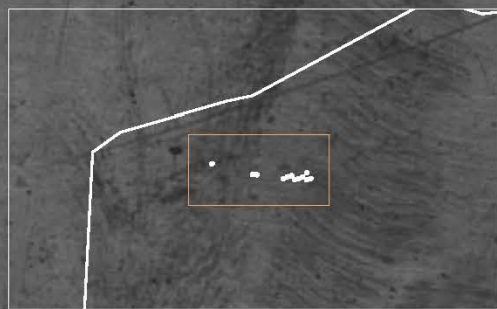
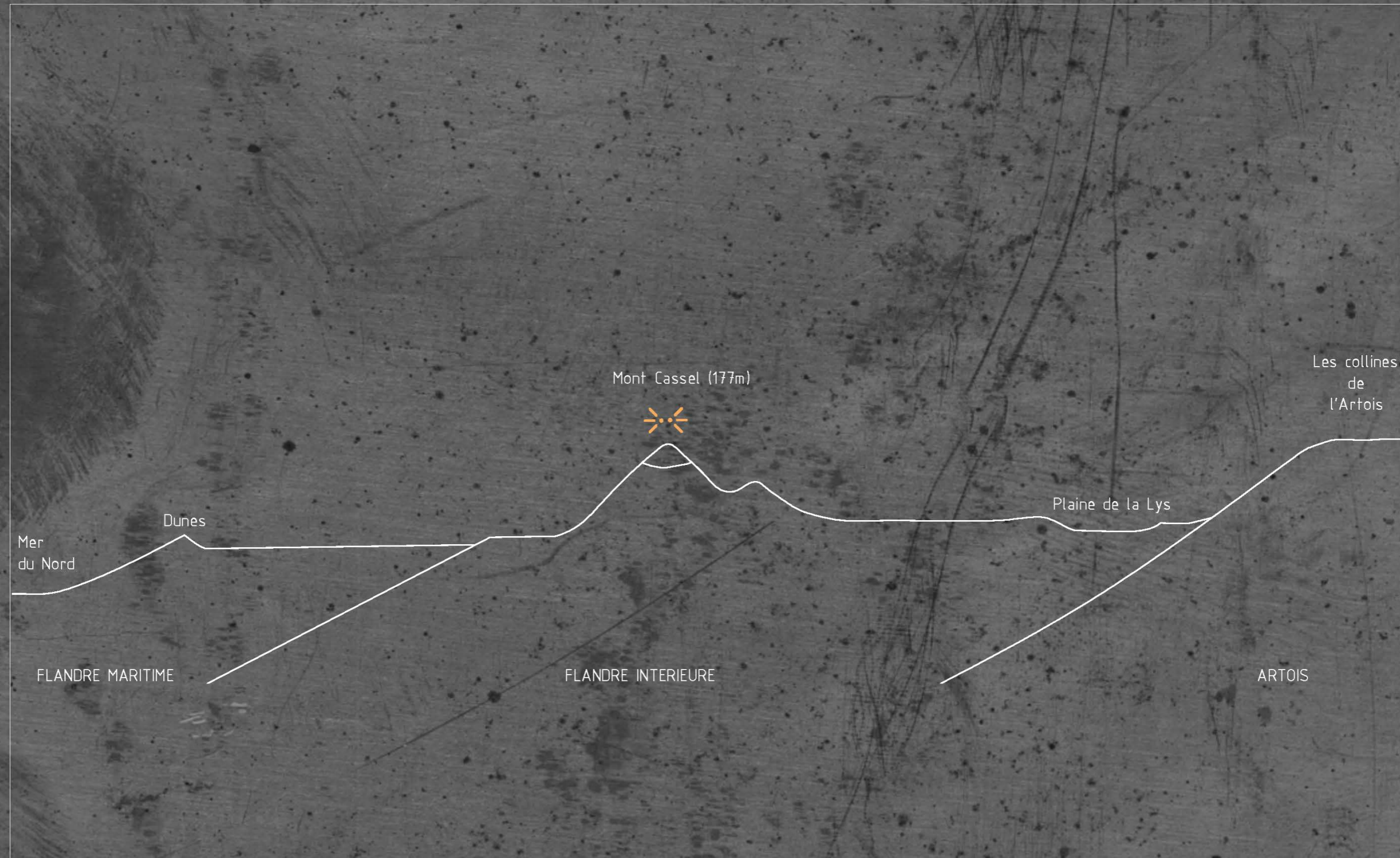
# LES BELVEDERES DU PLAT-PAYS

Au milieu des deux plaines du Nord



# LES BELVEDERES DU PLAT-PAYS

Au milieu des deux plaines du Nord



# LES BELVEDERES DU PLAT-PAYS

Au milieu des deux plaines du Nord

L'église Saint Gilles à Watten

Viaduc de la Haute-Colme


Mer du Nord (20km)

Centrale nucléaire de Gravelines (20km)

Port de Dunkerque (25km)



AU NORD LA FLANDRE MARITIME

Montagne de Watten 



Voie romaine « De Cassel à la Lys »

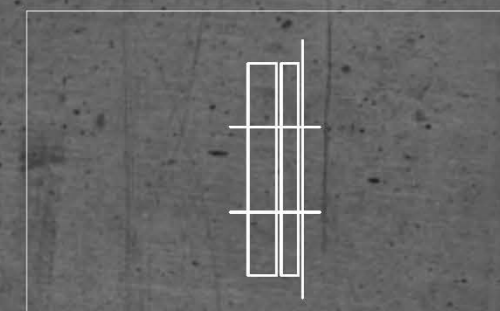
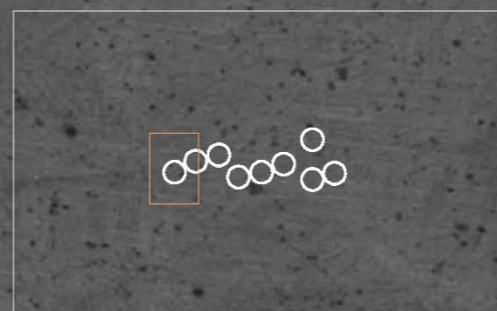
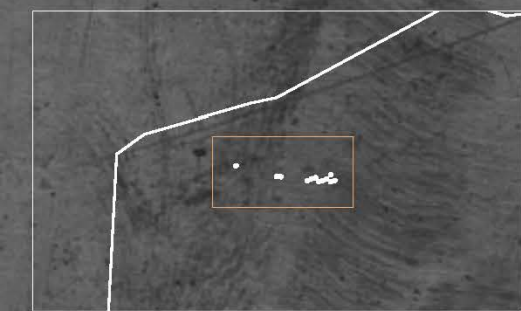
Voie romaine « De Cassel à Tervanna »

Les collines de l'Artois



AU SUD LA PLAINE DE LA YS

Mont Cassel 

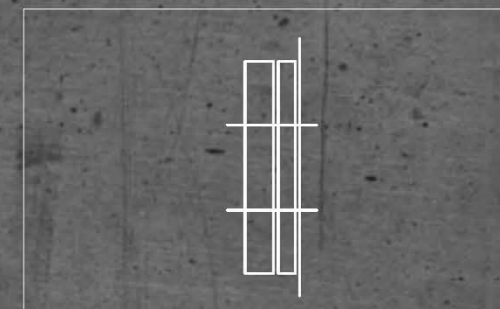
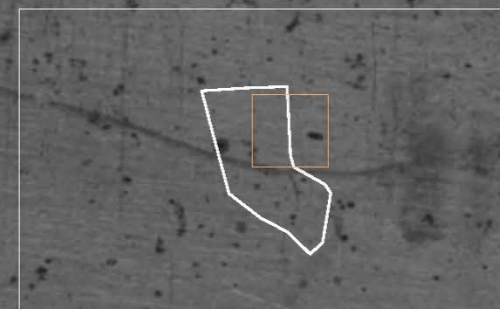
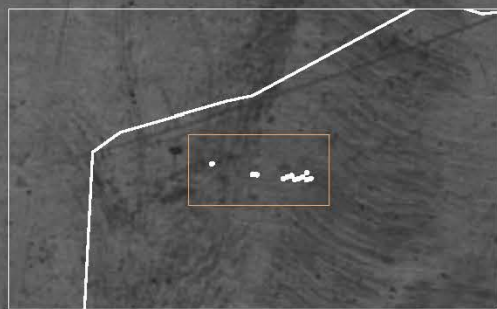


# LES BELVEDERES DU PLAT-PAYS

La vue au sommet

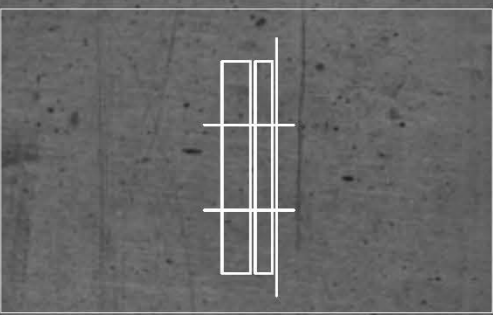
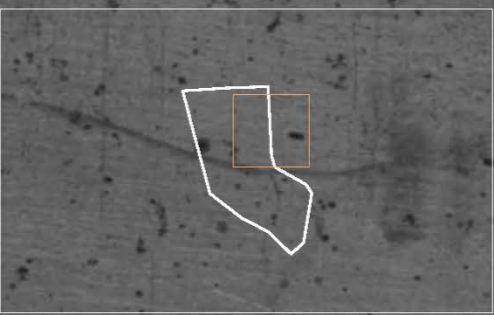
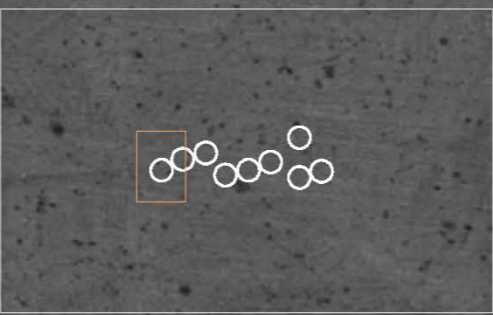
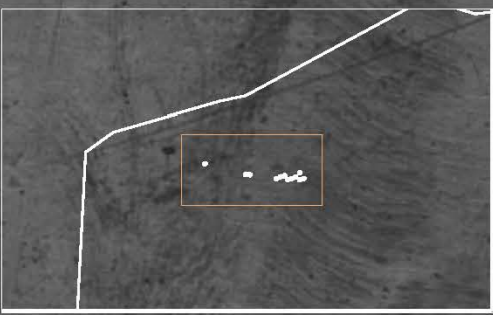


Montagne de Watten



# LES BELVEDERES DU PLAT-PAYS

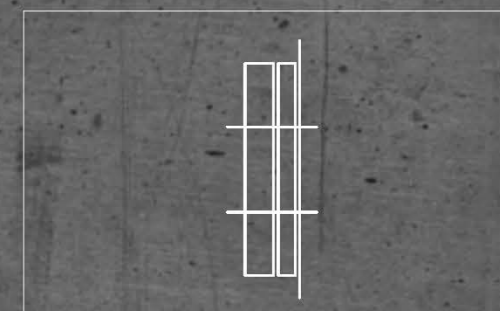
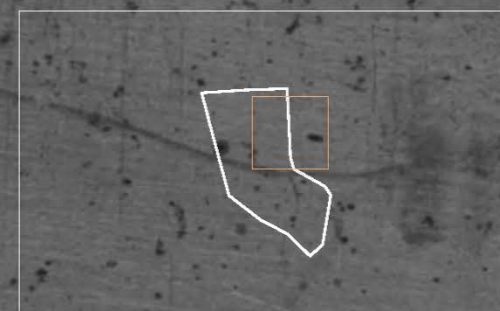
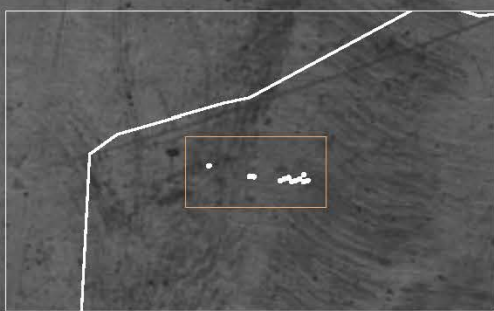
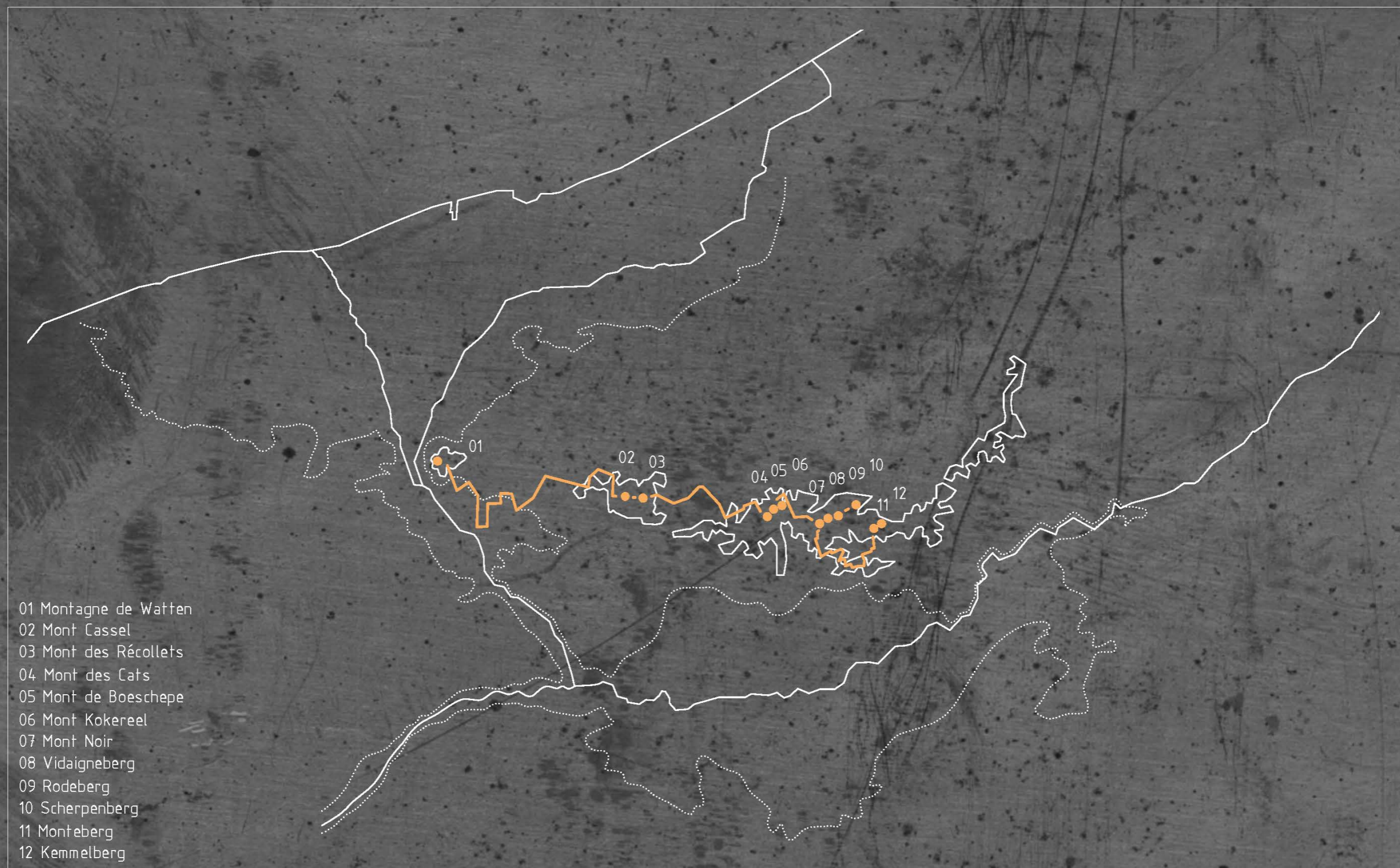
Les chemins d'interprétations et bornes du paysage





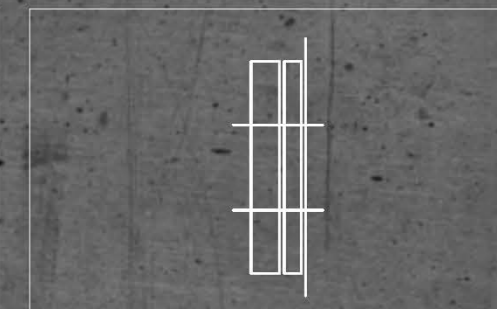
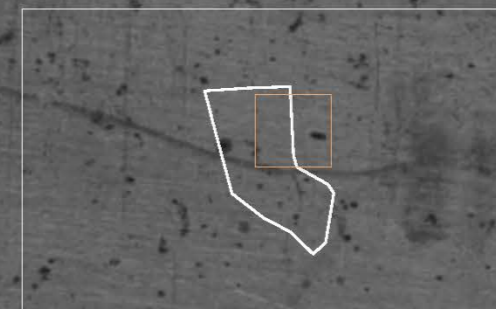
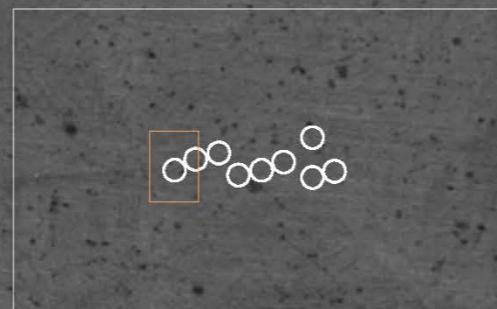
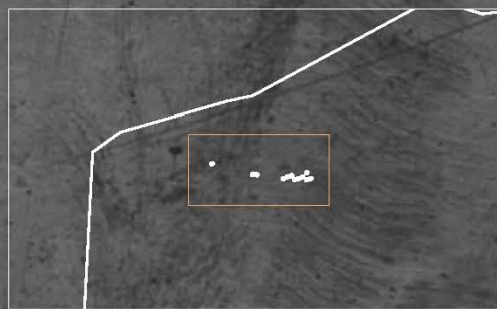
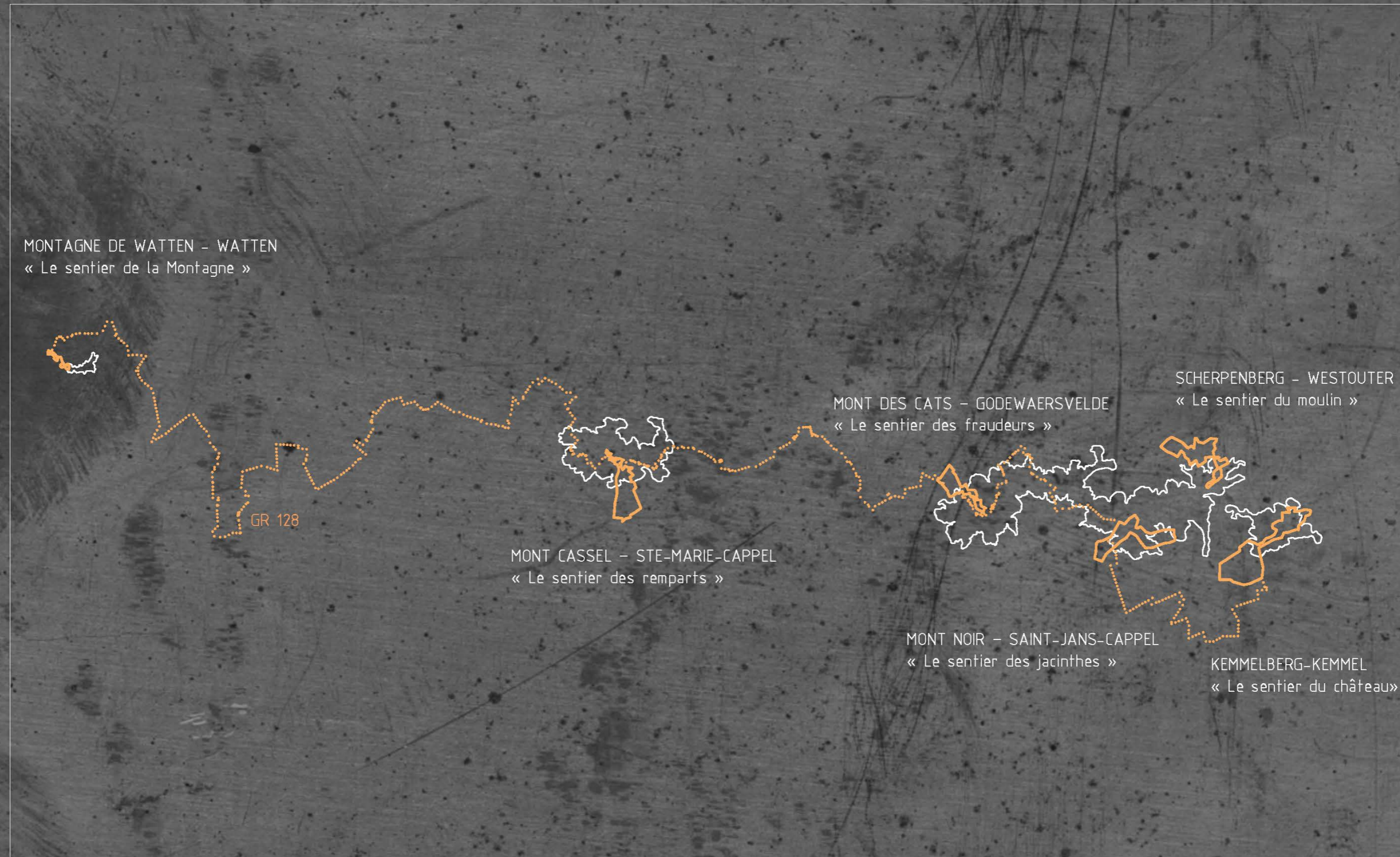
# « VLAMHEUVELLS-ROUTE »

Un nouveau parcours en 12 étapes pour voir les paysages du Nord



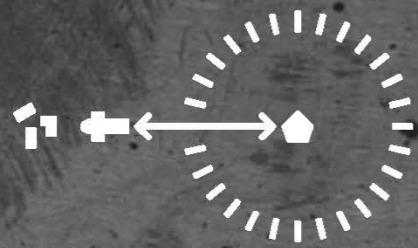
# LES CHEMINS D'INTERPRETATIONS

Les parcours ville-mont

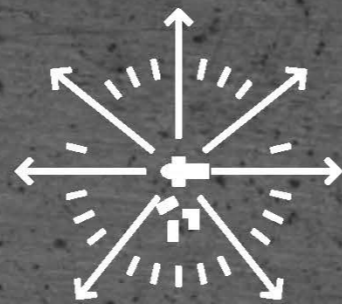


# LES CHEMINS D'INTERPRETATIONS

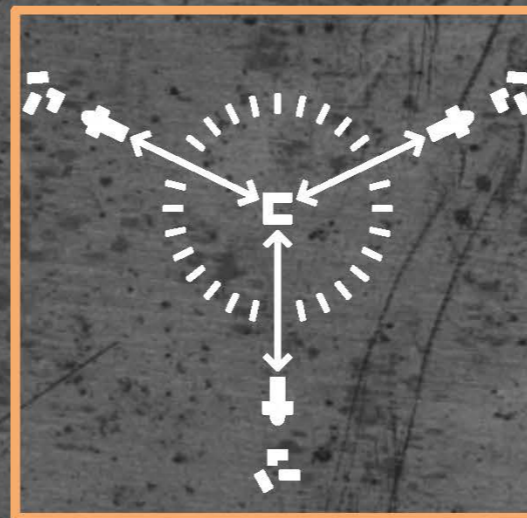
Les rapports ville-mont



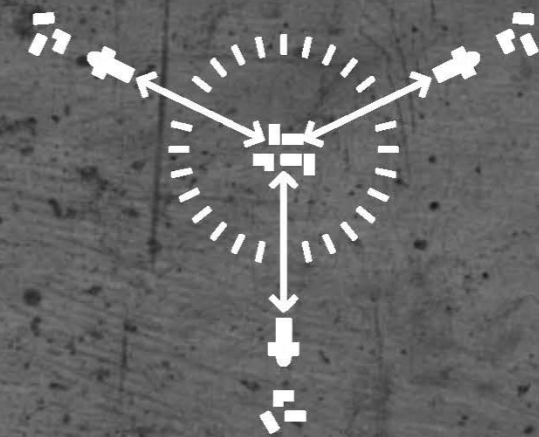
FORT DE WATTEN  
-  
VILLE DE WATTEN



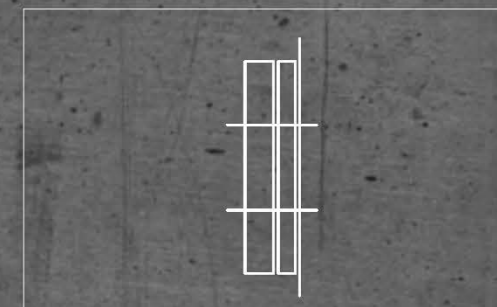
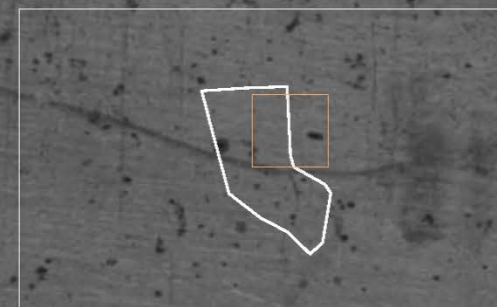
VILLE DE CASSEL  
-  
CAMPAGNE ET VOIES ROMAINES



ABBAYE DU MONT DES CATS  
-  
VILLAGES

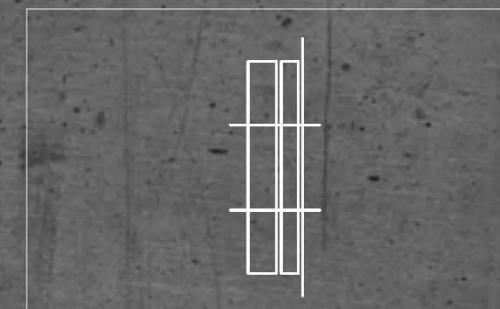
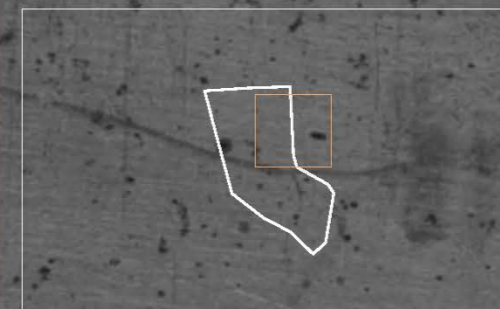
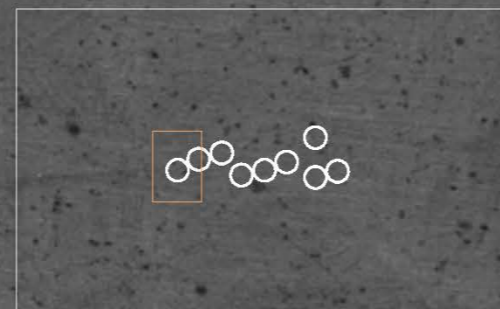
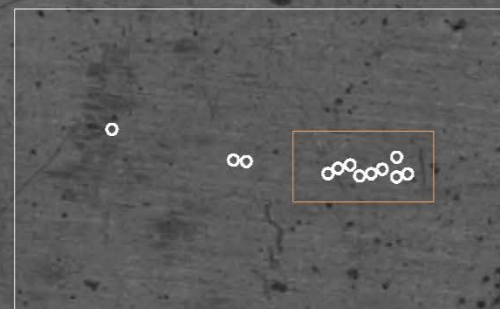
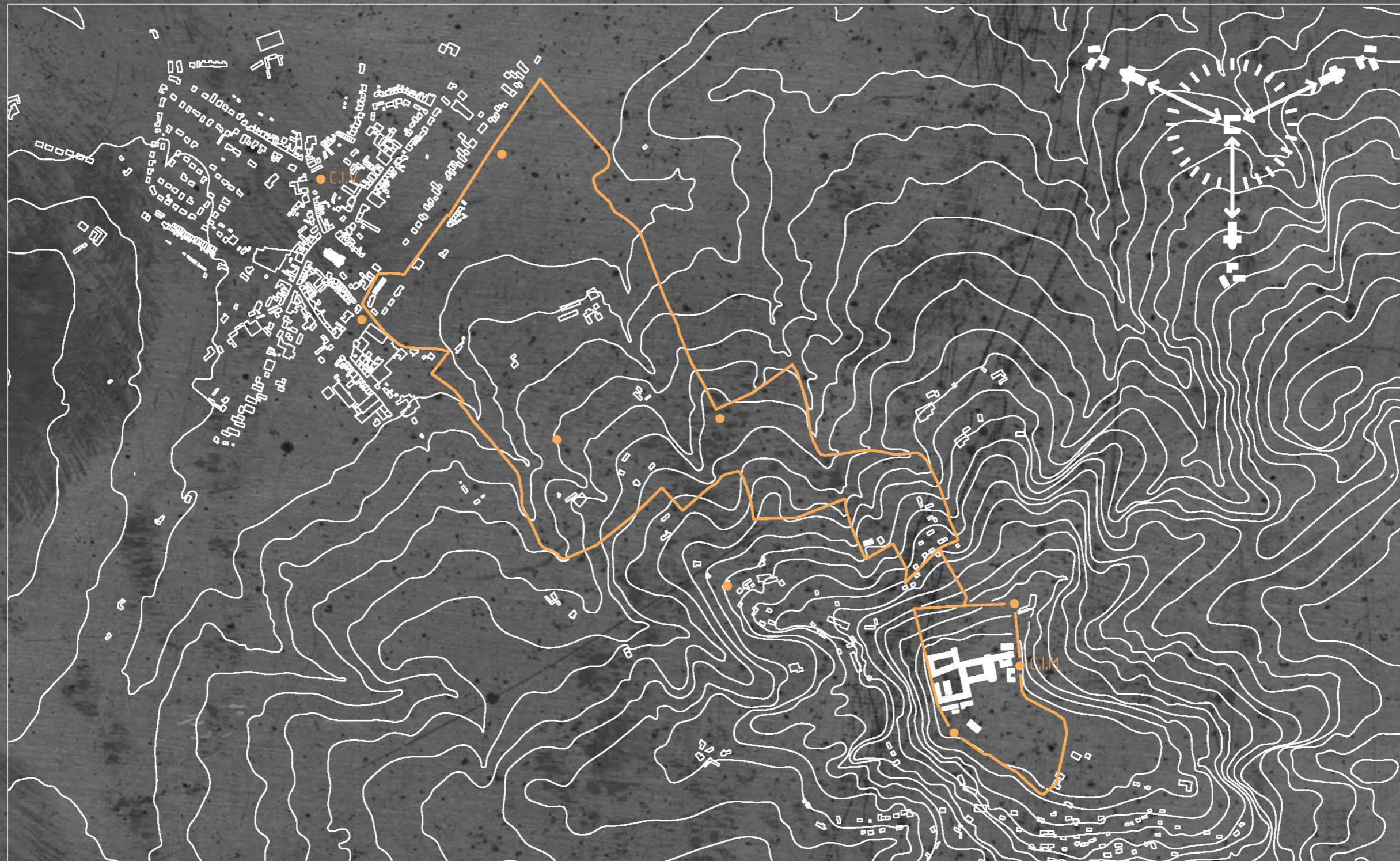


RUE COMMERCIALE DES MONTS BELGES  
-  
VILLAGES



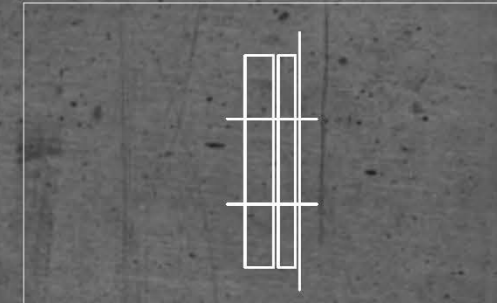
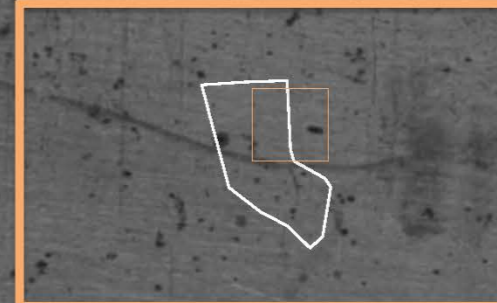
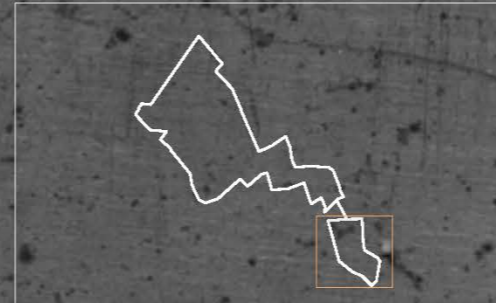
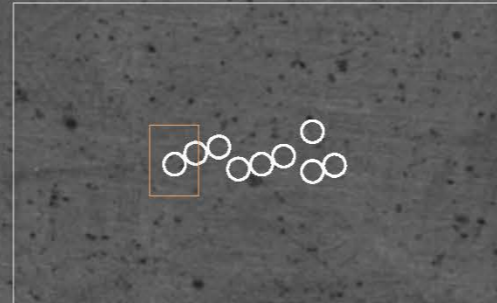
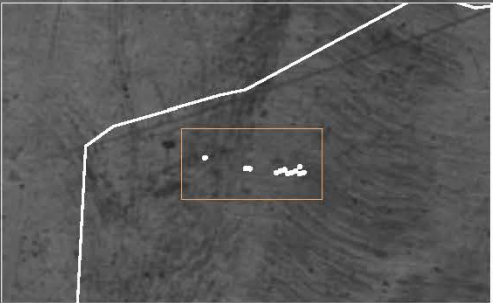
# LE CHEMIN D'INTERPRETATION DU MONT DES CATS

L'itinéraire piéton pour « ressentir »



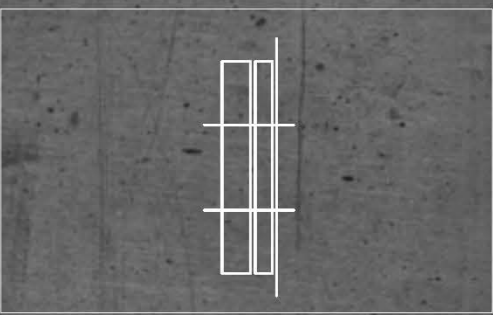
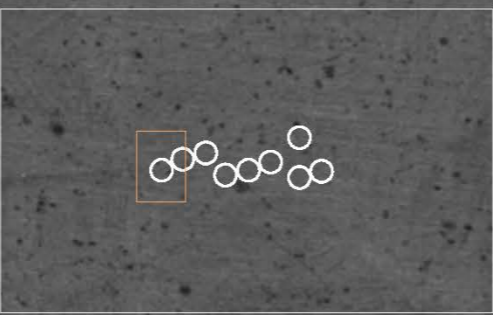
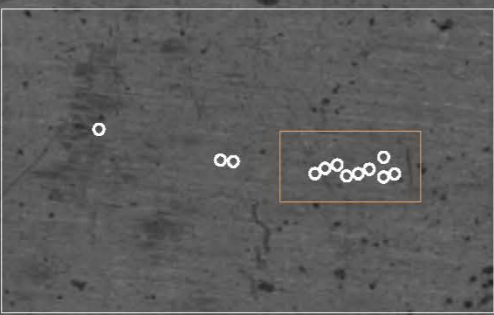
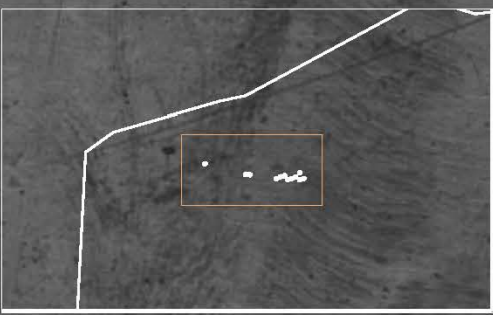
# LA SEQUENCE DU MONASTERE

Autour des murs de l'Abbaye du Mont des Cats



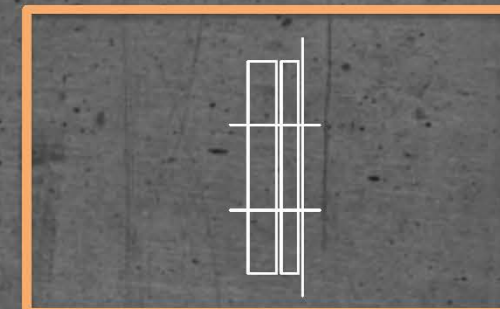
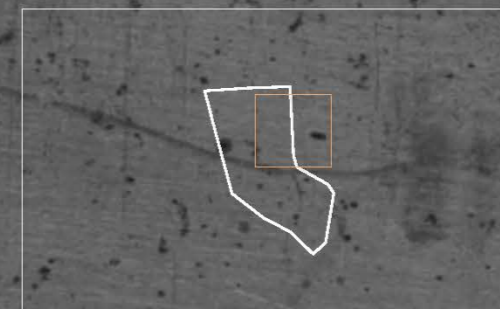
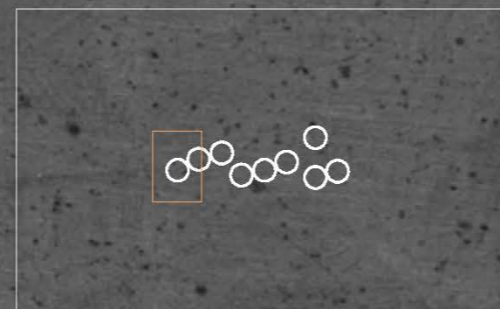
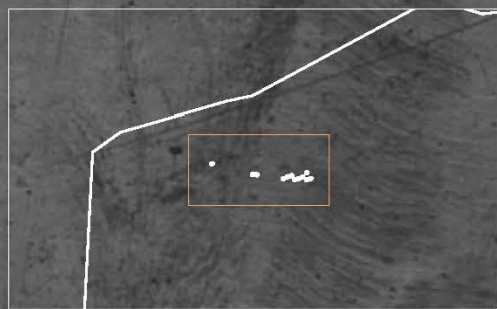
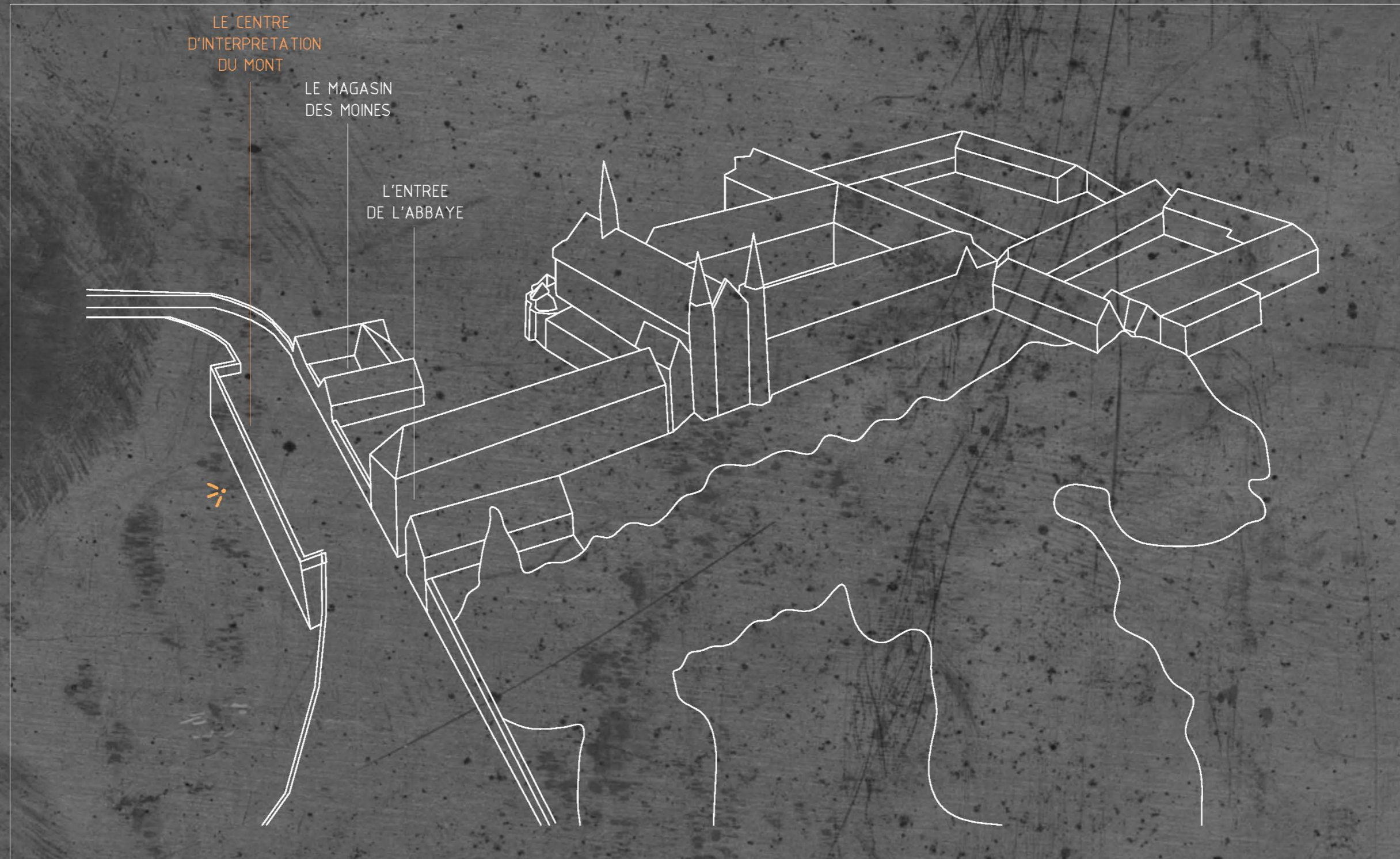
# LA SEQUENCE DU MONASTERE

Autour des murs de l'Abbaye du Mont des Cats



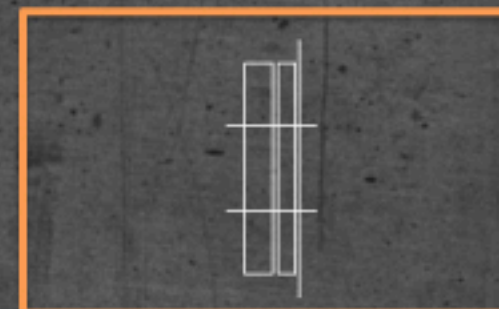
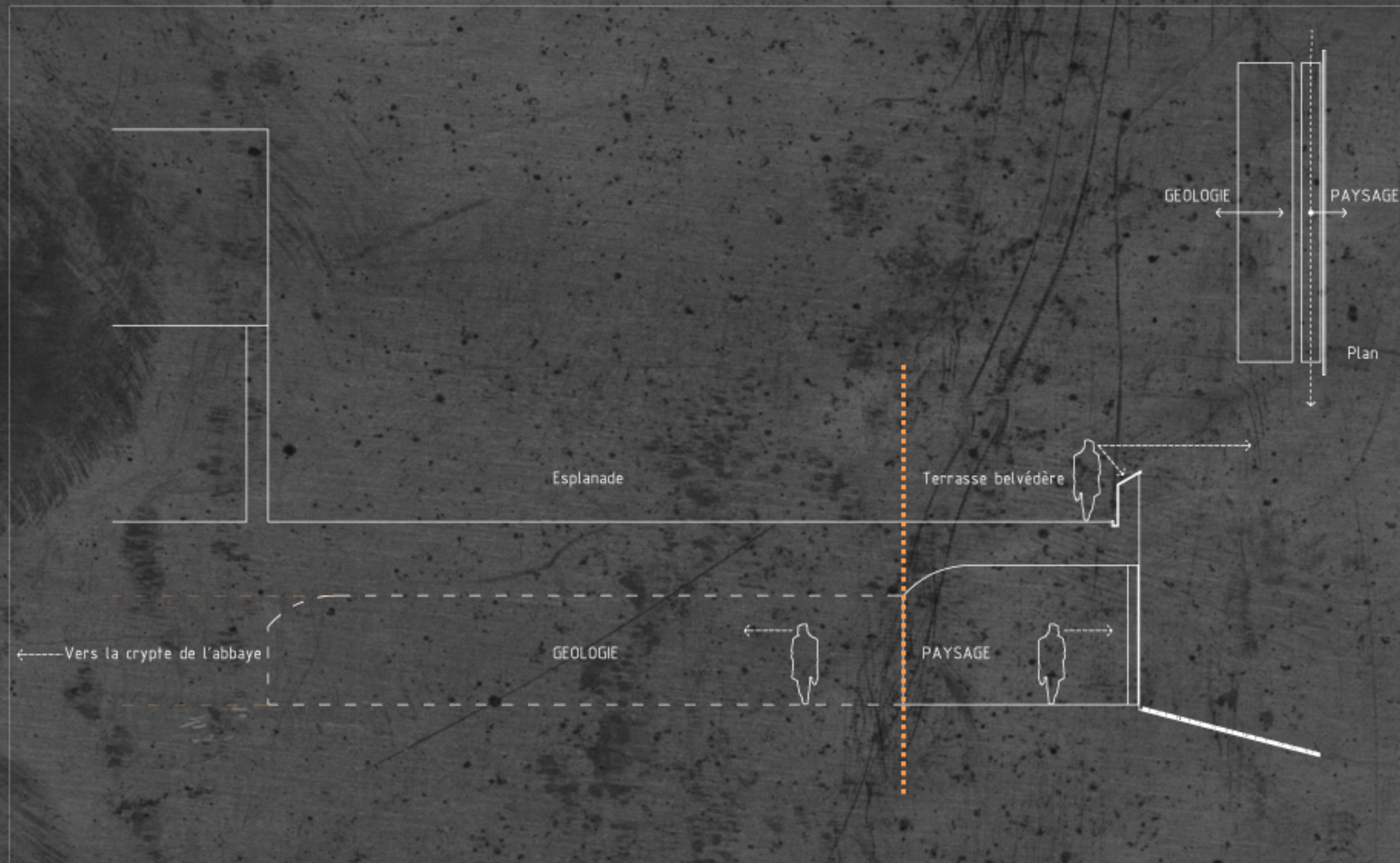
# LE CENTRE D'INTERPRETATION DU MONT

Devant l'abbaye face au paysage



# LE CENTRE D'INTERPRETATION DU MONT

Cheminer à l'intérieur du centre d'interprétation

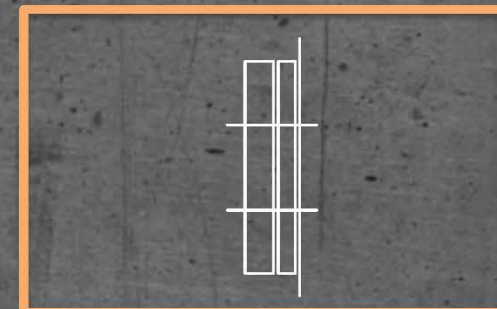
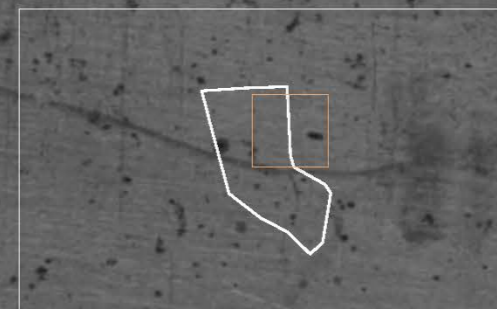
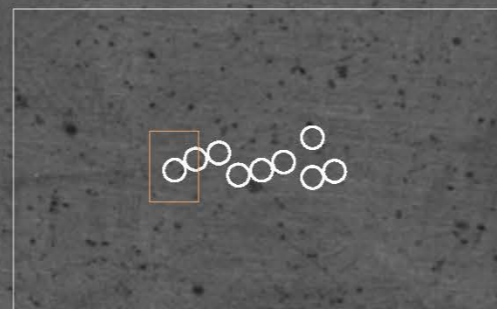
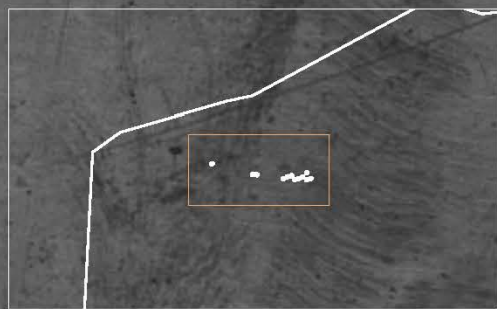
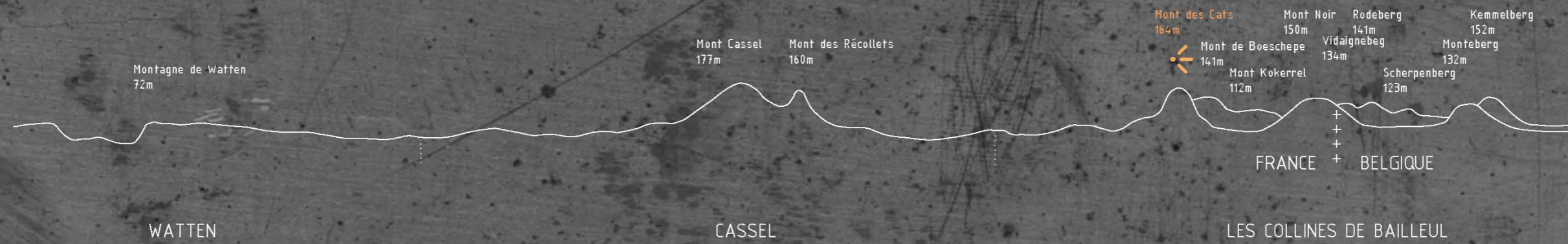




# LE CENTRE D'INTERPRETATION DU MONT

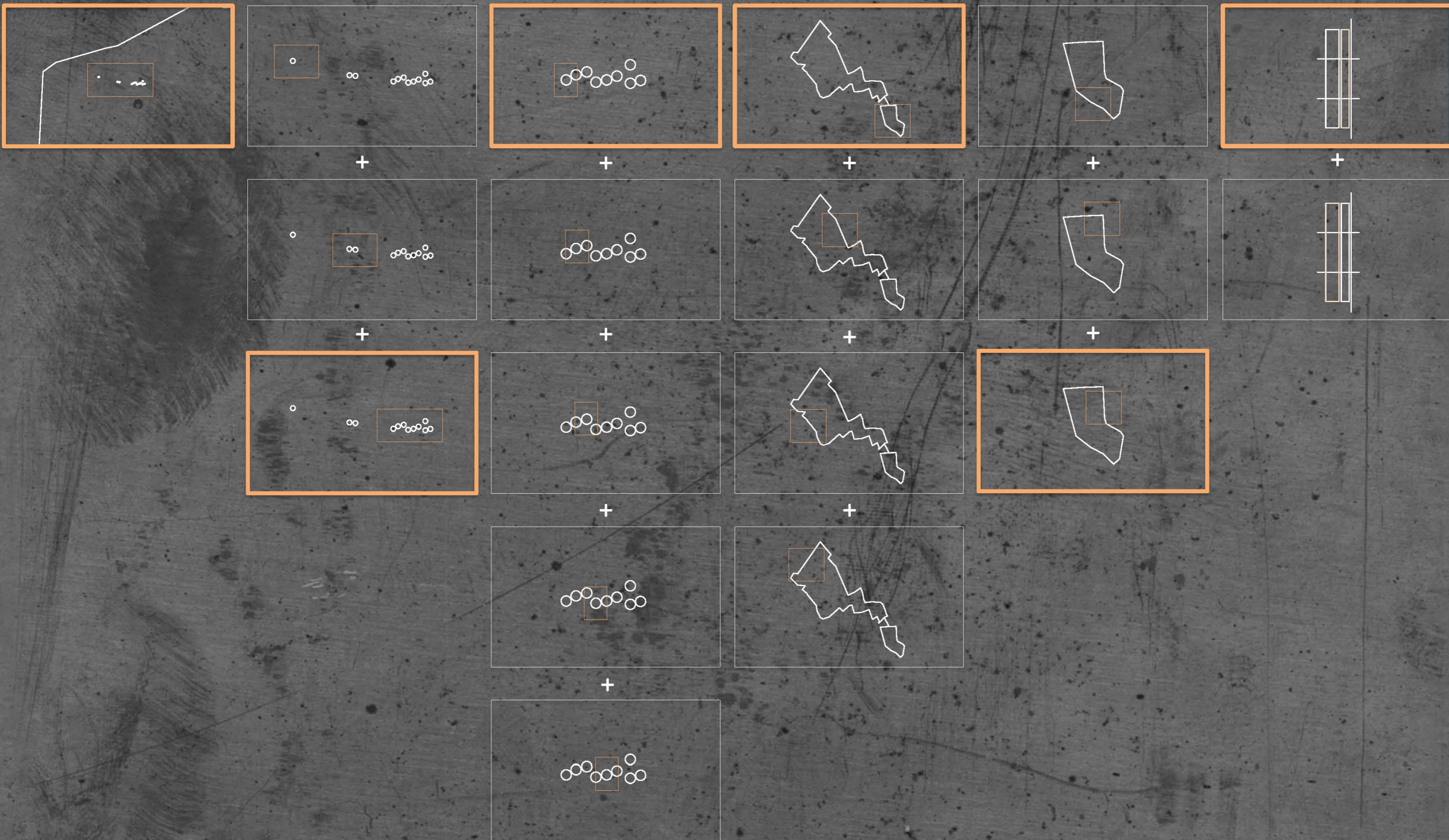
La séquence paysage

Mont de Boeschepe 141m  
Ypres 17km  
Mont Kokereel 112m  
Scherpenberg 123m  
Rodeberg 141m  
Vidaigneberg 134m  
Kemmelberg 152m  
Monteberg 132m  
Mont Noir 150m



# UNE LOGIQUE D'ANALYSE DU TERRITOIRE

De l'ensemble cohérent à l'échantillon spécifique





Etudiant: Clément Terrier  
Promoteur: Quentin Wilbaux  
Lecteur: Vincent Bassez

UCL LOCI site de Tournai 2012

